

INDEXED AM  
 FOLLOW UP \_\_\_\_\_  
 PROOFED \_\_\_\_\_  
 SCARFED \_\_\_\_\_

Instrument #: 2015-2383  
 11/16/2015 03:34:47 PM Total Pages: 1  
 PLC PLAT CORNER CER  
 Recording Fee: \$0.00 Transfer Tax: \$0  
 Denise Meeves, Recorder, Crawford County Iowa



PREPARED BY: PAUL ASSMAN-CRAWFORD COUNTY ENGINEER'S OFFICE-COURTHOUSE-DENISON, IA.-712-263-2449

## UNITED STATES PUBLIC LAND SURVEY CORNER CERTIFICATE OF

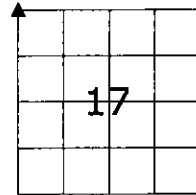
LAND SURVEY MONUMENT SITUATED IN HANOVER TOWNSHIP, THE NORTHWEST CORNER OF SECTION 17,  
T-84N, R-40W OF THE FIFTH P.M. CRAWFORD COUNTY, IOWA.

PREVIOUSLY RECORDED AS NO. 2015-2322 \*RE-RECORDED DUE TO CORRECTION OF LOCATION ON SECTION GRID

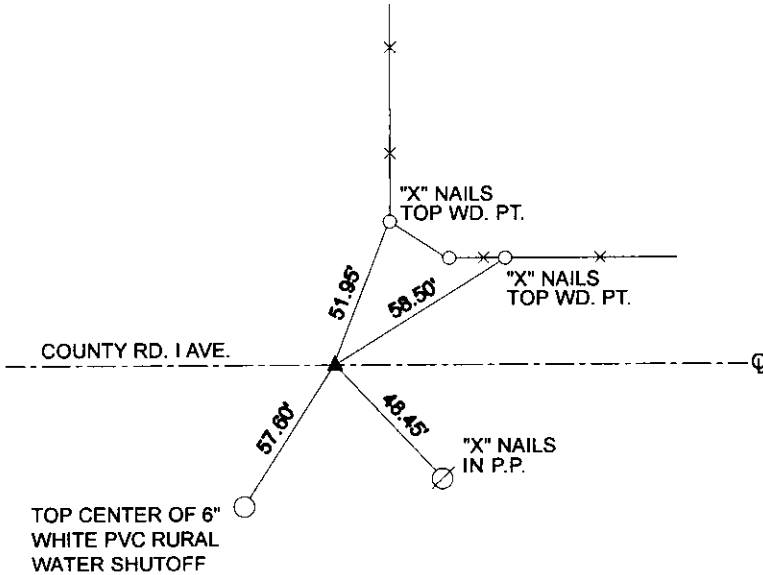
### MONUMENT DESCRIPTION AND REMARKS

NORTHWEST CORNER SEC. 17-84-40

FOUND 1/2" X 16" STEEL PIN AND LATH 5" LONG PAINTED ON ONE END 20" DEEP. COUNTY GRADED ROAD. SET 5/8" REBAR WITH RED CAP #11982 7.0" DEEP AND RETIED CORNER.



NORTHWEST CORNER SEC. 17-84-40



ALL DISTANCES ARE SLOPE CHAINED

**CERTIFICATION:**

I HEREBY CERTIFY THAT THIS LAND SURVEYING DOCUMENT WAS PREPARED AND THE RELATED SURVEY WORK WAS PERFORMED BY ME OR UNDER MY DIRECT PERSONAL SUPERVISION AND THAT I AM A DULY LICENSED LAND SURVEYOR UNDER THE LAWS OF THE STATE OF IOWA.

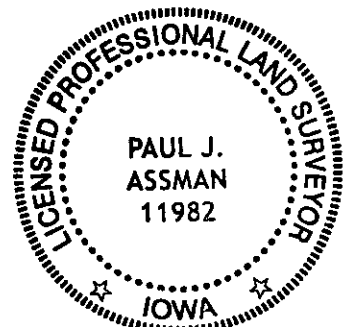
Signature

Date of Survey

PAUL J. ASSMAN  
Typed Name

11982  
L.S. No.

12-31-16  
License Renewal Date



Pages covered by this seal 1