

96 NOV 26 AM 9:50

INST. NO. 96-3232  
DENISE HEEVES, RECORDER  
*Denise Heeves*  
FEE: 6.00

PRINTED  
 FOLLOW UP  
 JMS

This document prepared by: Semke & Associates - 712-792-2276  
Michael G. Semke, L.S.#10318 - 608 N. Court St., Carroll, Iowa

UNITED STATES PUBLIC LAND SURVEY CORNER CERTIFICATE  
OF

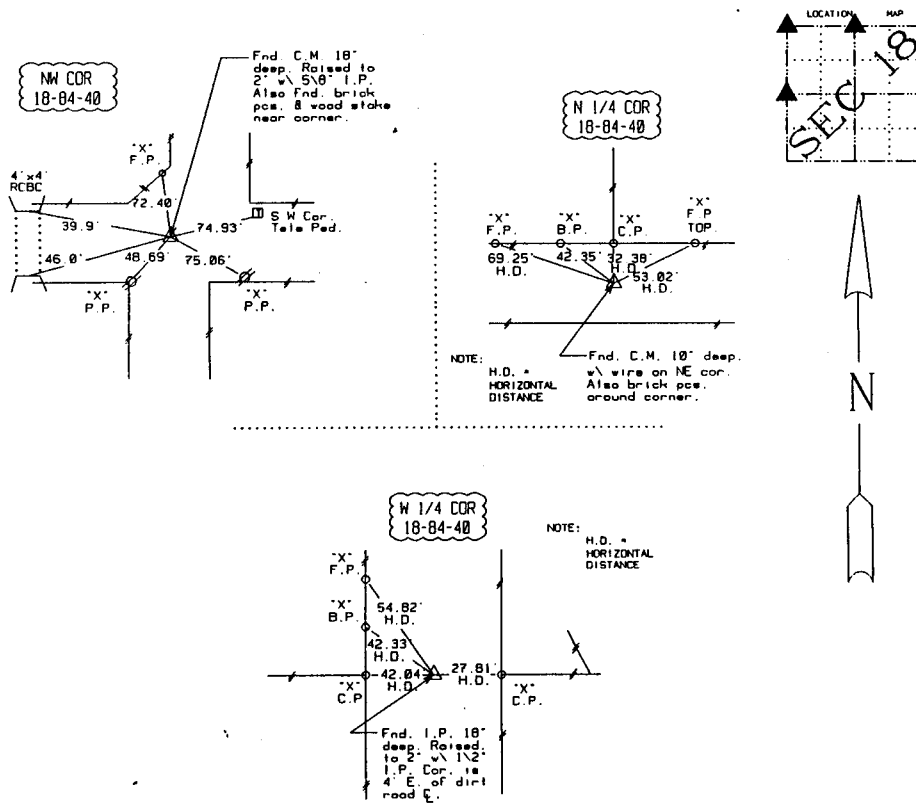
Land Survey Monuments situated in Section 18, Township 84, Range 40, of the Fifth Principal Meridian, Crawford County, Iowa. Previously recorded in \_\_\_\_\_ in County Recorder's Office.

(book, page, document number, etc.)

(Show reason for preparing this certificate, the evidence and detailed procedures used in establishing the corner positions and monumentation found or placed.)

PLAN - VIEW

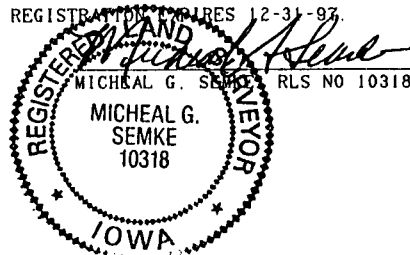
(Show a minimum of three reference ties to durable physical objects, relevant monuments and physical conditions that will enable recovery of the corner.)



Note: All ties slope chained unless noted.

I HEREBY CERTIFY THAT THIS CORNER CERTIFICATE WAS PREPARED BY ME OR UNDER MY DIRECT PERSONAL SUPERVISION AND THAT I AM A DULY REGISTERED LAND SURVEYOR UNDER THE LAWS OF THE STATE OF IOWA. MY REGISTRATION EXPIRES 12-31-97.

8-20-96  
DATE MICHAEL G. SEMKE RLS NO 10318



List Corners to be Indexed

Corners	Section	Twp	Range
NW COR	18	84	40
SW COR	7	84	40
NE COR	13	84	41
SE COR	12	84	41
N 1/4	18	84	40
S 1/4	7	84	40
W 1/4	18	84	40
E 1/4	13	84	41