

Crawford County Recorder Denise Meeves  
 Fee Book 2007-1836 REC015063  
 07/05/2007 @1138AM # Pages 1  
 PLC PLAT CORNER CER  
 Total Fees: \$7.00

RECORD  
 FILED  
 JUL 11 2007  
 PANAMA, IOWA  
 DEAN A. WILKE

WILKE LAND SURVEYING 401 1800th Street Panama, Iowa 51562 (712)489-2898

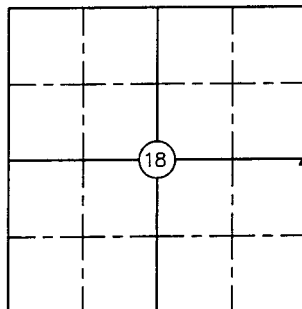
## UNITED STATES PUBLIC LAND SURVEY CORNER CERTIFICATE

SECTION 18 TOWNSHIP 84N RANGE 40W COUNTY CRAWFORD

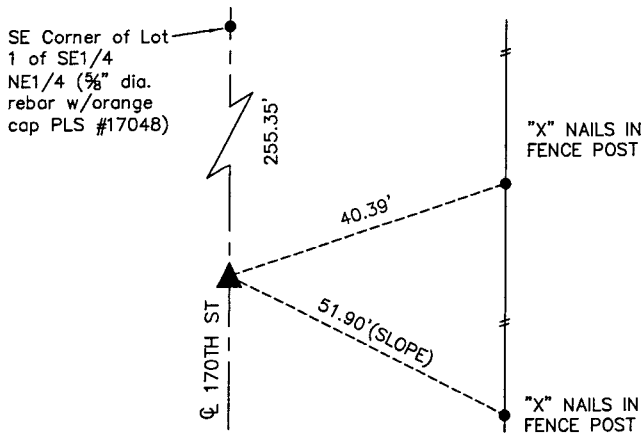
Certificate Prepared For: Survey of Lot 1 of the SE1/4 NE1/4

Monument Description and Remarks:

The field books at the County Engineer's Office note that the Corner was dug for in 1940 with nothing found and nothing was set at this corner. Used metal detector and found nothing. Set 5/8" dia. by 24" rebar (0.4' deep) in the center of road at equal distances from the SE Corner & NE Corner of Section 18. No fences exist perpendicular to the county road.



	<p>I hereby certify that this land surveying document was prepared and the related survey work was performed by me or under my direct personal supervision and that I am a duly licensed Land Surveyor under the laws of the State of Iowa.</p> <p style="text-align: center;"> <i>Dean A. Wilke</i> 7/6/07              Dean A. Wilke Date           </p> <p>License number 17048</p> <p>My license renewal date is December 31, 2007</p> <p>Pages or sheets covered by this seal: <u>This page only</u></p>
--	---



All Distances Horizontal Unless Noted as (Slope)

SET 5/8" DIA. BY 24" REBAR W/ORANGE CAP  
 PLS #17048 (0.4' DEEP)

List Corners to be Indexed			
Corner	Section	Twp.	Range
E1/4 Corner	18	84N	40W