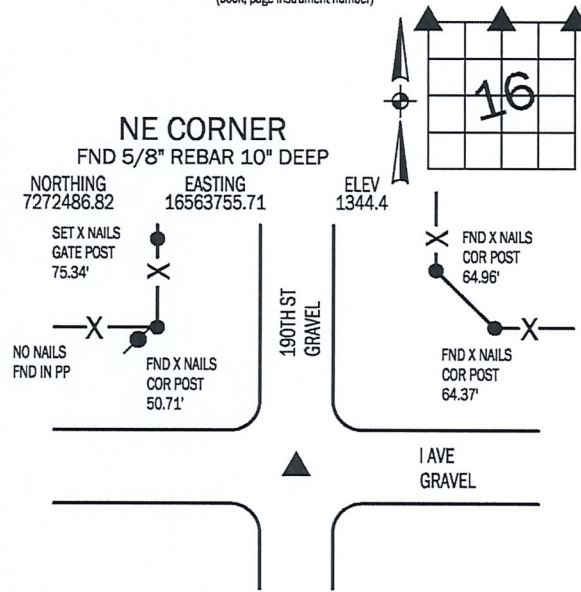
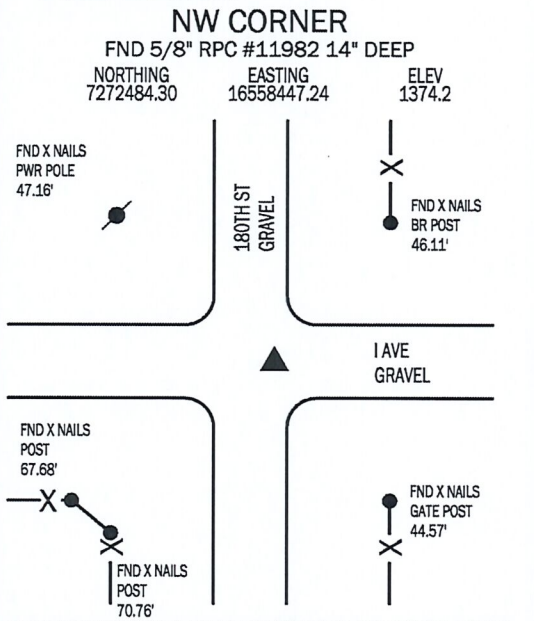


Denise Meeves RECORDER
 Crawford County, Iowa
 Instr. Number: 2019-1757
 Recorded: 9/26/2019 at 3:49:56.0 PM
 Pages 1
 County Recording Fee: \$7.00
 Iowa E-Filing Fee: \$3.13
 Combined Fee: \$10.13
 Revenue Tax:

PREPARED BY AND RETURN TO: MIKE SCHULTE, SCHULTE SURVEYING, INC., 2003 390TH STREET, WESTSIDE, IA 51467 (712) 790-3489

UNITED STATES PUBLIC LAND SURVEY CORNER CERTIFICATE OF

LAND SURVEY MONUMENTS SITUATED IN SECTION 16, TOWNSHIP 84 NORTH, RANGE 40 WEST, OF THE FIFTH PRINCIPAL MERIDIAN, CRAWFORD COUNTY, IOWA. PREVIOUSLY RECORDED IN SEE BELOW IN COUNTY RECORDER'S OFFICE.
(book, page instrument number)

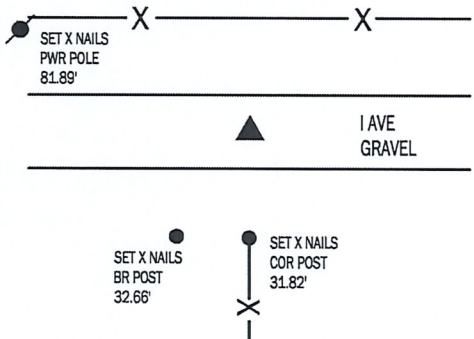


USED TIES RECORDED IN INST 2015-0355 TO FIND 5/8" RED PIN CAP #11982 14" DEEP. NOTE THE TIES FIT WELL AND ALL REFERENCE MONUMENTS ARE THERE, THE ONLY REASON THIS TIE IS BEING FILED IS TO INFORM OTHERS, THAT THE MONUMENT DID NOT HAVE A STRONG MAGNETIC SIGNAL. IN FACT, I COULDN'T GET A MAGNETIC READING UNTIL I WAS 8" DEEP. I DIDN'T HAVE ANY SHORT REBAR TO BRING IT TO THE SURFACE SO THE MONUMENT IS LEFT AS PREVIOUSLY EXPLAINED.

USED TIES RECORDED IN INST 99-1398 TO FIND A 5/8" REBAR 10" DEEP. SOME OF THE TIES HAVE BEEN REMOVED OR WERE NOT FOUND SO THIS CERTIFICATE WAS MADE.

NORTH 1/4 CORNER
 SET 5/8" REBAR YPC #17979 4" DEEP
 NORTHING 7272485.56 EASTING 16561101.48

NO RECORDED TIES FOUND. ENGINEER'S RECORD'S INDICATE A LARGE HOLE WAS DUG IN LINE WITH FENCE SOUTH AND NOTHING WAS FOUND, (1999). IN 1960 A WOOD HUB WAS SET IN LINE WITH FENCE SOUTH. REVIEWED TIES BUT FOUND THE FENCES ARE WIDER NOW. LOCATION SEEMS AS THOUGH THERE IS A LOT OF FILL, DID NOT FIND THE WOOD HUB. USED NE AND NW CORNERS TO CALCULATE LOCATION BY SINGLE PROPORTION. LOCATION FITS ROAD AND FENCE SOUTH WELL, ACCEPTED CALCULATED POSITION AND SET 5/8" REBAR WITH YPC #17979 4" DEEP.



*All distances are measured horizontally unless noted.

I HEREBY CERTIFY THAT THIS LAND SURVEYING DOCUMENT WAS PREPARED BY ME OR UNDER MY DIRECT PERSONAL SUPERVISION AND THAT I AM A DULY LICENSED PROFESSIONAL LAND SURVEYOR UNDER THE LAWS OF THE STATE OF IOWA.

Mike Schulte
 MIKE SCHULTE 2019/09/26 DATE
 LICENSE NUMBER: 17979
 LICENSE RENEWAL DATE IS DECEMBER 31, 2019
 PAGES COVERED BY THIS SEAL: 1 OF 1



LIST CORNERS TO BE INDEXED

CORNER	SECTION	TWP	RANGE
NW COR	16	84	40
NE COR	17	84	40
SE COR	8	84	40
SW COR	9	84	40
N1/4 COR	16	84	40
S1/4 COR	9	84	40
NE COR	16	84	40
NW COR	15	84	40
SE COR	9	84	40
SW COR	10	84	40

BASIS OF BEARING

laRCS ZONE 6 - US SURVEY FEET
 laRTN DERIVED - NAD83(2011)(EPOCH 2010.00)

SCHULTE SURVEYING, INC.

DRAWN BY: MLS
 PROJ NUMBER: 19-048