

INDEXED 3/2  
 FOLLOW UP \_\_\_\_\_  
 PROOFED \_\_\_\_\_  
 SCANNED \_\_\_\_\_

Instrument #: 2017-1737  
 09/01/2017 10:19:42 AM Total Pages: 1  
 PLC PLAT CORNER CER  
 Recording Fee: \$7.00 Transfer Tax: \$0  
 Denise Meeves, Recorder, Crawford County Iowa



PREPARED BY : DANIEL G. MESSERICH, 919 BROOKDALE DRIVE, CARROLL, IA 51401, 712-790-8513

# UNITED STATES PUBLIC LAND SURVEY CORNER CERTIFICATE

LAND SURVEY MONUMENT SITUATED IN SECTION 12  
 TOWNSHIP 84 NORTH, RANGE 40 WEST, OF THE 5TH P.M.  
 CRAWFORD COUNTY, IOWA  
 MONUMENT DESCRIPTION AND REMARKS:

**REASON FOR SECTION CORNER CERTIFICATE:**  
 \_\_\_ THERE IS NO CERTIFICATE FOR THE CORNER ON FILE WITH THE RECORDER OF COUNTY IN WHICH THE CORNER IS LOCATED.  
 \_\_\_ THE SURVEYOR IN RESPONSIBLE CHARGE OF THE LAND SURVEYING ACCEPTS A CORNER POSITION WHICH DIFFERS FROM THAT SHOWN IN THE PUBLIC RECORDS OF THE COUNTY IN WHICH THE CORNER IS LOCATED.  
 X THE CORNER MONUMENT IS REPLACED OR MODIFIED IN ANY WAY.  
 \_\_\_ THE REFERENCE TIES IN AN EXISTING PUBLIC RECORD ARE INCORRECT OR MISSING.  
 \_\_\_ OTHER

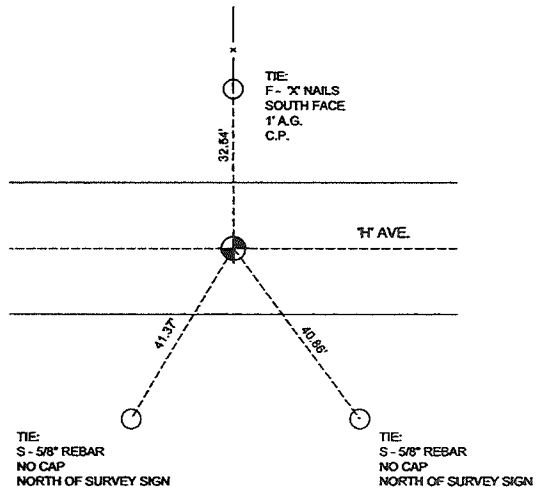
**DESCRIPTION OF MONUMENT:**  
 MATERIAL - 5/8" REBAR  
 CAP COLOR - RED  
 CAP NOTATION - 11982  
 DEPTH - 4 FEET DEEP  
 OTHER -

**EXTENT OF SEARCH:**  
 6' X 6' X 4' DEEP AREA IN CENTER OF ROAD AT INTERSECTION OF FOUND TIES.

DURING EXCAVATION A TELEPHONE LINE WAS DAMAGED 2 FEET DEEP. THE TRENCH WAS LEFT OPEN AND THE ROAD WAS CLOSED TO REPAIR THE TELEPHONE LINE. I DID NOT MAKE ANOTHER TRIP TO THE SITE TO RAISE THE CORNER TO A SHALLOWER DEPTH.

- LEGEND**
- MONUMENT FOUND
  - MONUMENT SET
  - CONCRETE MARKER
  - POWER POLE
  - S - SET MONUMENT
  - F - FOUND MONUMENT
  - Y.C. - YELLOW CAP
  - PPOL - POWER POLE
  - C.P. - CORNER FENCE POST
  - G.P. - GATE POST
  - TPED - TELEPHONE PEDISTAL
  - A.G. - ABOVE GROUND

## PLAN - VIEW NORTH 1/4 CORNER 12-84-40

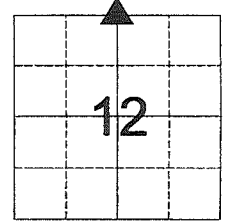


NO SCALE

ALL TIES ARE "X" NAILS UNLESS NOTED OTHERWISE.  
 ALL DISTANCES ARE HORIZONTAL UNLESS OTHERWISE NOTED.

I HEREBY CERTIFY THAT THIS LAND SURVEYING DOCUMENT WAS PREPARED AND THE RELATED SURVEY WORK WAS PERFORMED BY ME OR UNDER MY DIRECT PERSONAL SUPERVISION AND THAT I AM A DULY LICENSED LAND SURVEYOR UNDER THE LAWS OF THE STATE OF IOWA.

*Daniel G. Messerich* 8-20-17  
 SIGNATURE DATE  
 DANIEL G. MESSERICH  
 PRINTED OR TYPED NAME  
 21443  
 MY LICENSE RENEWAL DATE IS: DECEMBER 31, 2018  
 PAGES OR SHEETS COVERED BY THIS SEAL:  
 THIS SHEET



LIST CORNER TO BE INDEXED

CORNER	SECTION	TWP	RANGE
N	12	84	40

