

INDEXED 2/8/13  
 FOLLOW UP 8/8  
 PAGES 1  
 SCANNED 1

Crawford County Recorder  
 Denise Meeves  
**Fee Book 2013-1642**  
 07/12/2013 @11:40AM  
 PLC PLAT CORNER CER  
 Book: Page: # Pages: 1  
 Total Fees: \$7.00

PREPARED BY - JAMES C. SAILER - IDOT, P.O.B. 987, SIOUX CITY IOWA 51102-0987 PHONE (712) 276-1451



UNITED STATES PUBLIC LAND SURVEY CORNER CERTIFICATE  
 OF

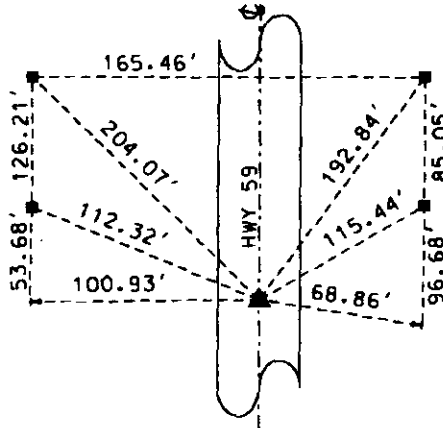
Land Survey Monument Situated in Section 12,  
 Township 84 NORTH, Range 40 WEST Of The Fifth Principal Meridian,  
 CRAWFORD County, Iowa. Previously Recorded In \_\_\_\_\_  
 In The County Recorders Office.

Monument Description and Remarks:

- ① E 1/4 CORNER SEC 12-84-40. FOUND PK NAIL IN ACC. SET IDOT BRONZE DISK W/ CUT TRIANGLE IN NEW ASPHALT OVERLAY
- ② NE CORNER SEC 12-84-40. FOUND PK NAIL IN ACC. SET IDOT BRONZE DISK W/ CUT TRIANGLE IN NEW ASPHALT OVERLAY

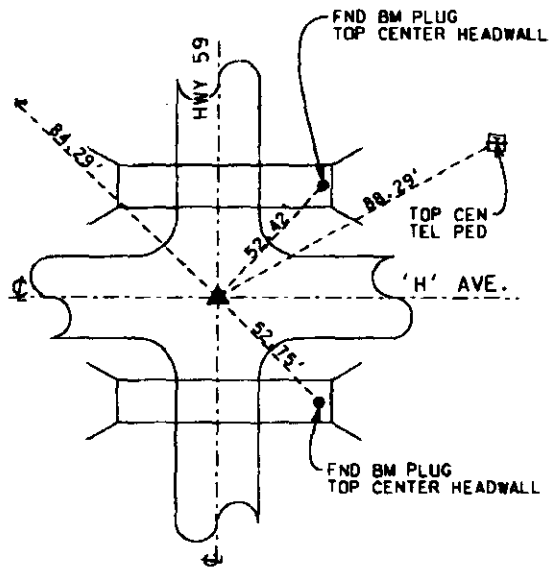
PLAN - VIEW

① E 1/4 CORNER SEC 12-84-40



⊣ = BACK OF ROW RAIL  
 ■ = CONCRETE MONUMENT

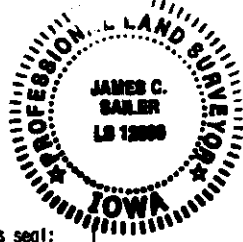
② NE CORNER SEC 12-84-40



⊣ = BACK OF ROW RAIL

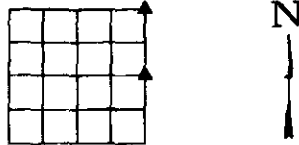
I hereby certify that this land surveying document was prepared and the related survey work was performed by me or under my direct personal supervision and that I am a duly licensed Professional Land Surveyor under the Laws of the State of Iowa.

Signature: James C. Sailer 7/10/13 Date  
 James C. Sailer - Lic. No. 12090



My License Renewal  
 Date is December 31, 2014  
 Pages or sheets covered by this seal:

IOWA DEPARTMENT OF TRANSPORTATION  
 CRAWFORD COUNTY FIELD BOOK 1, PAGE 81-82  
 CERTIFICATE NUMBER 24-02



DATE: 06/07/2013 BY: COH

Corner to be Indexed

| Corner     | Section | Twp | Range |
|------------|---------|-----|-------|
| NORTH EAST | 12      | 84  | 40    |
| EAST 1/4   | 12      | 84  | 40    |