

# UNITED STATES PUBLIC LAND SURVEY CORNER CERTIFICATE OF

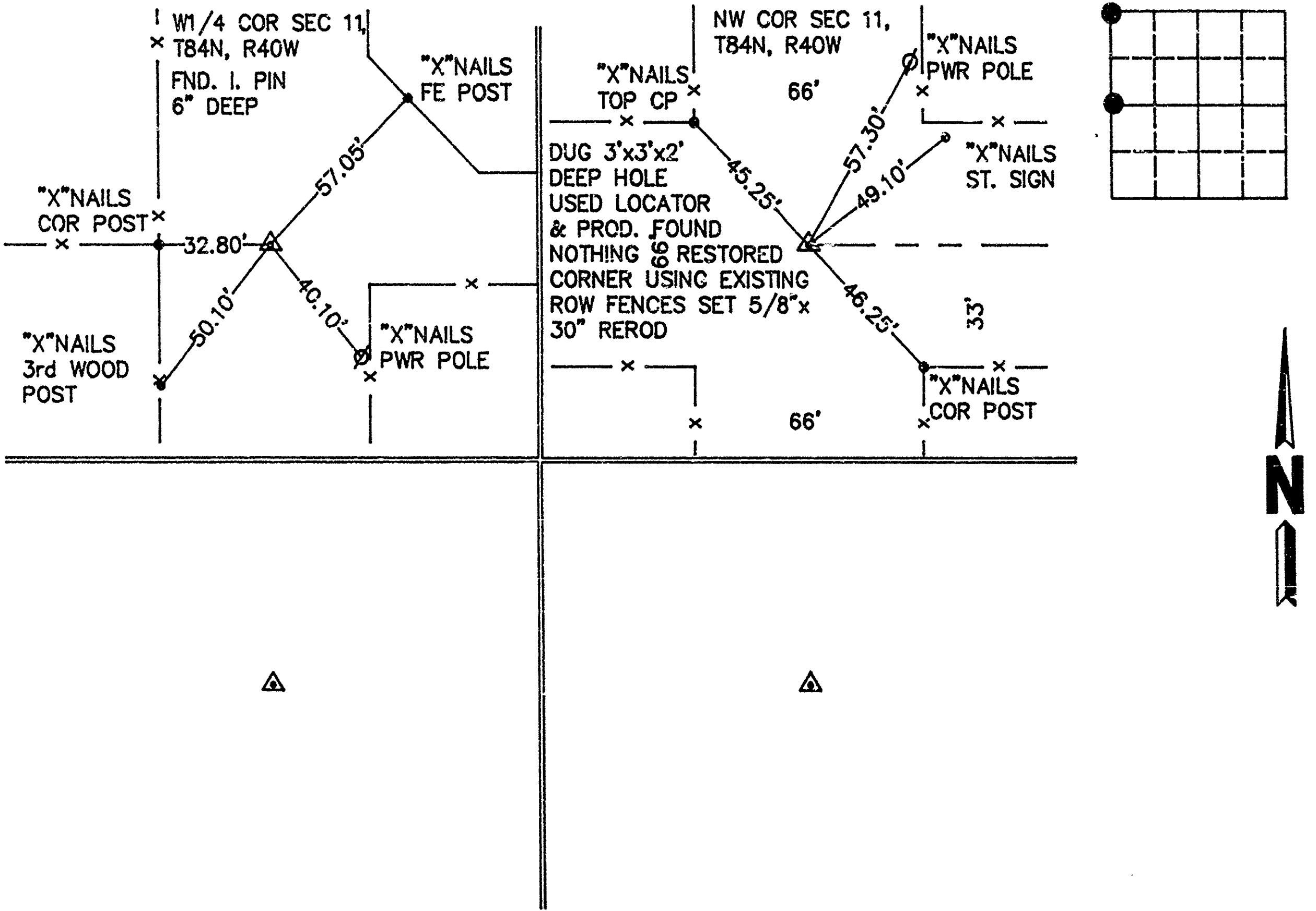
Land Survey Monuments in Section 11, Township 84, Range 40, of the Fifth Principal Meridian, CRAWFORD County, Iowa.  
Previously recorded in NONE in County Recorder's Office.  
(book, page, document number, etc.)

(Show reason for preparing this certificate, the evidence and detailed procedures used in establishing the corner positions and monumentation found or placed.)

Monument Description and Remarks: \_\_\_\_\_  
\_\_\_\_\_  
\_\_\_\_\_  
\_\_\_\_\_

## PLAN - VIEW

(Show a minimum of three reference ties to durable physical objects, relevant monuments and physical conditions that will enable recovery of the corner.)



I hereby certify that this survey work was completed and this certificate was prepared by me or under my direct personal supervision and that I am a duly registered land surveyor under the laws of the state of Iowa.

Signature: Warder C. Hillhouse Jr.  
Name typed or printed: Warder C. Hillhouse, Jr.

Date: 05/24/94 Reg. No. 6806



SEAL

List Corners to be Indexed			
Corners	Section	Twp	Range
W1/4 COR	11	84	40
NW COR	11	84	40

FILED DENISON, IOWA  
CRAWFORD COUNTY

94 JUN -6 AM 8:59

INST. NO. 94-1486  
DENISE JURGENSEN, RECORDER  
*Denise Jurgensen*  
FEE 6.00

INDEXED  
FOLLOW UP  
PROOFED *ME*

File No. 94068



M.H.F. ENGINEERING, P.C.  
ENGINEERS - LAND SURVEYORS  
Jefferson, Iowa 50128 Ph. (515)386-4101