

8/9 E Cor 8

Found 1 rock 18" x 14" x 23", 1 rock 21" x 8" x 12"  
at a depth of 16" covered and set C.M.

Ties from X-sps (old ties)

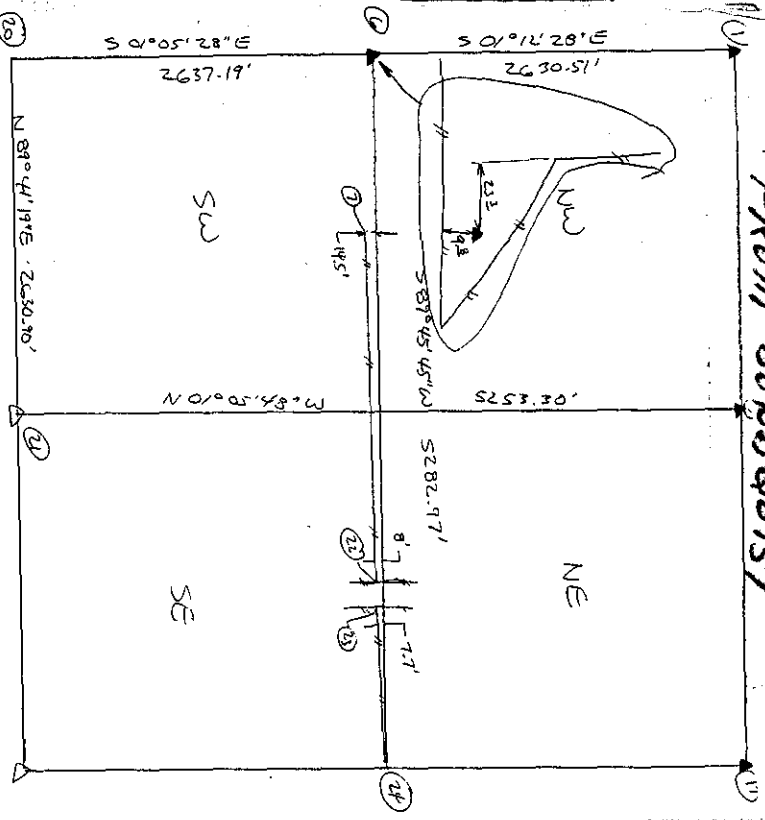
- 23.5 E from Cor Post
- 35.0 SE " " 2nd Post N
- 43.8 SW " " " Cor Post
- 9.8 N.W.W cor. post

Aug. 14, 1964 4" x 4" x 48" conc  
Marker set by Ed Winkel  
Co. Engineer

Ties from "X" spikes

- 23.8 SW from NW wing @ piling
- 25.5 SW from west end North Bridge rail
- 31.0 NW from W. end South Bridge rail
- 39.2 N. from Cor post f.e. S.
- 40.2 N.E. from Brace post
- 47.4 N.E. from Fence post

FROM SUNDQUIST



CUC, BARKER, ELLIEMON

OK 6/19/78

McKeburn crew

NEEDY GRADER R/S

E/L/S

RESET COR FROM INST.

TIES 4" REBET 18" (ODD  
BY DEEP BARKER

