

97 APR 23 PM 2: 35

INST. NO. *97-1047*

DENISE MEEVES, RECORDER

*Denise Meeves*

FE 2 92 IOWA 51442 - PHONE (712)263-8118

PREPARED BY - TERENCE E. CRAWFORD - SUNDQUIST ENGINEERING - 120 S. MAIN DENISON, IOWA

### UNITED STATES PUBLIC LAND SURVEY CORNER CERTIFICATE OF

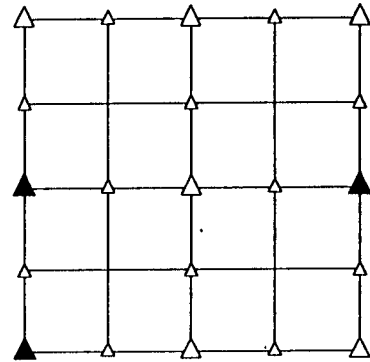
LAND SURVEY MONUMENT SITUATED IN SECTION 6, T 84 N, R 39 W OF  
THE 5TH P.M., CRAWFORD COUNTY, IOWA.  
PREVIOUSLY RECORDED IN BOOK \_\_\_\_\_, PAGE \_\_\_\_\_, OTHER \_\_\_\_\_

#### MONUMENT DESCRIPTION AND REMARKS

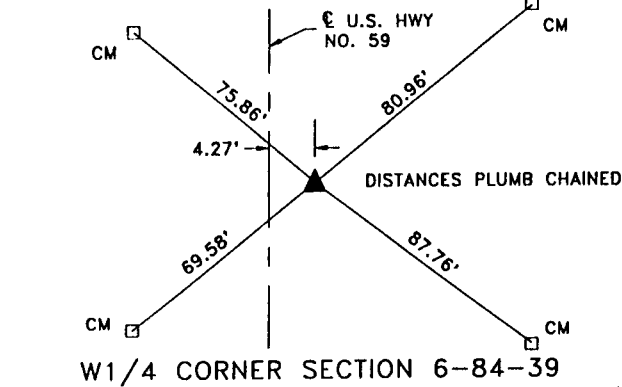
W1/4 CORNER - SET PK NAIL FROM I.D.O.T. TIES

SW CORNER - FOUND PK NAIL

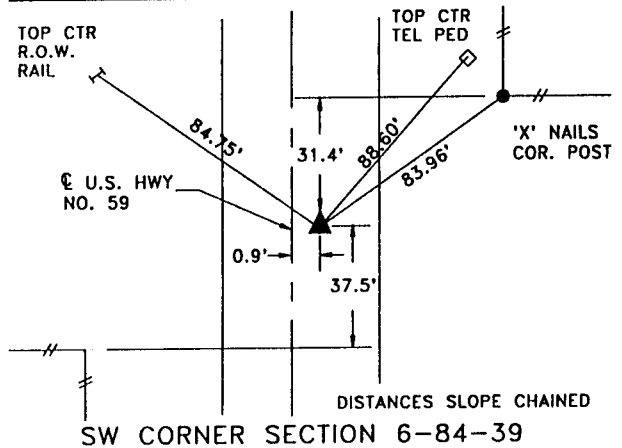
E1/4 CORNER - FOUND BROKEN CM 0.6' DEEP



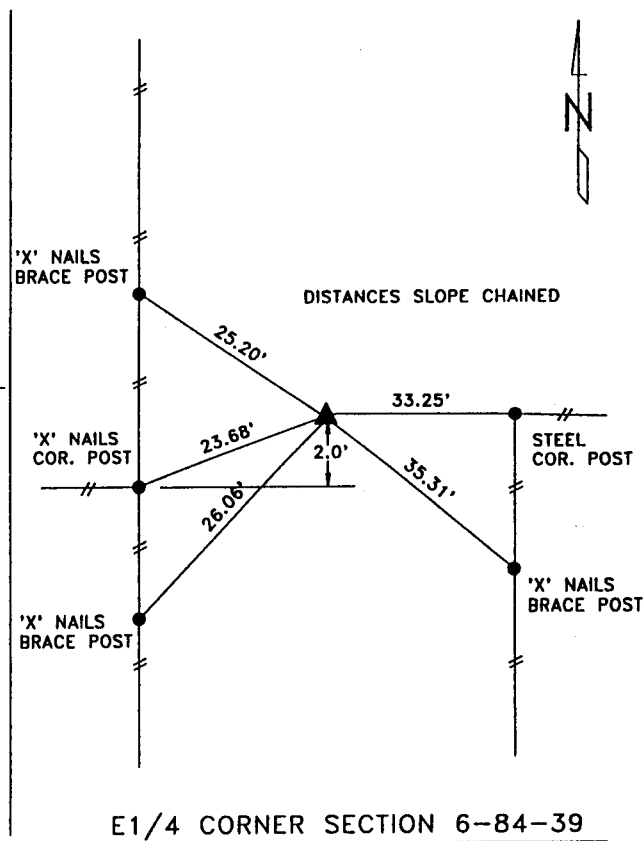
#### PLAN VIEW SHOWING RELATIVE LOCATION OF MONUMENT AND REFERENCE POINTS.



W1/4 CORNER SECTION 6-84-39



SW CORNER SECTION 6-84-39



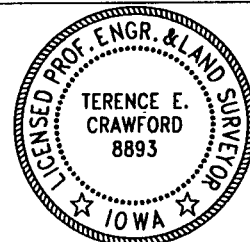
E1/4 CORNER SECTION 6-84-39

I HEREBY CERTIFY THAT THE SURVEY WORK WAS COMPLETED AND THIS LAND SURVEYING DOCUMENT WAS PREPARED BY ME OR UNDER MY DIRECT PERSONAL SUPERVISION AND THAT I AM A DULY LICENSED LAND SURVEYOR UNDER THE LAWS OF THE STATE OF IOWA.

*Terence E. Crawford* 4-3-97

TERENCE E. CRAWFORD  
IA LICENSE NO. 8893

DATE  
EXP. DATE DECEMBER 31, 1997



SE PROJECT NO. 2107