

INDEXED _____
 FOLLOW UP _____
 PROOFED _____
 SCANNED _____

Crawford County Recorder
 Denise Meeves
Fee Book 2010-2302
 10/22/2010 @03:37PM
 PLC: PLAT CORNER CER
 Book: Page: # Pages: 1
 Total Fees: \$0.00

PREPARED BY: MICKAEL F. BERNDT - CRAWFORD COUNTY ENGINEER'S OFFICE - COURTHOUSE - DENISON, IA. - 712-263-2449

**UNITED STATES PUBLIC LAND SURVEY CORNER CERTIFICATE
 OF
 LAND SURVEY MONUMENT SITUATED IN GOODRICH TOWNSHIP, THE NW CORNER
 OF SECTION 36, T-84N, R-39W OF THE FIFTH P.M. CRAWFORD COUNTY, IOWA.**

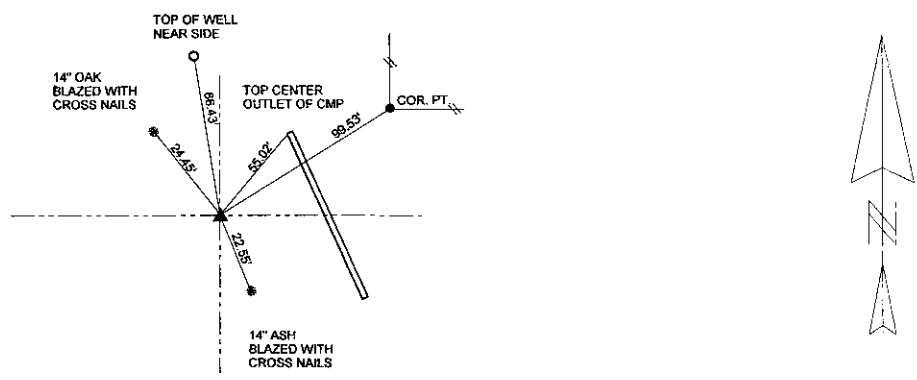
PREVIOUSLY RECORDED IN COUNTY SECTION CORNER BOOK IN ENGINEERS OFFICE.

MONUMENT DESCRIPTION AND REMARKS

NW COR. OF SEC. 36-84-39

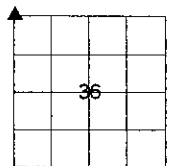
10-12-10 FOUND CM WITH BROKEN OFF TOP 0.2' DEEP. COUNTY FORCES ARE GRADING THE ROAD AND PLACED 2.5' OF FILL OVER THE CM. SET A 5/8" X 14" REBAR W/YELLOW CAP #14808 OVER THE CM AT 10" DEEP. THE PIN WAS THEN TIED OFF.

NW COR. OF SEC. 36-84-39



ALL DISTANCES ARE SLOPED CHAINED
 ALL TIES ARE "X" NAILS UNLESS NOTED.

CORNER: NW COR.
 SECTION: 36
 TOWNSHIP: 84N
 RANGE: 39W



CERTIFICATION: I HEREBY CERTIFY THAT THIS LAND SURVEYING DOCUMENT WAS PREPARED AND THE RELATED SURVEY WORK WAS PERFORMED BY ME OR UNDER MY DIRECT PERSONAL SUPERVISION AND THAT I AM A DULY LICENSED LAND SURVEYOR UNDER THE LAWS OF THE STATE OF IOWA.			
<i>Mickael F. Berndt</i> Signature	10/22/10 Date of Survey		
MICKAEL F. BERNDT Typed Name	14808 L.S. No.	Dec. 31, 2010 License Renewal Date	
Pages covered by this seal <u>1</u>			