


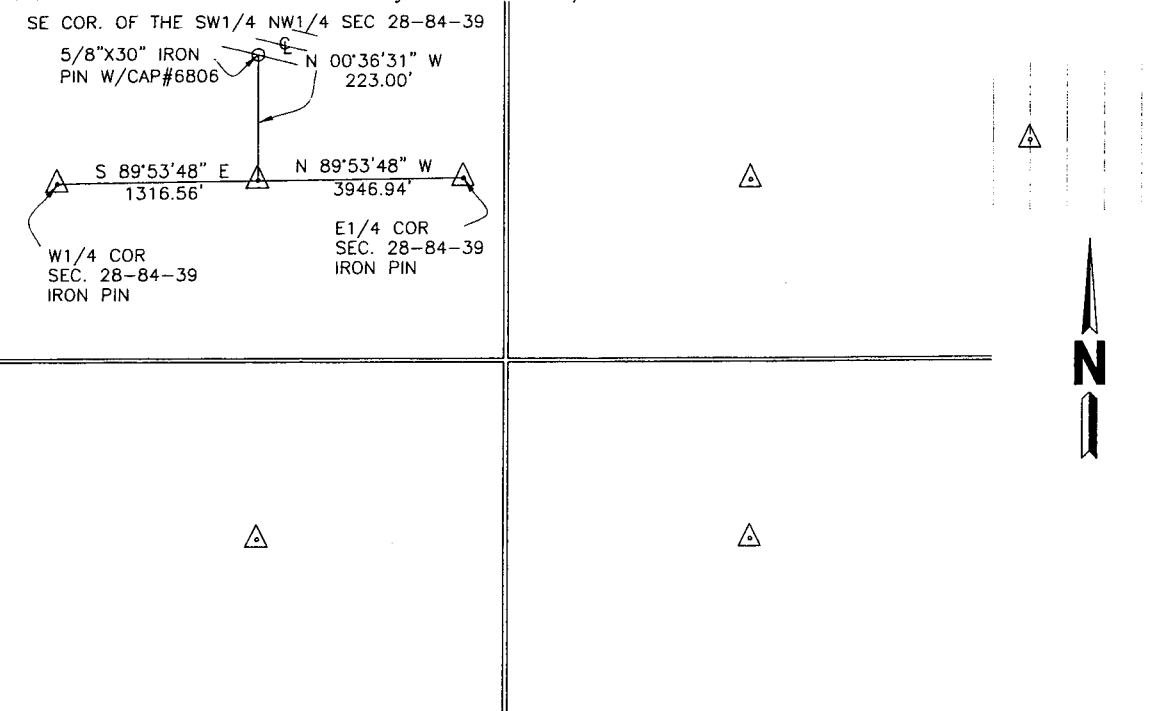
RECORDED ME
 FOLLOW UP ME
 PROOFED _____
 SCANNED ME

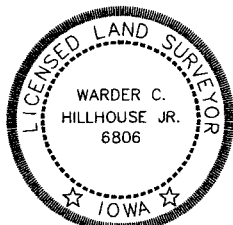
REC008179 
 Crawford County Recorder Denise Meeves
 FEE BOOK 2005-2777 10/13/2005 @ 10:08AM
 PLC PLAT CORNER CERBook: Page:05-2777 #: 1
 Total Fees: \$7.00

WARDER C. HILLHOUSE, JR. MHF ENGINEERING P.C. 300 W. MCKINLEY JEFFERSON, IA. (515)386-4101
UNITED STATES PUBLIC LAND SURVEY CORNER CERTIFICATE OF
 Land Survey Monuments in Section 28, Township 84, Range 39,
 of the Fifth Principal Meridian, CRAWFORD County, Iowa.
 Previously recorded in _____ in County Recorder's Office.
 (book, page, document number, etc.)
 (Show reason for preparing this certificate, the evidence and detailed procedures used in establishing
 the corner positions and monumentation found or placed.)
 Monument Description and Remarks: CORNERS LOCATED FOR SURVEY WORK IN SECTION.

PLAN - VIEW


(Show a minimum of three reference ties to durable physical objects, relevant monuments and physical conditions that will enable recovery of the corner.)



I hereby certify that this land surveying document and the related survey work was performed by me or under my direct personal supervision and that I am a duly licensed land surveyor under the laws of the state of Iowa.
 Signature: Warder C. Hillhouse, Jr.
 Warder C. Hillhouse, Jr.
 Date: 10/4/05 Lic. No. 6806
 License Renewal Dec. 31, 2005
 Date Surveyed: 8/19/05
 Seal 

List Corners to be Indexed

Corners	Section	Twp	Range
SE COR OF SW1/4 NW1/4	28	84	39

 File No. 05147-1

 M.H.F. ENGINEERING, P.C.
 ENGINEERS - LAND SURVEYORS
 Jefferson, Iowa 50129 Ph. (515)386-4101