

INDEXED
FOLLOW UP
ROUTED

FILED DENISON, IOWA
CRAWFORD COUNTY

2003 JUL 25 AM 9:29

INST. NO. 2003-2834

DENISE MEEVES, RECORDER

Denise Meeves
FEE \$11.00

WARDER C. HILLHOUSE, JR. MHF ENGINEERING P.C. 300 W. MCKINLEY JEFFERSON, IA. (515)386-4101

UNITED STATES PUBLIC LAND SURVEY CORNER CERTIFICATE OF

Land Survey Monuments in Section 22, Township 84, Range

39, of the Fifth Principal Meridian, CRAWFORD County, Iowa.

Previously recorded in _____ in County Recorder's Office.
(book, page, document number, etc.)

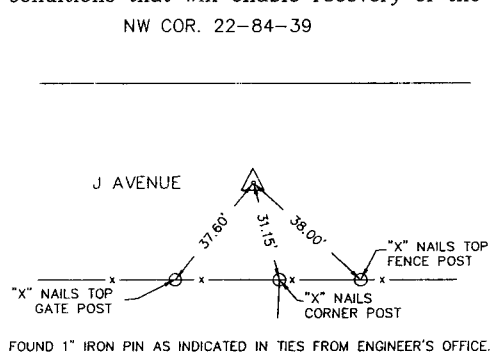
(Show reason for preparing this certificate, the evidence and detailed procedures used in establishing the corner positions and monumentation found or placed.)

Monument Description and Remarks: CORNERS LOCATED FOR SURVEY WORK IN SECTION.

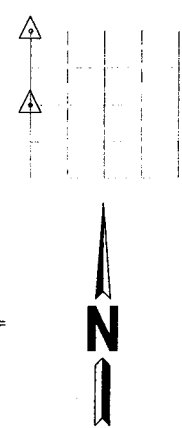
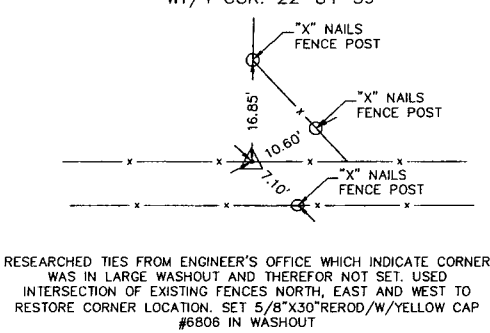
PLAN - VIEW

(Show a minimum of three reference ties to durable physical objects, relevant monuments and physical conditions that will enable recovery of the corner.)

NW COR. 22-84-39



W1/4 COR. 22-84-39



I hereby certify that land surveying document and the related survey work was performed by me or under my direct personal supervision and that I am a duly licensed land surveyor under the laws of the state of Iowa.

Signature: Warder C. Hillhouse Jr.

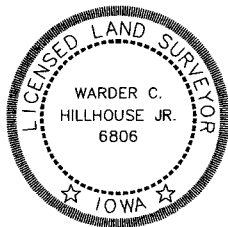
Name typed or printed: Warder C. Hillhouse, Jr.

Date: 7/23/03 Lic. No. 6806

License Renewal Dec. 31, 2003

Date Surveyed: 07/10/03

Seal



List Corners to be Indexed

Corners	Section	Twp	Range
NW COR.	22	84	39
W1/4 COR.	22	84	39

File No. 03137-1



M.H.F. ENGINEERING, P.C.
ENGINEERS - LAND SURVEYORS
Jefferson, Iowa 50129 Ph. (515)386-4101