

INDEXED
 FOLLOW UP h/c
 PROOFED
 SCANNED ry

REC007756



Crawford County Recorder: Denise Meeves
 FEE BOOK 2005-2383 9/07/2005 @ 01:50PM
 PLC PLAT CORNER CERBook: Page:05-2383 #: 1
 Total Fees: \$7.00

PREPARED BY - TERENCE E. CRAWFORD - SUNDQUIST ENGINEERING - 120 S. MAIN, DENISON, IOWA 51442 - PHONE (712) 263-8118

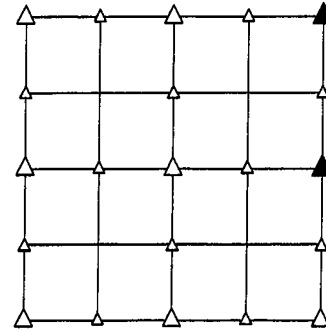
**UNITED STATES PUBLIC LAND SURVEY CORNER CERTIFICATE
 OF**

LAND SURVEY MONUMENT SITUATED IN SECTION 15, T 84 N, R 39 W OF
 THE 5TH P.M., CRAWFORD COUNTY, IOWA.
 PREVIOUSLY RECORDED IN BOOK _____, PAGE _____, OTHER _____

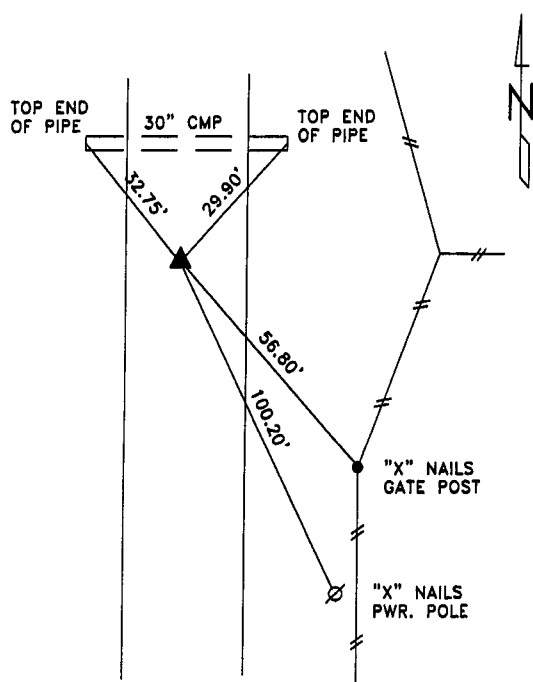
MONUMENT DESCRIPTION AND REMARKS

NE CORNER - FOUND IRON PIN W/CAP #6806 0.9' DEEP, PREVIOUS
 TIES SHOW PIN OVER CM 5' DEEP, CORNER IS IN
 CENTER OF ROAD.

E1/4 CORNER - SET 5/8" DIA. X 30" IRON PIN W/YELLOW CAP
 #8893 0.5' DEEP, DUG & PROBED 8' DEEP,
 COULD NOT FIND CORNER, RESET FROM OLD
 COUNTY TIES.

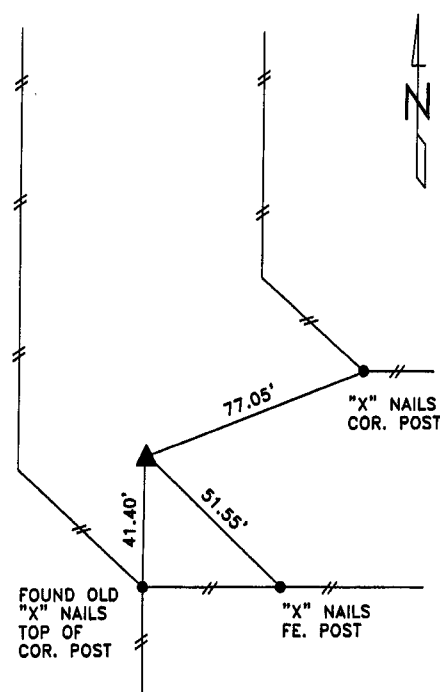


PLAN VIEW SHOWING RELATIVE LOCATION OF MONUMENT AND REFERENCE POINTS.



DISTANCES PLUMB CHAINED

NE CORNER SECTION 15-84-39



DISTANCES PLUMB CHAINED

E1/4 CORNER SECTION 15-84-39

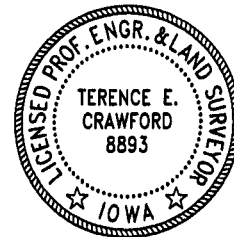
I HEREBY CERTIFY THAT THIS LAND SURVEYING DOCUMENT WAS PREPARED
 AND THE RELATED SURVEY WORK WAS PERFORMED BY ME OR UNDER
 MY DIRECT PERSONAL SUPERVISION AND THAT I AM A DULY LICENSED LAND
 SURVEYOR UNDER THE LAWS OF THE STATE OF IOWA.

Terence E. Crawford

AUG 08 2005

TERENCE E. CRAWFORD
 IA LICENSE NO. 8893

DATE
 EXP. DATE DECEMBER 31, 2005



SE PROJECT NO. 24005
 DRAWN BY: LLL