

FILED DENISON, IOWA INDEYFD 4/24
 CRAWFORD COUNTY FOLLOW UP 8/03
 2003 APR 24 AM 9:41 PROOFED ✓
 INST. NO. 2003-1504
 DENISE MEEVES, RECORDER
Denise Meeves
 FEE \$ 60.00

WARDER C. HILLHOUSE, JR. MHF ENGINEERING P.C. 300 W. MCKINLEY JEFFERSON, IA. (515)386-4101

UNITED STATES PUBLIC LAND SURVEY CORNER CERTIFICATE OF

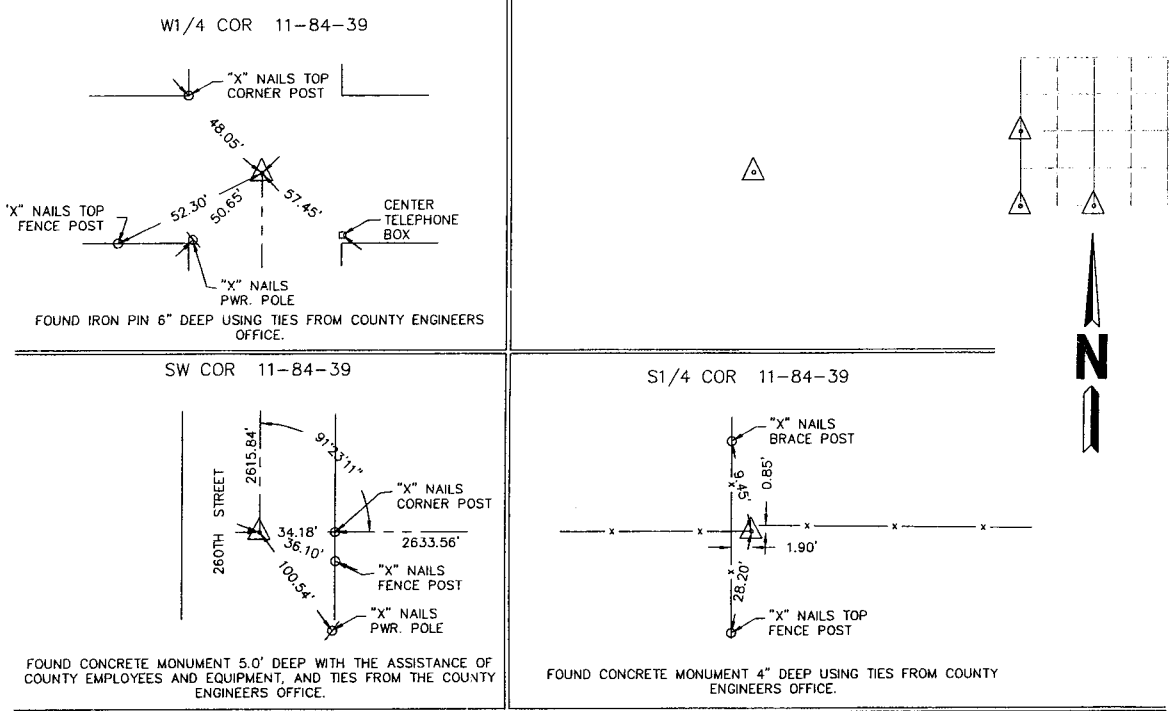
Land Survey Monuments in Section 11, Township 84, Range 39, of the Fifth Principal Meridian, CRAWFORD County, Iowa. Previously recorded in _____ in County Recorder's Office.
 (book, page, document number, etc.)

(Show reason for preparing this certificate, the evidence and detailed procedures used in establishing the corner positions and monumentation found or placed.)

Monument Description and Remarks: CORNERS LOCATED FOR SURVEY WORK IN SECTION.

PLAN - VIEW

(Show a minimum of three reference ties to durable physical objects, relevant monuments and physical conditions that will enable recovery of the corner.)

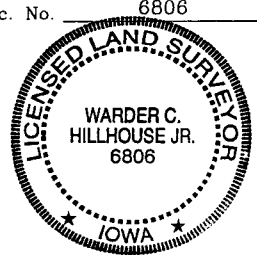


I hereby certify that land surveying document and the related survey work was performed by me or under my direct personal supervision and that I am a duly licensed land surveyor under the laws of the state of Iowa.

Signature: Warder C. Hillhouse, Jr.
 Name typed or printed: Warder C. Hillhouse, Jr.

Date: 4/21/03 Lic. No. 6806

License Renewal Dec. 31, 2003
 Date Surveyed: 04/21/03



Seal

List Corners to be Indexed

Corners	Section	Twp	Range
W1/4 COR	11	84	39
SW COR	11	84	39
S1/4 COR	11	84	39

File No. 03032-1

M.H.F. M.H.F. ENGINEERING, P.C.
 ENGINEERS - LAND SURVEYORS
 Jefferson, Iowa 50129 Ph. (515)386-4101