

INDEXED dm/dm
FOLLOW UP _____
PROOFED _____
SCANNED _____

WILKE LAND SURVEYING INC. 401 1800th Street Panama, Iowa 51562 (712)489-2898

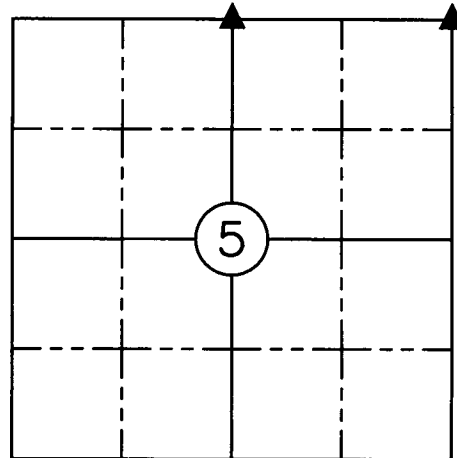
UNITED STATES PUBLIC LAND SURVEY CORNER CERTIFICATE

SECTION 5 TOWNSHIP 83N RANGE 38W COUNTY CRAWFORD

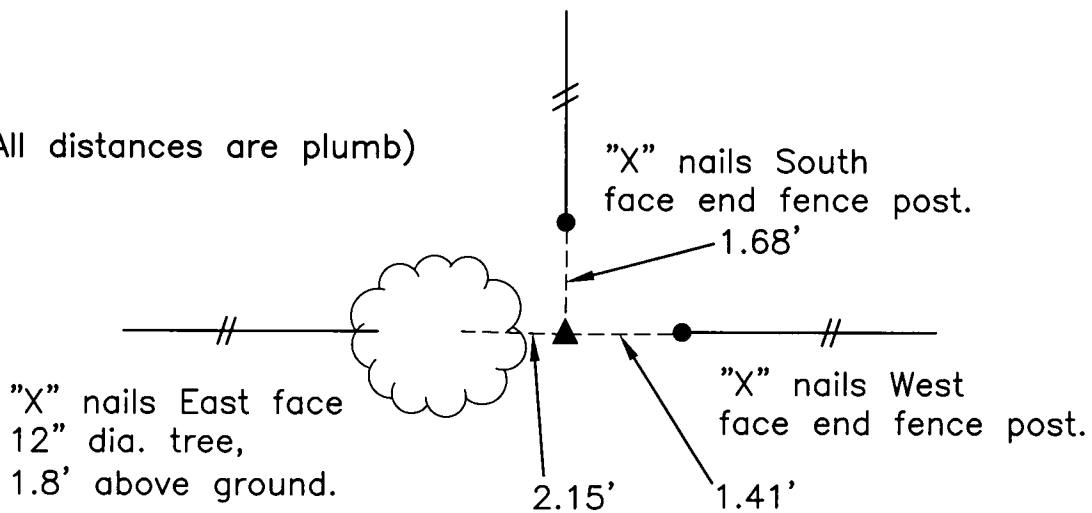
Reason for Certificate: (No record Certificate)

Monument Description and Remarks:

CENTER - No record for this corner was found at the County Engineer's Office. No evidence of ties or a monument was found on site. Surveyed W1/4 Corner & E1/4 Corner to see how the fence intersection point would compare with a straight line from the W1/4 Corner to the E1/4 Corner. The distance off a straight line was great so I set a 5/8" dia. rebar with a orange cap PLS #17048 (flush) at the fence line intersection point.



*(All distances are plumb)



SET 5/8" DIA. REBAR W/ORANGE CAP PLS #17048 (FLUSH).

	<p>I hereby certify that this land surveying document was prepared and the related survey work was performed by me or under my direct personal supervision and that I am a duly licensed Land Surveyor under the laws of the State of Iowa.</p>
	<p><i>Dean A. Wilke</i> 10/20/11 Dean A. Wilke Date</p>
	<p>License number 17048</p>
	<p>My license renewal date is December 31, 2011 Pages or sheets covered by this seal: <u>This page only</u></p>

List Corners to be Indexed			
Corner	Section	Twp.	Range
CENTER	5	83N	38W