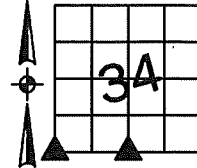


Denise Meeves RECORDER
 Crawford County, Iowa
 Instr. Number: 2022-2419
 Recorded: 10/6/2022 at 8:02:52.0 AM
 Pages 1
 County Recording Fee: \$7.00
 Iowa E-Filing Fee: \$3.13
 Combined Fee: \$10.13
 Revenue Tax:

PREPARED BY AND RETURN TO: MIKE SCHULTE, SCHULTE SURVEYING, INC., 2003 390TH STREET, WESTSIDE, IA 51467 (712) 790-3489

UNITED STATES PUBLIC LAND SURVEY CORNER CERTIFICATE OF
 LAND SURVEY MONUMENTS SITUATED IN SECTION 34, TOWNSHIP 84 NORTH, RANGE 38 WEST, OF THE FIFTH
 PRINCIPAL MERIDIAN, CRAWFORD COUNTY, IOWA. PREVIOUSLY RECORDED IN SEE BELOW IN COUNTY
(book, page instrument number)
 RECORDER'S OFFICE.

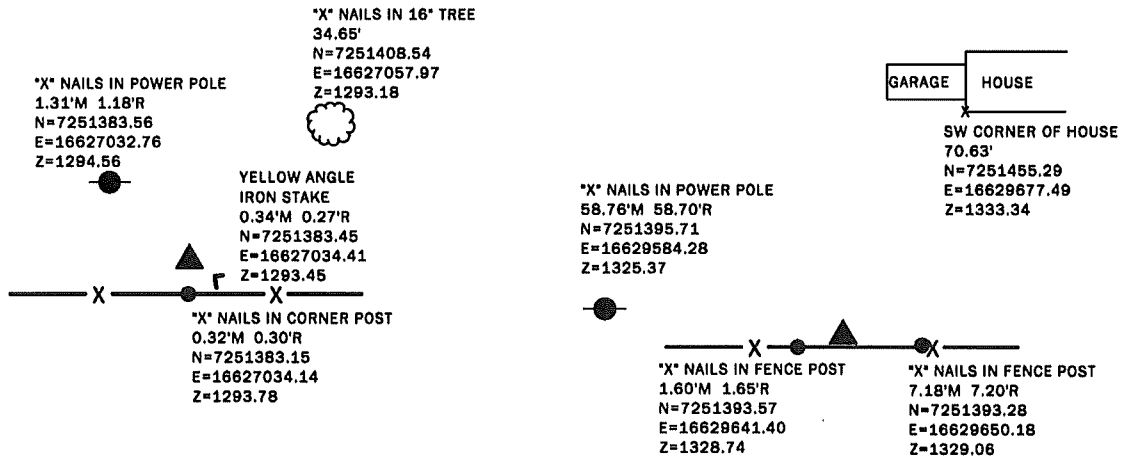


SOUTHWEST CORNER

FND CONCRETE MONUMENT AT THE SURFACE
 N=7251383.46 E=16627034.06 Z=1293.34
 USED CERTIFICATE RECORDED IN INSTRUMENT NO. 98-1965 TO FIND
 A CONCRETE MONUMENT AT THE SURFACE. VERIFIED FOUND
 MONUMENT WITH 2 REMAINING TIES AND ACCEPTED.
 THIS CERTIFICATE IS BEING FILED BECAUSE THERE ARE NO LONGER
 THREE REFERENCE TIES.

SOUTH 1/4 CORNER

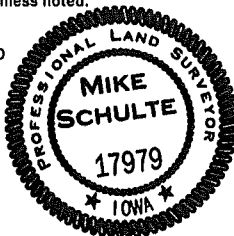
FND CONCRETE MONUMENT 12" DEEP
 N=7251393.65 E=16629643.00 Z=1326.67
 USED CERTIFICATE RECORDED IN INSTRUMENT NO. 98-1965 TO
 FIND A CONCRETE MONUMENT 12" DEEP. VERIFIED FOUND
 MONUMENT WITH 2 REMAINING TIES AND ACCEPTED.
 THIS CERTIFICATE IS BEING FILED BECAUSE THERE ARE NO LONGER
 THREE REFERENCE TIES.



*All distances are measured horizontally unless noted.

I HEREBY CERTIFY THAT THIS LAND SURVEYING DOCUMENT WAS
 PREPARED BY ME OR UNDER MY DIRECT PERSONAL SUPERVISION AND
 THAT I AM A DULY LICENSED PROFESSIONAL LAND SURVEYOR UNDER
 THE LAWS OF THE STATE OF IOWA.

Mike Schulte
 MIKE SCHULTE
 LICENSE NUMBER: 17979
 LICENSE RENEWAL DATE IS DECEMBER 31, 2023
 PAGES COVERED BY THIS SEAL: 1 OF 1
 2022/09/23
 DATE



LIST CORNERS TO BE INDEXED

CORNER	SECTION	TWP	RANGE
S1/4 CORNER	34	84	38
N1/4 CORNER	3	83	38
SW CORNER	34	84	38
SE CORNER	33	84	38
NE CORNER	4	83	38
NW CORNER	3	83	38

BASIS OF BEARING

18RCS ZONE 6 - US SURVEY FEET
 18RTN DERIVED - NAD83(2011)(EPOCH 2010.00)

SCHULTE SURVEYING, INC.

DRAWN BY: MLS/SLG
 PROJ NUMBER: 22-056