

2000 JA 28 AM 10:00

INST. NO. 2000-0226

DENISE MEEVES, RECORDER

*Denise Meeves*

FEE \$ 6.00 *Marygaten Deputy*

PREPARED BY - TERENCE E. CRAWFORD - SUNDQUIST ENGINEERING - 120 S. MAIN, DENISON, IOWA 51442 - PHONE (712)263-8118

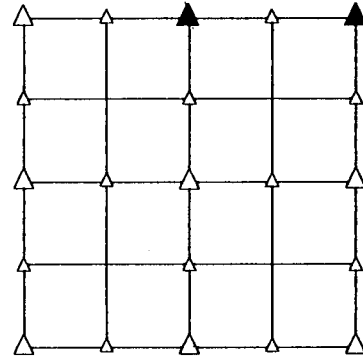
### UNITED STATES PUBLIC LAND SURVEY CORNER CERTIFICATE OF

LAND SURVEY MONUMENT SITUATED IN SECTION 36, T 83 N, R 38 W OF  
THE 5TH P.M., CRAWFORD COUNTY, IOWA.  
PREVIOUSLY RECORDED IN BOOK \_\_\_\_\_, PAGE \_\_\_\_\_, OTHER \_\_\_\_\_

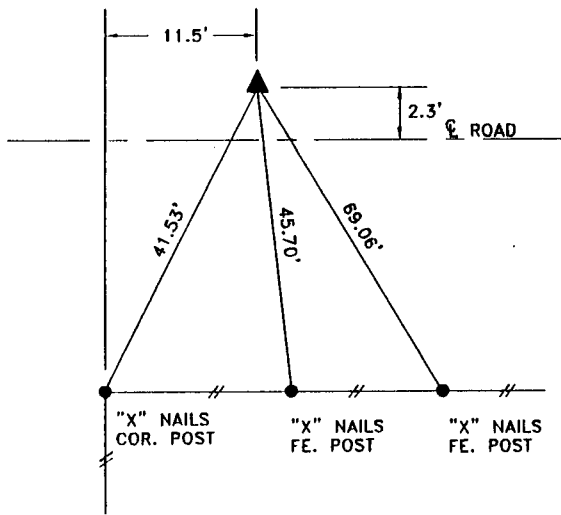
#### MONUMENT DESCRIPTION AND REMARKS

N1/4 CORNER - CORNER WAS GRADED OUT BY COUNTY, RESET  
CORNER FROM INFORMATION ON CORNER  
CERTIFICATE INSTR. NO. 99-1039, DATED 4-7-99,  
SET IRON PIN W/CAP #8893 3" DEEP

NE CORNER - FOUND BOLT 24" DEEP, SET IRON PIN W/CAP  
#8893 OVER BOLT 6" DEEP

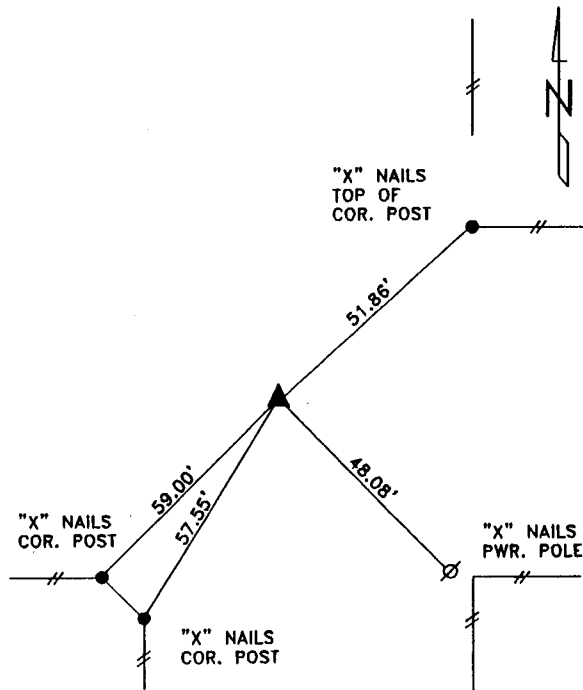


#### PLAN VIEW SHOWING RELATIVE LOCATION OF MONUMENT AND REFERENCE POINTS.



DISTANCES SLOPE CHAINED

N1/4 CORNER SECTION 36-83-38



DISTANCES SLOPE CHAINED

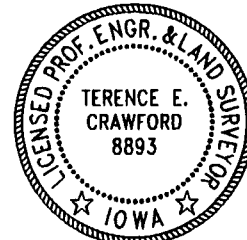
NE CORNER SECTION 36-83-38

I HEREBY CERTIFY THAT THIS LAND SURVEYING DOCUMENT WAS PREPARED  
AND THE RELATED SURVEY WORK WAS PERFORMED BY ME OR UNDER  
MY DIRECT SUPERVISION AND THAT I AM A DULY LICENSED LAND  
SURVEYOR UNDER THE LAWS OF THE STATE OF IOWA.

*Terence E. Crawford* JAN 25 2000  
TERENCE E. CRAWFORD DATE

IA LICENSE NO. 8893

EXP. DATE DECEMBER 31, 2001



SE PROJECT NO. 2519