

INDEXED KM  
 FOLLOW UP \_\_\_\_\_  
 PROOFED \_\_\_\_\_  
 SCANNED \_\_\_\_\_

Instrument #: 2018-1939  
 09/19/2018 08:27:33 AM Total Pages: 1  
 PLC PLAT CORNER CER  
 Recording Fee: \$0.00 Transfer Tax: \$0  
 Denise Neeves, Recorder, Crawford County Iowa



PREPARED BY: PAUL ASSMAN-CRAWFORD COUNTY ENGINEER'S OFFICE-COURTHOUSE-DENISON, IA.-712-263-2449

## UNITED STATES PUBLIC LAND SURVEY CORNER CERTIFICATE OF

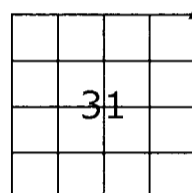
LAND SURVEY MONUMENT SITUATED IN EAST BOYER TOWNSHIP, THE NORTHEAST CORNER OF SECTION 31,  
T-83N, R-38W OF THE FIFTH P.M. CRAWFORD COUNTY, IOWA.

PREVIOUSLY RECORDED AS NO. 2004-1551

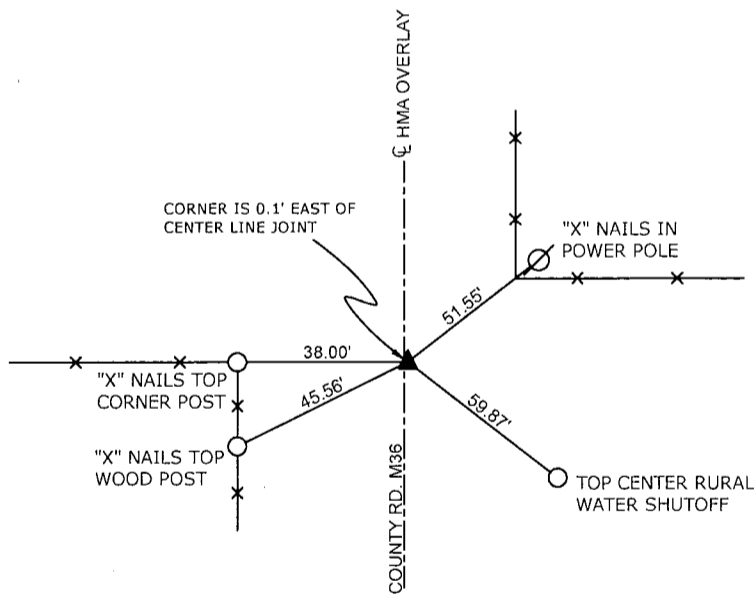
### MONUMENT DESCRIPTION AND REMARKS

NORTHEAST CORNER SEC. 31-83-38

FOUND P.K. NAIL AT SURFACE IN ACCORDANCE WITH PREVIOUS TIES. COUNTY COMPLETED HMA OVERLAY, PROJECT NO. FM-TSF-C024(115). SET 1/2" CARRIAGE BOLT AT SURFACE AND RETIED CORNER.



NORTHEAST CORNER SEC. 31-83-38



ALL DISTANCES ARE SLOPE CHAINED

**CERTIFICATION:**

I HEREBY CERTIFY THAT THIS LAND SURVEYING DOCUMENT WAS PREPARED AND THE RELATED SURVEY WORK WAS PERFORMED BY ME OR UNDER MY DIRECT PERSONAL SUPERVISION AND THAT I AM A DULY LICENSED LAND SURVEYOR UNDER THE LAWS OF THE STATE OF IOWA.

*Paul J. Assman*  
Signature

*7/31/18*  
Date of Survey

PAUL J. ASSMAN  
Typed Name

11982  
L.S. No.

12-31-18  
License Renewal Date

