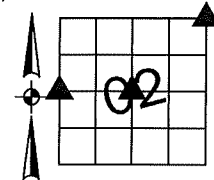


Denise Meeves RECORDER  
 Crawford County, Iowa  
 Instr. Number: 2022-0436  
 Recorded: 2/15/2022 at 3:34:51.0 PM  
 Pages 1  
 County Recording Fee: \$7.00  
 Iowa E-Filing Fee: \$3.13  
 Combined Fee: \$10.13  
 Revenue Tax:

PREPARED BY AND RETURN TO: MIKE SCHULTE, SCHULTE SURVEYING, INC., 2003 390TH STREET, WESTSIDE, IA 51467 (712) 790-3489

**UNITED STATES PUBLIC LAND SURVEY CORNER CERTIFICATE OF**

LAND SURVEY MONUMENTS SITUATED IN SECTION 02, TOWNSHIP 83 NORTH, RANGE 38 WEST, OF THE FIFTH PRINCIPAL MERIDIAN, CRAWFORD COUNTY, IOWA. PREVIOUSLY RECORDED IN SEE BELOW IN COUNTY RECORDER'S OFFICE.  
(book, page instrument number)



**CENTER**

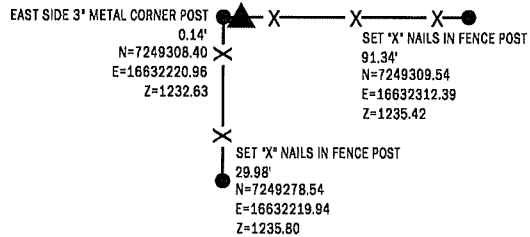
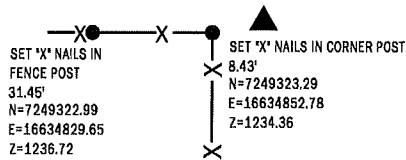
SET 5/8" REBAR YPC #17979  
 N=7249324.95 E=16634861.04

**WEST 1/4 CORNER**

SET 5/8" REBAR YPC #17979  
 N=7249308.50 E=16632221.06

NO RECORD OF CORNER. SET 5/8" REBAR YPC #17979 BY INTERSECTION OF N 1/4 S 1/4 AND E 1/4 W 1/4 CORNERS SINCE OTHER PLATS USED ONLY THE N 1/4 AND S 1/4 CORNERS. THIS CERTIFICATE IS BEING FILED BECAUSE THERE IS NO CERTIFICATE OF RECORD.

USED CERTIFICATE RECORDED IN INSTRUMENT NO. 91-1378 AND A METAL DETECTOR TO SEARCH AREA, FOUND NOTHING. I BELIEVE POINT WAS TORN OUT. SET 5/8" REBAR YPC #17979 BY USING OTHER SECTION CORNERS AND IDOT PLATS AND SURVEYS. THIS CERTIFICATE IS BEING FILED BECAUSE A NEW MONUMENT WAS SET.

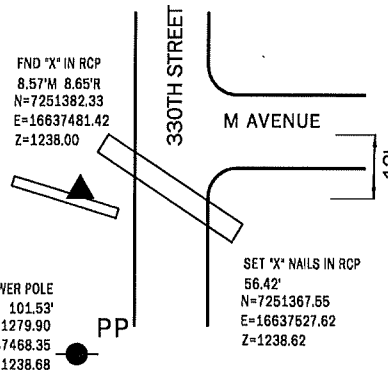


SET "X" NAILS IN FENCE POST  
 48.99'  
 N=7249276.10  
 E=16634857.29  
 Z=1234.81

**NORTHEAST CORNER**

FND 3" IDOT ALUMINUM CAP 3" DEEP  
 N=7251381.33 E=16637472.91 Z=1233.69

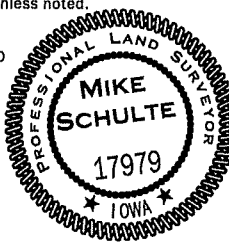
USED CERTIFICATE RECORDED IN INSTRUMENT NO. 91-1379 AND A METAL DETECTOR TO FIND A 3" ALUMINUM IDOT CAP 3" DEEP AS SHOWN ON CERTIFICATE. VERIFIED FOUND MONUMENT WITH 2 REMAINING TIES AND ACCEPTED AS SECTION CORNER. THIS CERTIFICATE IS BEING FILED TO UPDATE REFERENCE TIES.



\*All distances are measured horizontally unless noted.

I HEREBY CERTIFY THAT THIS LAND SURVEYING DOCUMENT WAS PREPARED BY ME OR UNDER MY DIRECT PERSONAL SUPERVISION AND THAT I AM A DULY LICENSED PROFESSIONAL LAND SURVEYOR UNDER THE LAWS OF THE STATE OF IOWA.

*Mike Schulte*  
 MIKE SCHULTE  
 LICENSE NUMBER: 17979  
 LICENSE RENEWAL DATE IS DECEMBER 31, 2023  
 PAGES COVERED BY THIS SEAL: 1 OF 1



**LIST CORNERS TO BE INDEXED**

CORNER	SECTION	TWP	RANGE
CENTER	02	83	38
W1/4 CORNER	02	83	38
E1/4 CORNER	03	83	38
NE CORNER	02	83	38
NW CORNER	01	83	38
SE CORNER	35	84	38
SW CORNER	36	84	38

16RCS ZONE 6 - US SURVEY FEET  
 16RTN DERIVED - NAD83(2011)[EPOCH 2010.00]

**SCHULTE SURVEYING, INC.**

DRAWN BY: MLS  
 PROJ NUMBER: 21-091