



Crawford County Recorder Denise Meeves
 Fee Book 2007-0093 REC013114
 01/10/2007 @0957AM # Pages 1
 PLC PLAT CORNER CER
 Total Fees: \$7.00

INDEXED
 FOLLOW UP
 PROOFED
 SEARCHED

PREPARED BY - TERENCE E. CRAWFORD - SUNDQUIST ENGINEERING - 120 S. MAIN, DENISON, IOWA 51442 - PHONE (712) 263-8118

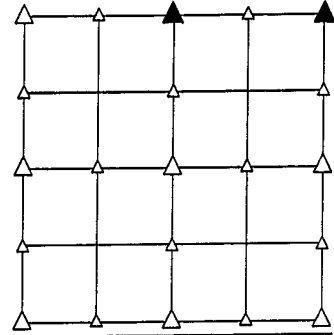
UNITED STATES PUBLIC LAND SURVEY CORNER CERTIFICATE OF

LAND SURVEY MONUMENT SITUATED IN SECTION 27, T 83 N, R 38 W OF
 THE 5TH P.M., CRAWFORD COUNTY, IOWA.
 PREVIOUSLY RECORDED IN BOOK , PAGE , OTHER

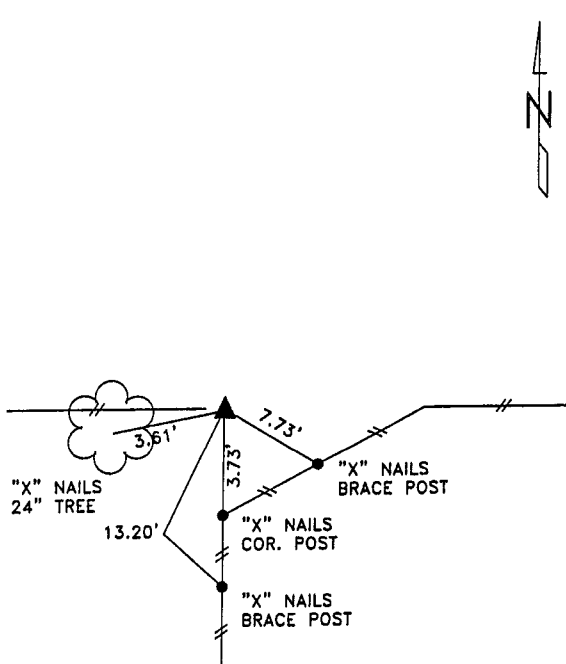
MONUMENT DESCRIPTION AND REMARKS

N1/4 CORNER - SET 5/8" DIA. X 18" IRON PIN W/YELLOW CAP
 #8893 FLUSH, DUG 4' X 4' X 1.5' HOLE AROUND
 CORNER POST & PROBED AN ADDITIONAL 4' DEEP,
 RESET FROM LOCAL EVIDENCE.

NE CORNER - FOUND 1/2" DIA. IRON PIN 0.6' DEEP.

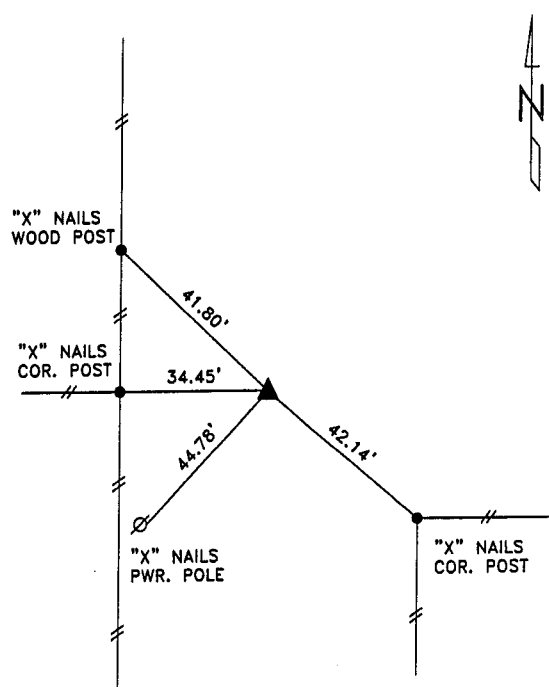


PLAN VIEW SHOWING RELATIVE LOCATION OF MONUMENT AND REFERENCE POINTS.



DISTANCES PLUMB CHAINED

N1/4 CORNER SECTION 27-83-38



DISTANCES PLUMB CHAINED

NE CORNER SECTION 27-83-38

I HEREBY CERTIFY THAT THIS LAND SURVEYING DOCUMENT WAS PREPARED
 AND THE RELATED SURVEY WORK WAS PERFORMED BY ME OR UNDER MY
 DIRECT PERSONAL SUPERVISION AND THAT I AM A DULY LICENSED LAND
 SURVEYOR UNDER THE LAWS OF THE STATE OF IOWA.

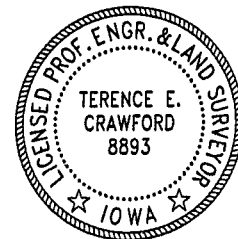
Terence E. Crawford
 TERENCE E. CRAWFORD

IA LICENSE NO. 8893

DEC 15 2006

DATE

EXP. DATE DECEMBER 31, 2007



SE PROJECT NO. 25706
 DRAWN BY: LLL