

INDEXED D
 FOLLOW UP _____
 PROCESSED _____
 SCANNED _____

Instrument #: 2014-0310
 02/11/2014 11:06:48 AM Total Pages: 1
 PLC PLAT CORNER CER
 Recording Fee: \$7.00 Transfer Tax: \$0
 Denise Meeves, Recorder, Crawford County Iowa



Myron G. Daringer, JEO Consulting Group, Inc., 724 Simon Avenue, Carroll, IA 51401 712/792-9711

UNITED STATES PUBLIC LAND SURVEY CORNER CERTIFICATE

E1/4 CORNER

SECTION 24, TOWNSHIP 83 NORTH, RANGE 38 WEST OF THE 5TH P.M., CRAWFORD COUNTY, IOWA

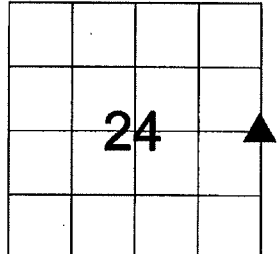
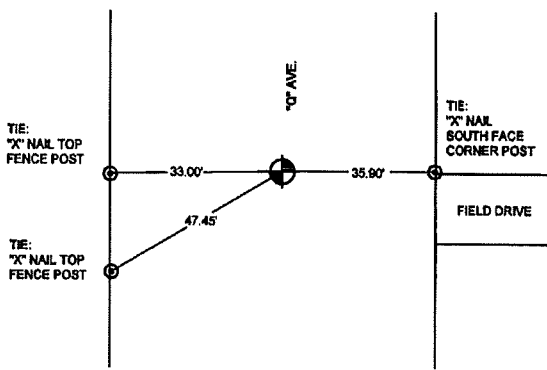
REASON FOR SECTION CORNER CERTIFICATE:
 THERE IS NO CERTIFICATE FOR THE CORNER ON FILE WITH THE RECORDER OF COUNTY IN WHICH THE CORNER IS LOCATED.
 THE SURVEYOR IN RESPONSIBLE CHARGE OF THE LAND SURVEYING ACCEPTS A CORNER POSITION WHICH DIFFERS FROM THAT SHOWN IN THE PUBLIC RECORDS OF THE COUNTY IN WHICH THE CORNER IS LOCATED,
 THE CORNER MONUMENT IS REPLACED OR MODIFIED IN ANY WAY.
 THE REFERENCE TIES IN AN EXISTING PUBLIC RECORD ARE INCORRECT OR MISSING.
 OTHER

DESCRIPTION OF MONUMENT:
 MATERIAL - 1" REBAR
 CAP COLOR -
 CAP NOTATION -
 DEPTH - 1" DEEP
 OTHER -

EXTENT OF SEARCH:
 ___ FOOT RADIUS FROM A POINT CALCULATED FROM RECORDED DISTANCES.
 ___ FEET DEEP.

- LEGEND**
- MONUMENT FOUND
 - MONUMENT SET
 - CONCRETE MARKER
 - POWER POLE
 - S - SET MONUMENT
 - F - FOUND MONUMENT
 - Y.C. - YELLOW CAP
 - PPOL - POWER POLE
 - C.P. - CORNER FENCE POST
 - G.P. - GATE POST
 - TPED - TELEPHONE PEDESTAL
 - C.M. - CONCRETE MARKER
 - A.G. - ABOVE GROUND

PLAN - VIEW E1/4 CORNER



LIST CORNER TO BE INDEXED

CORNER	SECTION	TWP	RANGE
E1/4	24	83	38

DATE
1/29/14

SCALE
NOT TO SCALE

DRAWN
RBB

JOB NO.
R131458.00

FIELD BOOK
CRAWFORD CO. #2

FIELD WORK
RBB/MGD

SHEET 1 OF 1

FILE NO.
131458



I HEREBY CERTIFY THAT THIS LAND SURVEYING DOCUMENT WAS PREPARED AND THE RELATED SURVEY WORK WAS PERFORMED BY ME OR UNDER MY DIRECT PERSONAL SUPERVISION AND THAT I AM A DULY LICENSED LAND SURVEYOR UNDER THE LAWS OF THE STATE OF IOWA.

Myron G. Daringer 2/10/14
 SIGNATURE DATE
 MYRON G. DARINGER
 PRINTED OR TYPED NAME

19758
 MY LICENSE RENEWAL DATE IS: DECEMBER 31, 2015
 PAGES OR SHEETS COVERED BY THIS SEAL:
 THIS SHEET