

UNITED STATES PUBLIC LAND SURVEY CORNER CERTIFICATE

OF

Land Survey Monuments situated in Section 17, Township 83, Range 38, of the Fifth Principal Meridian, Crawford County, Iowa.
 Previously recorded in does not apply in County Recorder's Office.
(book, page, document number, etc.)

(Show reason for preparing this certificate, the evidence and detailed procedures used in establishing the corner positions and monumentation found or placed.)

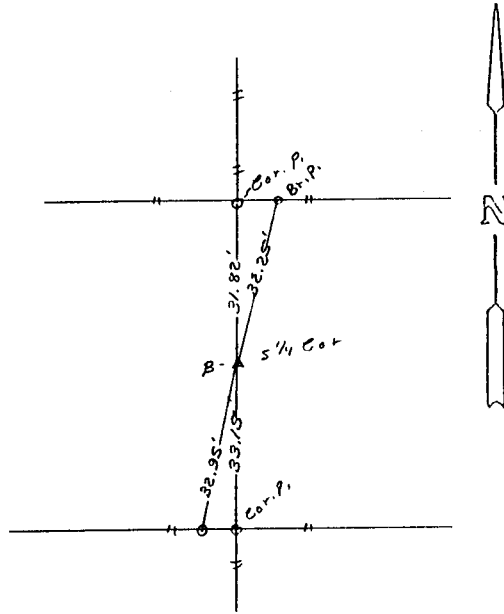
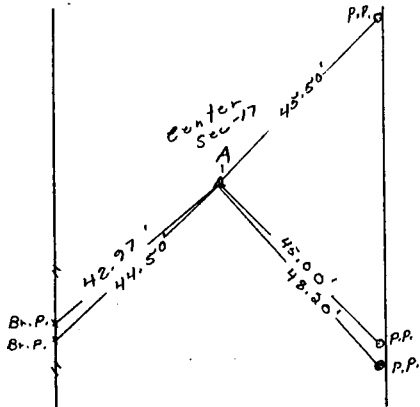
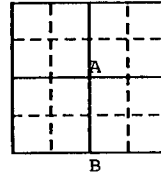
Monument Description and Remarks: A. No corner of record at center of section - set 5/8" x 24" rebar with cap #7718 from road project plans #S2672-4" deep.
B. corner of record - no ties (not found 12-11-39) - set 5/8" x 24" rebar with cap #7718 on line with fence north and split R.O.W. fences - 4" deep.

PLAN - VIEW

(Show a minimum of three reference ties to durable physical objects, relevant monuments and physical conditions that will enable recovery of the corner.)

- A. 5/8" x 24" rebar with cap #7718 set at center of Sec. 17.
 x-nails set in power pole E-NE 45.50'
 " " " " E-SE 45.00'
 " " " " SE 48.20'
 " " top brace post SW 44.50'
 " found brace post SW 42.97'

- B. 5/8" x 24" rebar with cap #7718 set at south 1/4 corner Sec. 17.
 x-nails set in cor. post north 31.82'
 " " " " south 33.15'
 " " brace post NE 32.25'
 " " " " SW 32.95'



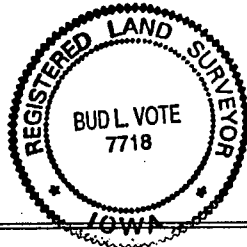
I hereby certify that the survey work was completed and this land surveying document was prepared by me or under my direct personal supervision and that I am a duly registered land surveyor under the laws of the state of Iowa

Signature: Bud L. Vote
 Name typed or printed: Bud L. Vote

Date: May 24, 1995 Reg. No. 7718

My registration renewal date is December 31, 1996

SEAL



Corners	List Corners to be Indexed Section	Twp	Range
Center	17	83	38
S 1/4	"	"	"

FILED DENISON, IOWA
 CRAWFORD COUNTY

95 JUL -7 PM 2:37
 95-1654

INST. NO.
 DENISE MEEVES, RECORDER
 Denise Meeves
 FEE \$6.00

Mary Eiten, Deputy

INDEXED ag
 FOLLOW UP ag
 PROOFED ✓