

PREPARED BY AND RETURN TO: MIKE SCHULTE, SCHULTE SURVEYING, INC., 2003 390TH STREET, WESTSIDE, IA 51467 (712) 790-3489

UNITED STATES PUBLIC LAND SURVEY CORNER CERTIFICATE OF
 LAND SURVEY MONUMENTS SITUATED IN SECTION 12, TOWNSHIP 83 NORTH, RANGE 38 WEST, OF THE FIFTH
 PRINCIPAL MERIDIAN, CRAWFORD COUNTY, IOWA. PREVIOUSLY RECORDED IN SEE BELOW IN COUNTY
(book, page instrument number)
 RECORDER'S OFFICE.

CENTER SECTION

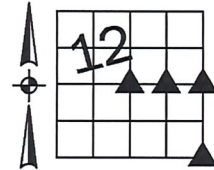
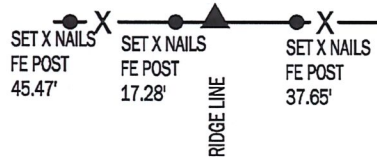
FOUND 60d SPK SET 5/8" REBAR YPC 17979
 NORTHING 7244078.28 EASTING 16640061.59



FOUND 60d SPIKE SET FROM 1985 SURVEY IN SW 1/4 SECTION. ACCEPTED NAIL AND SET 5/8" REBAR WITH YPC 17979 TO BETTER PERPETUATE THE POSITION.

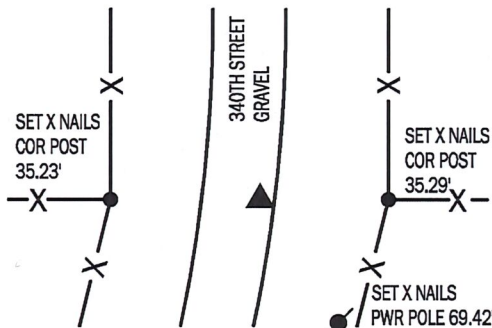
SW COR SENE

SET 5/8" REBAR YPC 17979
 NORTHING 7244083.08 EASTING 16641387.43



E1/4 CORNER

SET 5/8" REBAR YPC 17979 4" DEEP
 NORTHING 7244087.89 EASTING 16642713.27

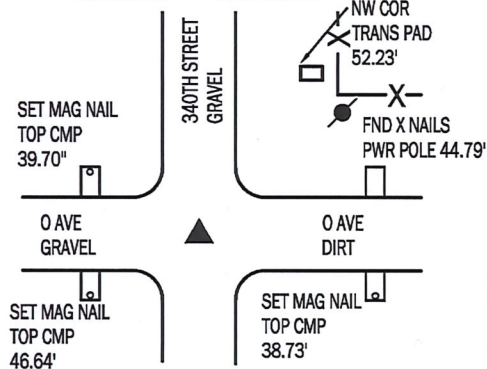


COUNTY ENGINEER'S TIES, INDICATE A PREVIOUS THOROUGHAL SEARCH OF THE AREA WITH A BACKHOE, BUT DID NOT FIND A MONUMENT. MADE A SEARCH WITH METAL LOCATER BUT DID NOT FIND ANYTHING. SPLIT RIGHT OF WAY AT DIVISION FENCES AND USED THE NE CORNER AND THE SE CORNER OF THE SECTION TO VERIFY THE FENCING AND RIGHT OF WAY. SET 5/8" REBAR WITH YPC 17979 4" DEEP. AND TIED CORNER.

NO RECORD OF CORNER FOUND OR MONUMENT OR MONUMENT ACCESSORIES WERE FOUND. USED CENTER SECTION AND W1/4 CORNER TO CALCULATE A POSITION BY PROPORTION. REVIEWED LOCATION WITH EXISTING FENCES, IT FITS A RIDGE LINE SOUTH WELL. ACCEPTED POSITION AND SET MONUMENT.

SE CORNER

FOUND METAL T POST AT SURFACE
 NORTHING 7241461.07 EASTING 16642709.95



USED TIES RECORDED 2005-2093 TO FIND METAL T POST AT GROUND SURFACE. ACCEPTED MONUMENT AND RETIED SINCE SOME OF THE REFERENCES HAVE NOW CHANGED. AT THE TIME OF THE SURVEY, THE GROUND WAS COMPLETELY FROZEN I WOULD ESTIMATE 2' OF FROST, SO LOWING THE MONUMENT WAS NOT POSSIBLE. IF I'M IN THE AREA LATER IN THE SEASON I WILL TRY TO REMEMBER TO LOWER IT A FEW INCHES.

*All distances are measured horizontally unless noted.

I HEREBY CERTIFY THAT THIS LAND SURVEYING DOCUMENT WAS PREPARED BY ME OR UNDER MY DIRECT PERSONAL SUPERVISION AND THAT I AM A DULY LICENSED PROFESSIONAL LAND SURVEYOR UNDER THE LAWS OF THE STATE OF IOWA.

Mike Schulte
 MIKE SCHULTE DATE 2019/02/08
 LICENSE NUMBER: 17979
 LICENSE RENEWAL DATE IS DECEMBER 31, 2019
 PAGES COVERED BY THIS SEAL: 1 OF 1



LIST CORNERS TO BE INDEXED

CORNER	SECTION	TWP	RANGE
CENTER SECTION	12	83	38
SW COR SENE	12	83	38
E1/4 CORNER	12	83	38
W1/4 CORNER	7	83	37
SE CORNER	12	83	38
NE CORNER	13	83	38
SW CORNER	7	83	37
NW CORNER	18	83	37

BASIS OF BEARING

laRCS ZONE 6 - US SURVEY FEET
 laRTN DERIVED - NAD83(2011)(EPOCH 2010.00)