

INDEXED _____
 FOLLOW UP WJ
 PROOFED WJ
 SCANNED _____

REC007431



Crawford County Recorder Denise Meeves
 FEE BOOK 2005-2093 8/05/2005 @ 10:00AM
 PLC PLAT CORNER CERBook: Page:05-2093 #: 1
 Total Fees: \$7.00

RETURN TO SNYDER & ASSOCIATES, INC. 501 SW ORALABOR ROAD, ANKENY, IOWA 50021 (888) 964-2020

UNITED STATES PUBLIC LAND SURVEY CORNER CERTIFICATE OF

Land Survey Monuments situated in Section 13, Township 83, Range 38, of the Fifth Principal Meridian, CRAWFORD, County, Iowa.
 Previously recorded in N/A in County Recorder's Office.
 (book, page, document number, ect.)

(Show reason for preparing this certificate, the evidence and detailed procedures used in establishing the corner positions and monumentation found or placed.)

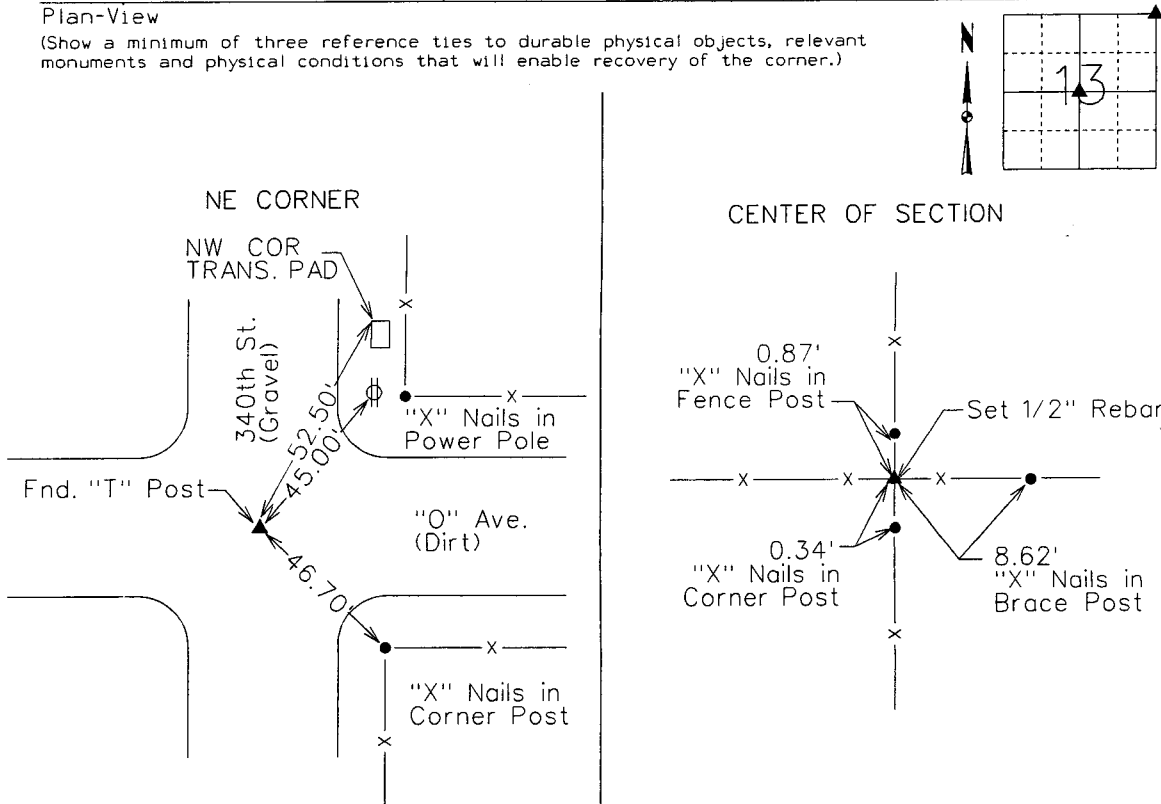
Monument Description and Remarks:

CENTER OF SECTION - DUG AND PROBE AT INTERSECTION OF FENCES. NO RECORDS OF MONUMENTATION FOUND. SET 1/2" REBAR WITH ORANGE CAP *11579.

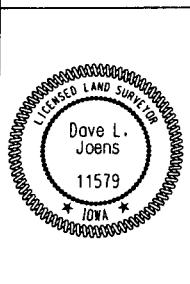
NORTHEAST CORNER - FOUND STEEL FENCE POST 3" DEEP USING METAL LOCATOR AND ENGINEERS TIES.

Plan-View

(Show a minimum of three reference ties to durable physical objects, relevant monuments and physical conditions that will enable recovery of the corner.)



NOTE: ALL DISTANCES ARE SLOPE MEASURED.



I hereby certify that this land surveying document was prepared and the related surveying work was performed by me or under my direct supervision and that I am a duly licensed Land Surveyor under the laws of the State of Iowa.
Dave L. Joens 8/1/2005 Date
 Dave L. Joens, PLS
 License Number 11579
 My License Renewal Date is December 31, 2006
 Pages or sheets covered by this seal:
 SHEET 1 OF 1

List Corners to be Indexed

Corners	Section	Twp	Range
CENTER OF SECTION	13	83	38
NORTHEAST CORNER	13	83	38

TECH: SLW PN: 105.9999 DATE: 7/26/05