

INDEXED DM/asm
 FOLLOW UP _____
 PROOFED asm
 SCANNED asm

PREPARED BY - TERENCE E. CRAWFORD - SUNDUQUIST ENGINEERING - 120 S. MAIN, DENISON, IOWA 51442 - PHONE (712) 263-8118

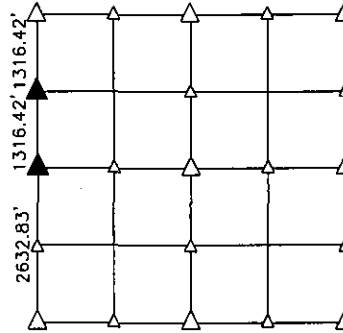
UNITED STATES PUBLIC LAND SURVEY CORNER CERTIFICATE
OF

LAND SURVEY MONUMENT SITUATED IN SECTION 11, T 83 N, R 38 W OF
 THE 5TH P.M., CRAWFORD COUNTY, IOWA.
 PREVIOUSLY RECORDED IN BOOK _____, PAGE _____, OTHER _____

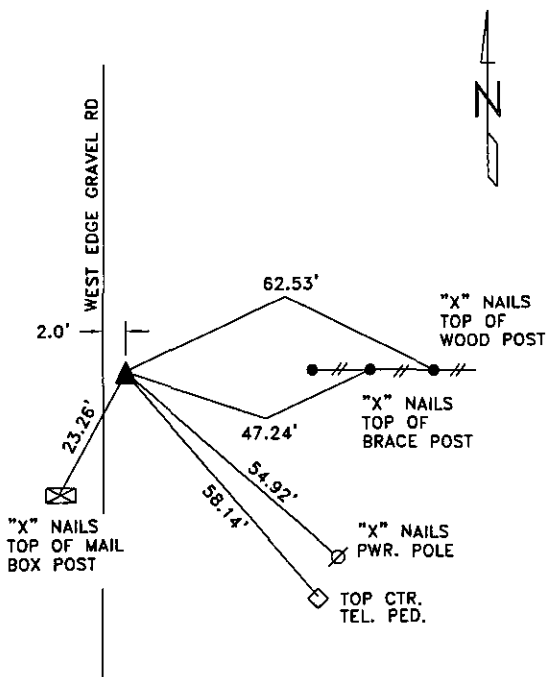
MONUMENT DESCRIPTION AND REMARKS

NW CORNER SW1/4 NW1/4 - SET 5/8" DIA. X 18" IRON PIN
 W/YELLOW CAP #8893 0.6' DEEP,
 SET ON SPLIT BETWEEN NW COR. &
 W1/4 COR. OF SEC. 11.

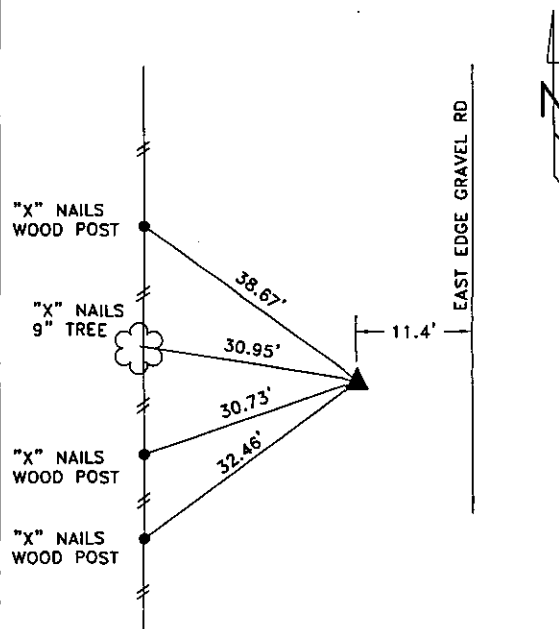
W1/4 CORNER - SET 5/8" DIA. X 18" IRON PIN W/YELLOW CAP
 #8893 0.5' DEEP, SET ON SPLIT BETWEEN NW
 COR. & SW COR. OF SEC. 11 AND FROM OLD
 COUNTY TIES.



PLAN VIEW SHOWING RELATIVE LOCATION OF MONUMENT AND REFERENCE POINTS.



DISTANCES PLUMB CHAINED
 NW CORNER SW1/4 NW1/4
 SECTION 11-83-38

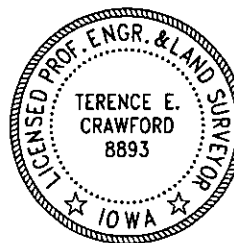


DISTANCES PLUMB CHAINED
 W1/4 CORNER SECTION 11-83-38

I HEREBY CERTIFY THAT THIS LAND SURVEYING DOCUMENT WAS PREPARED
 AND THE RELATED SURVEY WORK WAS PERFORMED BY ME OR UNDER MY
 DIRECT PERSONAL SUPERVISION AND THAT I AM A DULY LICENSED LAND
 SURVEYOR UNDER THE LAWS OF THE STATE OF IOWA.

Terence E. Crawford
 TERENCE E. CRAWFORD
 IA LICENSE NO. 8893

OCT 07 2010
 DATE
 EXP. DATE DECEMBER 31, 2011



SE PROJECT NO. 23010
 DRAWN BY: LLL