

FILED DENISON, IOWA
CRAWFORD COUNTY

INDEXED
FOLLOW UP
PROCESSED

2000 NO 15 PM 2:48

INST. NO. 2000-2883

DENISE MEEVES, RECORDER

Denise Meeves
FEE # 6.00 Mary Gitem, Deputy

PREPARED BY - TERENCE E. CRAWFORD - SUNDBRIST ENGINEERING - 120 S. MAIN, DENISON, IOWA 51442 - PHONE (712)263-8118

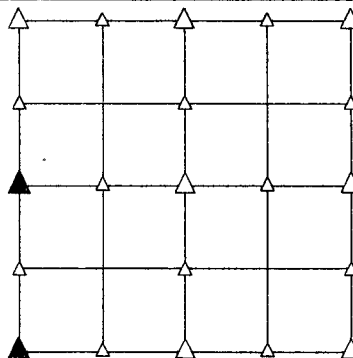
UNITED STATES PUBLIC LAND SURVEY CORNER CERTIFICATE OF

LAND SURVEY MONUMENT SITUATED IN SECTION 3, T 83 N, R 39 W OF
THE 5TH P.M., CRAWFORD COUNTY, IOWA.
PREVIOUSLY RECORDED IN BOOK _____, PAGE _____, OTHER _____

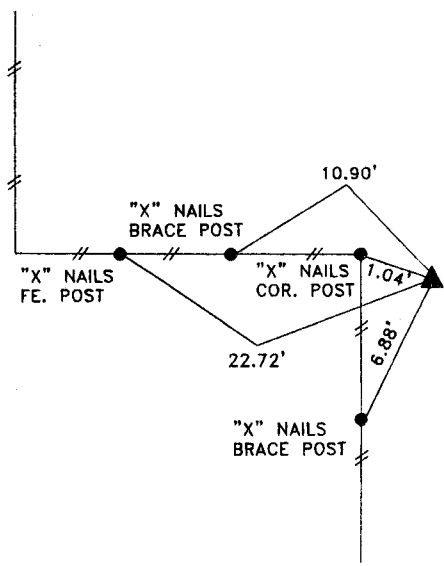
MONUMENT DESCRIPTION AND REMARKS

W1/4 CORNER - FOUND I.D.O.T. RAIL FLUSH

SW CORNER - FOUND IRON PIN 4" EAST OF LARGE STONE, REMOVED
PIN AND SET 5/8" DIA. IRON PIN W/YELLOW CAP
#8893 OVER CENTER OF STONE

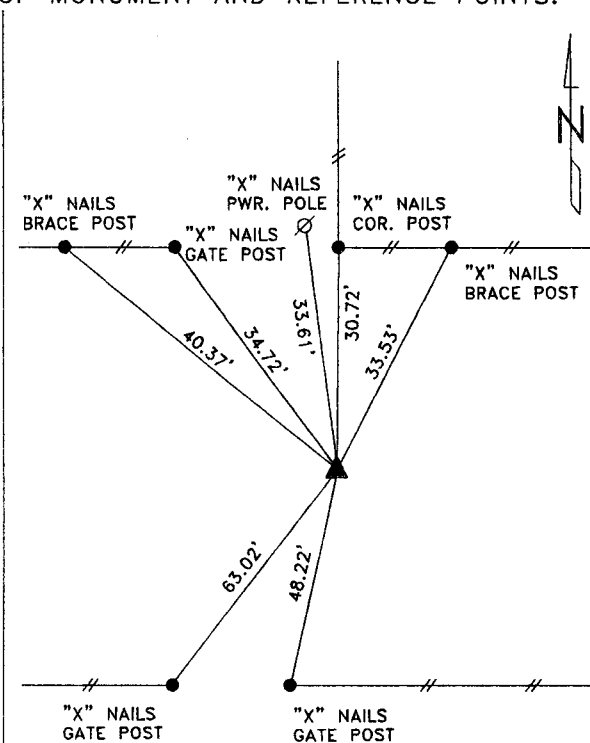


PLAN VIEW SHOWING RELATIVE LOCATION OF MONUMENT AND REFERENCE POINTS.



DISTANCES SLOPE CHAINED

W1/4 CORNER SECTION 3-83-39



DISTANCES SLOPE CHAINED

SW CORNER SECTION 3-83-39

I HEREBY CERTIFY THAT THIS LAND SURVEYING DOCUMENT WAS PREPARED
AND THE RELATED SURVEY WORK WAS PERFORMED BY ME OR UNDER
MY DIRECT SUPERVISION AND THAT I AM A DULY LICENSED LAND
SURVEYOR UNDER THE LAWS OF THE STATE OF IOWA.

Terence E. Crawford

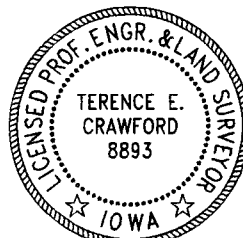
OCT 12 2000

TERENCE E. CRAWFORD

DATE

IA LICENSE NO. 8893

EXP. DATE DECEMBER 31, 2001



SE PROJECT NO. 25400