

Denise Meeves RECORDER  
 Crawford County, Iowa  
 Instr. Number: 2020-1022  
 Recorded: 5/26/2020 at 9:03:32.0 AM  
 Pages 1  
 County Recording Fee: \$7.00  
 Iowa E-Filing Fee: \$3.13  
 Combined Fee: \$10.13  
 Revenue Tax:

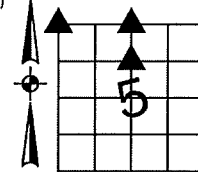
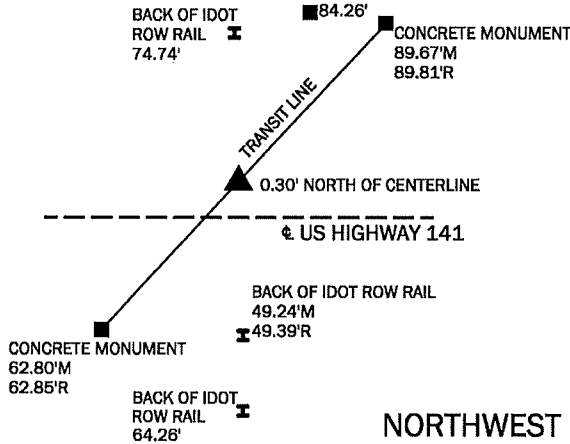
PREPARED BY AND RETURN TO: MIKE SCHULTE, SCHULTE SURVEYING, INC., 2003 390TH STREET, WESTSIDE, IA 51467 (712) 790-3489

**UNITED STATES PUBLIC LAND SURVEY CORNER CERTIFICATE OF**

LAND SURVEY MONUMENTS SITUATED IN SECTION 05, TOWNSHIP 83 NORTH, RANGE 39 WEST, OF THE FIFTH PRINCIPAL MERIDIAN, CRAWFORD COUNTY, IOWA. PREVIOUSLY RECORDED IN SEE BELOW IN COUNTY RECORDER'S OFFICE.  
(book, page instrument number)

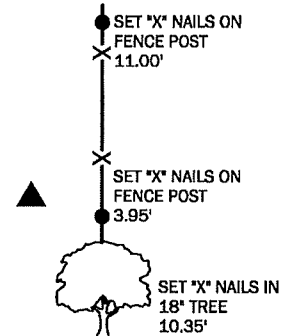
**NORTH 1/4 CORNER**  
 SET MAG NAIL  
 N=7251302.11 E=16587697.26

SEARCHED AREA USING TIES RECORDED IN INSTRUMENT NO. 97-0400 AND A METAL LOCATOR. COULD NOT FIND NAIL AS DESCRIBED IN RECORDED TIE. ROAD HAS BEEN OVERLAID. RESET CORNER USING CONCRETE MONUMENT AND BY PROPORTIONING TRANSIT LINE AND VERIFYING CALCULATED POINT TO OTHER TIES. SET MAG NAIL. THIS TIE IS BEING RECORDED DUE TO REPLACING THE CORNER CONCRETE MONUMENT.



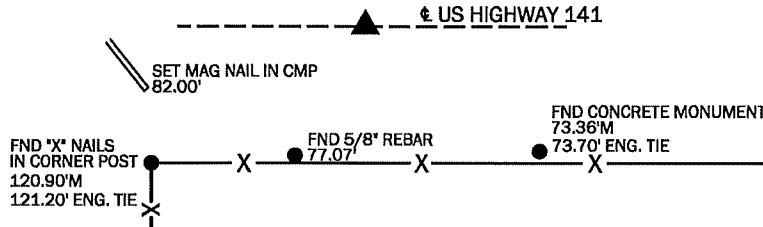
**SOUTHEAST CORNER**  
 NE1/4 FRL. NW1/4  
 SET 5/8" REBAR YPC #17979  
 N=7249971.89 E=16587674.11

NO TIES OR ENGINEER'S TIES FOR CORNER. USED GLO PLAT AND N1/4 & CENTER SECTION CORNERS TO PROPORTION CORNER POSITION. VERIFIED CALCULATED POSITION. THIS TIE IS BEING RECORDED BECAUSE THERE IS NO CERTIFICATE FOR THE CORNER ON FILE.



**NORTHWEST CORNER**  
 SET MAG NAIL  
 N=7251303.76 E=16585091.09

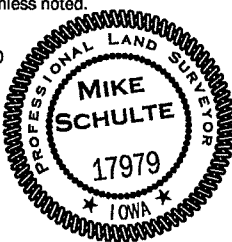
SEARCHED AREA USING ENGINEER'S TIES AND A METAL LOCATOR. COULD NOT FIND NAIL AS DESCRIBED IN TIE. ROAD HAS BEEN OVERLAID. RESET CORNER USING MONUMENTS AND SURVEY TO THE SOUTH. THIS TIE IS BEING RECORDED BECAUSE THERE IS NO CERTIFICATE FOR THE CORNER ON FILE.



\*All distances are measured horizontally unless noted.

I HEREBY CERTIFY THAT THIS LAND SURVEYING DOCUMENT WAS PREPARED BY ME OR UNDER MY DIRECT PERSONAL SUPERVISION AND THAT I AM A DULY LICENSED PROFESSIONAL LAND SURVEYOR UNDER THE LAWS OF THE STATE OF IOWA.

*Mike Schulte*  
 MIKE SCHULTE  
 LICENSE NUMBER: 17979  
 LICENSE RENEWAL DATE IS DECEMBER 31, 2021  
 PAGES COVERED BY THIS SEAL: 1 OF 1  
 DATE: 2020/05/18



**LIST CORNERS TO BE INDEXED**

CORNER	SECTION	TWP	RANGE
N1/4	5	83	39
S1/4	32	84	39
NW	5	83	39
NE	6	83	39
SE	31	84	39
SW	32	84	39
SE CORNER NE1/4NW1/4	5	83	39

**BASIS OF BEARING**

IaRCS ZONE 6 - US SURVEY FEET  
 IaRTN DERIVED - NAD83(2011)(EPOCH 2010.00)

**SCHULTE SURVEYING, INC.**

DRAWN BY: MLS  
 PROJ NUMBER: 20-022