

INDEXED MLG
 FOLLOW UP _____
 PROOFED _____
 SCANNED _____

REC017059
 Crawford County Recorder
 Denise Meeves
Fee Book 2008-0025
 01/04/2008 @11:07AM
 PLC PLAT CORNER CER
 Book: _____ Page: _____ # Pages: 1
 Total Fees: \$7.00

PREPARED BY - JOSEPH P. RUESCHENBERG - SUNDQUIST ENGINEERING - 120 S. MAIN, DENISON, IOWA 51442 - PHONE (712) 263-8118

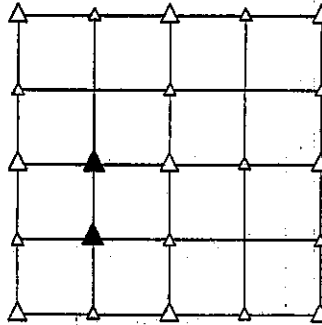
**UNITED STATES PUBLIC LAND SURVEY CORNER CERTIFICATE
 OF**

LAND SURVEY MONUMENT SITUATED IN SECTION 5, T 83 N, R 39 W OF
 THE 5TH P.M., CRAWFORD COUNTY, IOWA.
 PREVIOUSLY RECORDED IN BOOK _____, PAGE _____, OTHER _____

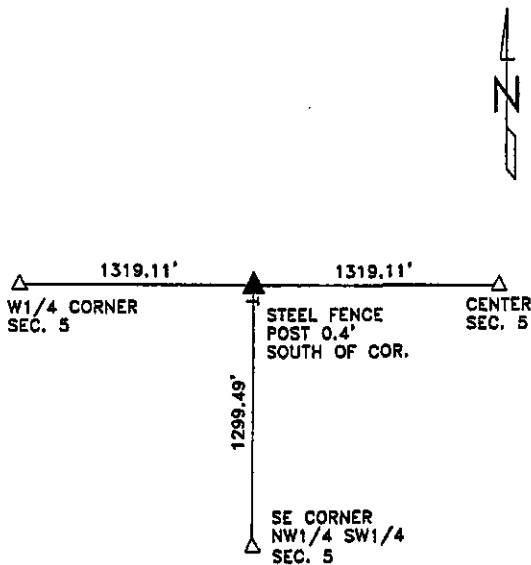
MONUMENT DESCRIPTION AND REMARKS

NE CORNER NW1/4 SW1/4 - SET 5/8" DIA. X 18" IRON PIN
 W/ORANGE CAP #14709 FLUSH, SET
 ON LINE & AT SPLIT BETWEEN W1/4 &
 CENTER OF SECTION 5.

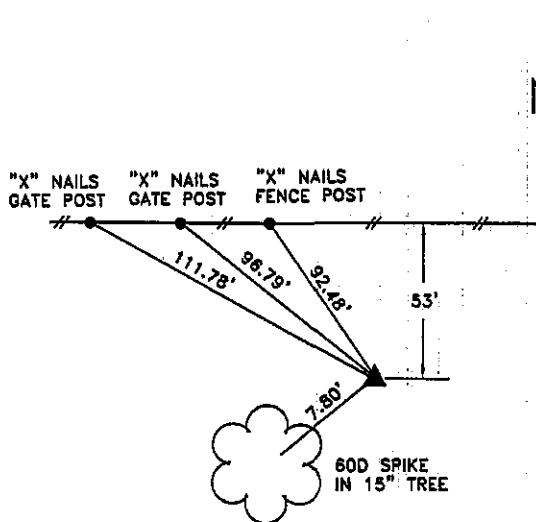
 SE CORNER NW1/4 SW1/4 - SET 5/8" DIA. X 18" IRON PIN
 W/ORANGE CAP #14709 FLUSH, SET
 AT CENTER OF SPLIT OF SW1/4 OF
 SECTION 5.



PLAN VIEW SHOWING RELATIVE LOCATION OF MONUMENT AND REFERENCE POINTS.



DISTANCES PLUMB CHAINED
 NE CORNER NW1/4 SW1/4
 SECTION 5-83-39

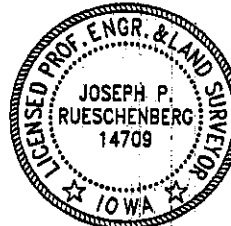


DISTANCES PLUMB CHAINED
 SE CORNER NW1/4 SW1/4
 SECTION 5-83-39

I HEREBY CERTIFY THAT THIS LAND SURVEYING DOCUMENT WAS PREPARED
 AND THE RELATED SURVEY WORK WAS PERFORMED BY ME OR UNDER MY
 DIRECT PERSONAL SUPERVISION AND THAT I AM A DULY LICENSED LAND
 SURVEYOR UNDER THE LAWS OF THE STATE OF IOWA.

Joseph P. Rueschenberg
 JOSEPH P. RUESCHENBERG
 IA LICENSE NO. 14709
 DATE DEC 07 2007

EXP. DATE DECEMBER 31, 2008



SE PROJECT NO. 26607
 DRAWN BY: LLL