

INDEXED _____
 FOLLOW UP _____
 PROOFED _____
 SCANNED _____

Instrument #: 2020-0006
 01/02/2020 12:55:07 PM Total Pages: 1
 PLC PLAT COR CERT
 Recording Fee: \$7.00 Transfer Tax: \$0
 Denise Meeves, Recorder, Crawford County Iowa



WILKE LAND SURVEYING INC. 401 1800th Street Panama, Iowa 51562 (712)489-2898

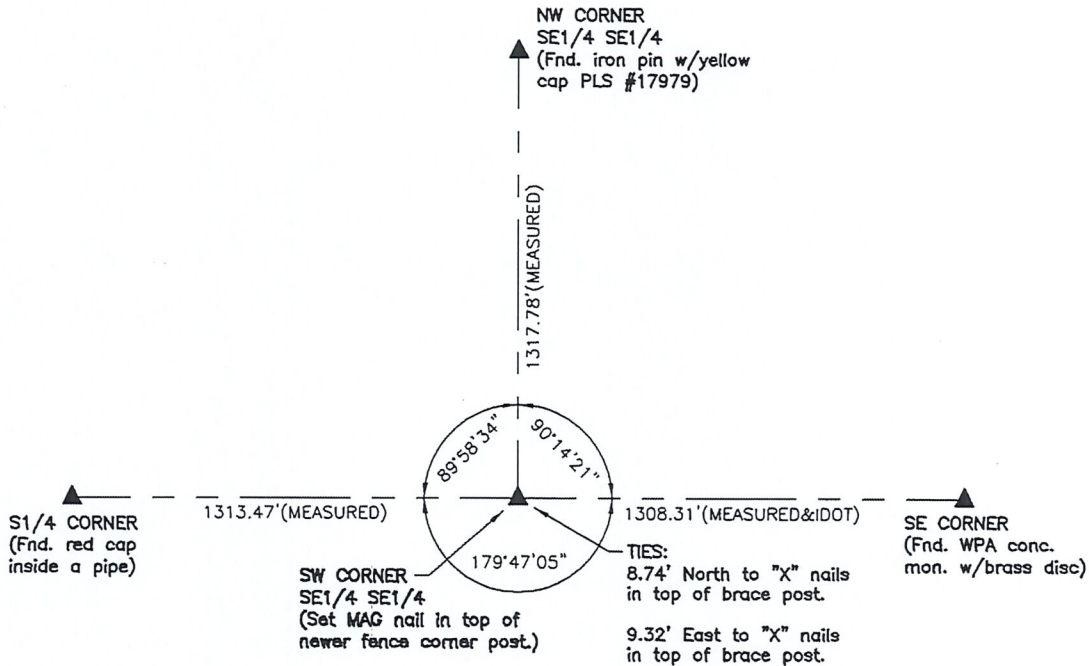
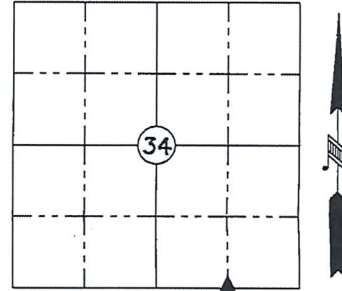
UNITED STATES PUBLIC LAND SURVEY CORNER CERTIFICATE

SECTION 34 TOWNSHIP 84N RANGE 39W COUNTY Crawford

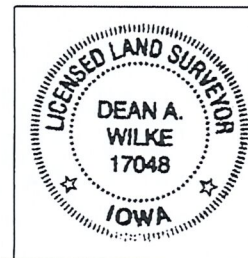
Reason for Certificate: Survey in the SE1/4 SE1/4

Monument Description and Remarks:

SW CORNER SE1/4 SE1/4 - A monument was shown on an I.D.O.T. Land Corner Survey Plat dated October 1972 by PLS #4313, but no monument was found. Ron Reimers, an heir to the SE1/4 SE1/4, stated that a fence ridge was leveled and a newer fence corner post with brace posts were installed in recent years. No fence wires were ever installed on said newer posts. The Corner location was calculated using an I.D.O.T. distance and angle shown on said Land Corner Survey Plat. The location falls in said newer fence corner post, so a MAG nail was set in the top of said newer fence corner post at the calculated location.



ALL DISTANCES ARE HORIZONTAL



List Corners to be Indexed			
Corner	Section	Twp.	Range
SW CORNER SE1/4 SE1/4	34	84N	39W

I hereby certify that this land surveying document was prepared and the related survey work was performed by me or under my direct personal supervision and that I am a duly licensed Land Surveyor under the laws of the State of Iowa.

Dean A. Wilke 12/30/19
 Dean A. Wilke Date

License number 17048
 My license renewal date is December 31, 2019
 Pages or sheets covered by this seal: This page only