

COPY

RECORDED  
FILED  
DATE  
BY

Crawford County Recorder  
Denise Meeves  
Fee Book 2009-1148  
04/24/2009 10:37AM  
PLC PLAT CORNER CER  
Book: Page: # Pages: 1  
Total Fees: \$7.00

PREPARED BY JANELE FOWLDS, PLS. BOLTON & MENK, INC. 1960 PREMIER DRIVE MANKATO, MINNESOTA 56001 (507) 625-4171

UNITED STATES PUBLIC LAND SURVEY CORNER CERTIFICATE  
OF

Land Survey Monuments situated in Section 3, Township 83 North, Range 39 West of the Fifth Principal Meridian, Crawford County, Iowa. Previously recorded in \_\_\_\_\_ (not recorded) \_\_\_\_\_ in County Recorder's Office.

Monument Description and Remarks:

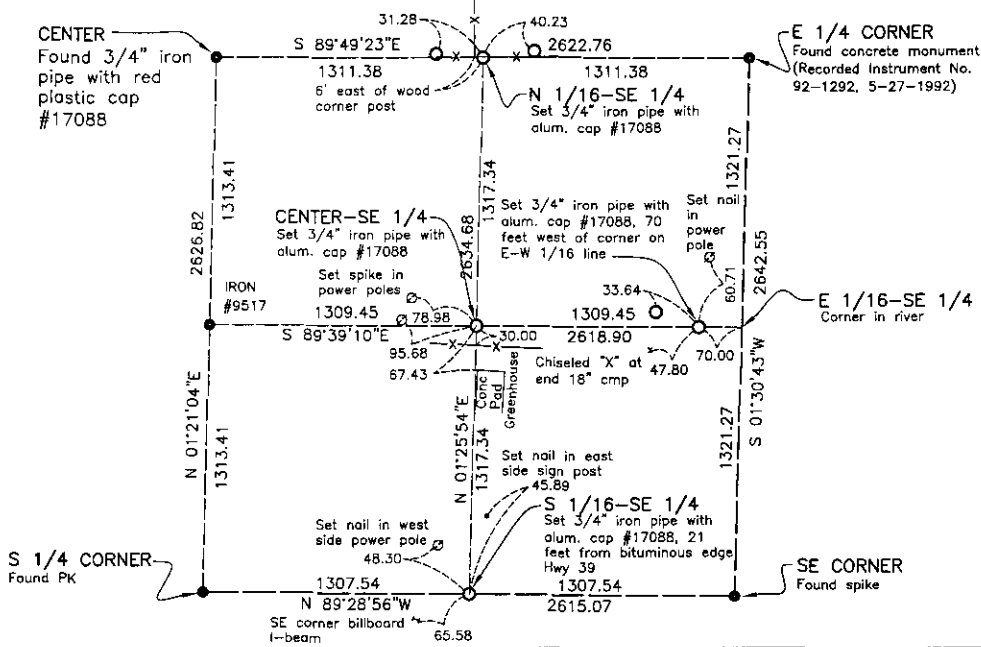
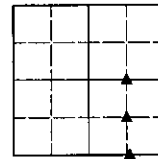
North 1/16 of SE 1/4 - Set 3/4" iron pipe with aluminum cap, #17088 at corner. Set 3/4" iron pipe reference monuments at the two tie positions.

East 1/16 of SE 1/4 - Set 3/4" iron pipe with aluminum cap, #17088, 70.00 feet west of corner on E-W 1/16 line. Set 3/4" iron pipe reference monument at tie position. Set nail in power pole and "x" end of cmp at tie positions.

South 1/16 of SE 1/4 - Set 3/4" iron pipe with aluminum cap, #17088 at corner. Set nails as reference monuments at two tie positions.

Center of SE 1/4 - Set 3/4" iron pipe with aluminum cap, #17088 at corner. Set spike in power poles at tie positions.

These corners were used for a survey in this section for Wal-Mart Stores, Inc.



I hereby certify that this land surveying document was prepared and the related surveying work was performed by me or under my direct supervision and that I am a duly licensed Land Surveyor under the laws of the State of Iowa.

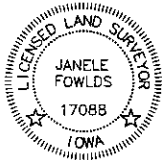
CORNER INDEXED

Corner: N 1/16 of SE 1/4  
E 1/16 of SE 1/4  
S 1/16 of SE 1/4  
Center of SE 1/4

Section: 3  
Township: 83  
Range: 39

*Janele Fowlds* 4-21-09  
Date

Janele Fowlds, PLS  
License No. 17088  
My License Renewal Date is December 31, 2009  
Pages or sheets covered by this seal: 1



**BOLTON & MENK, INC.**  
Consulting Engineers & Surveyors

1960 PREMIER DRIVE, MANKATO, MN 56001 (507) 625-4171  
MANKATO, MN FAIRMONT, MN SLEEPY EYE, MN BURNSVILLE, MN  
WILLMAR, MN CHASKA, MN RAMSEY, MN AMES, IA

I:\WALM\M1538295\CAD\SEC 3\_COR\_CERT.DWG 04-20-2009 3:08p.m.