

INDEXED *me*
 FILED UP *me*
 PROOFED *me*
 SCAINED *me*

COPY

Crawford County Recorder
 Denise Meeves
Fee Book 2009-1147
 04/24/2009 @10:35AM
 PLC PLAT CORNER CER
 Book: Page: # Pages: 1
 Total Fees: \$7.00

PREPARED BY JANELE FOWLDS, PLS BOLTON & MENK, INC. 1960 PREMIER DRIVE MANKATO, MINNESOTA 56001 (507) 625-4171

UNITED STATES PUBLIC LAND SURVEY CORNER CERTIFICATE
OF

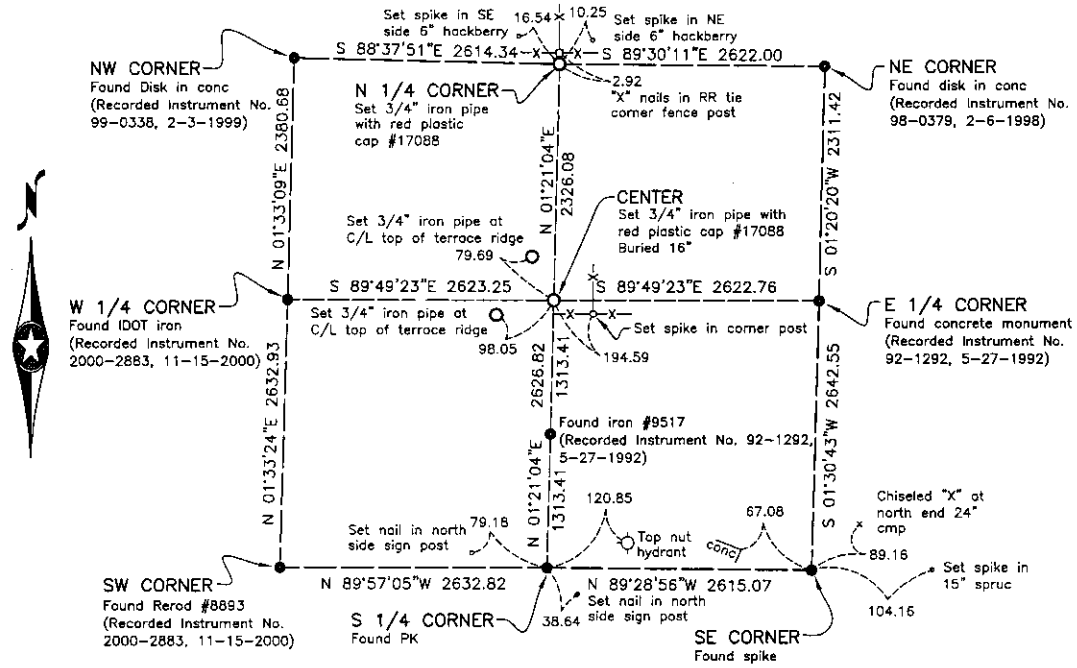
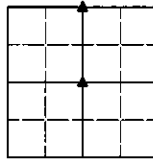
Land Survey Monuments situated in Section 3, Township 83 North, Range 39 West of the Fifth Principal Meridian, Crawford County, Iowa. Previously recorded in _____ (not recorded) _____ in County Recorder's Office.

Monument Description and Remarks:

Center - Set 3/4" iron pipe with red plastic cap, #17088 at corner. Set 3/4" iron pipe reference monuments at two tie positions. Set spike in trees at tie position.

North 1/4 - Set 3/4" iron pipe with red plastic cap, #17088 at corner. Set spike in trees at tie positions.

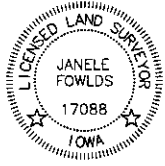
This corner was used for a survey in this section for Wal-Mart Stores, Inc.



I hereby certify that this land surveying document was prepared and the related surveying work was performed by me or under my direct supervision and that I am a duly licensed Land Surveyor under the laws of the State of Iowa.

Janele Fowlds 4-21-09

Janele Fowlds, PLS Date
 License No. 17088
 My License Renewal Date is December 31, 2009
 Pages or sheets covered by this seal: 1



BOLTON & MENK, INC.
 Consulting Engineers & Surveyors
 1960 PREMIER DRIVE, MANKATO, MN 56001 (507) 625-4171
 MANKATO, MN FAIRMONT, MN SLEEPY EYE, MN BURNSVILLE, MN
 WILLMAR, MN CHASKA, MN RAMSEY, MN AMES, IA

CORNER INDEXED

Corner: CENTER
 N 1/4
 Section: 3
 Township: 83
 Range: 39

C:\CAD\BACKUP\SEC 3_COR_CERT.DWG 04-01-2009 3:14p.m.