

INDEXED  
FOLLOW UP  
PROOFED  
SCANNED

WILKE LAND SURVEYING INC. 401 1800th Street Panama, Iowa 51562 (712)489-2898

# UNITED STATES PUBLIC LAND SURVEY CORNER CERTIFICATE

SECTION 36 TOWNSHIP 83N RANGE 39W COUNTY CRAWFORD

Monument Description and Remarks:

Certificate Prepared For: (No record Certificates)

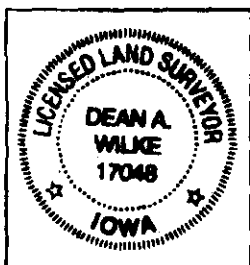
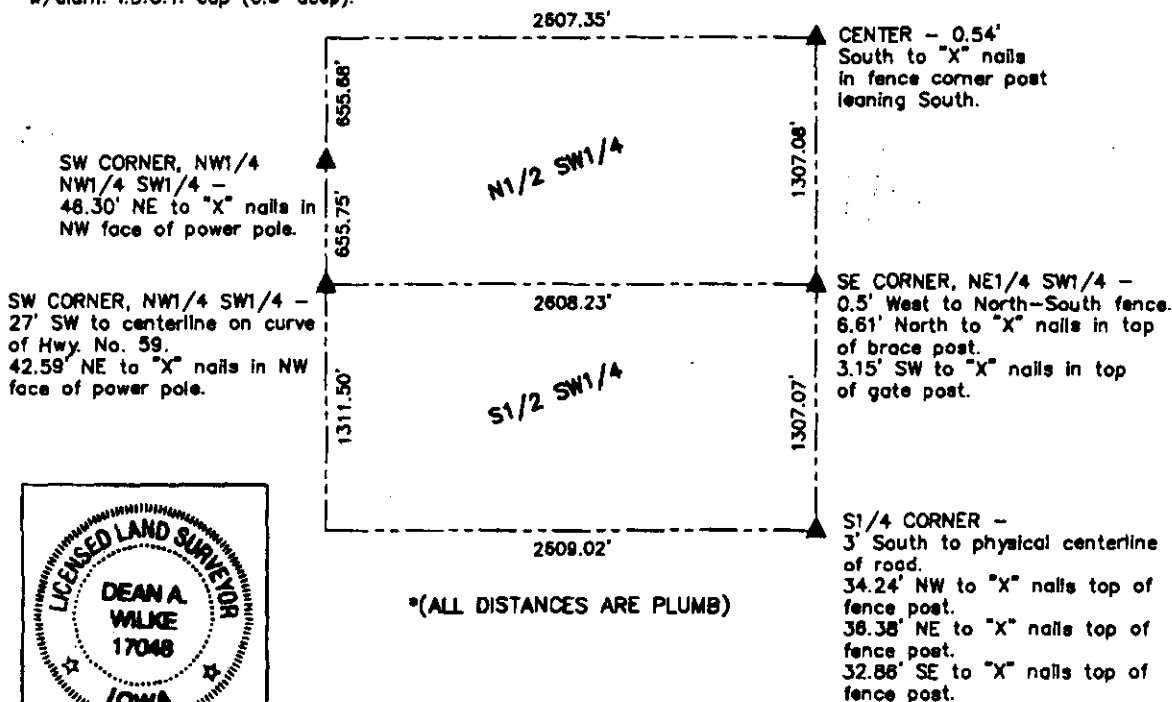
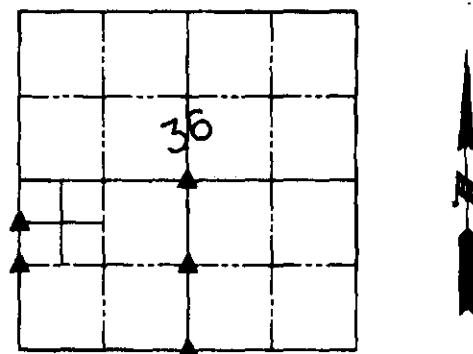
CENTER - Set 5/8" dia. by 24" rebar w/orange cap PLS #17048 (exposed 0.1') on the North side of an old fence corner post leaning South with property fences extending South, East, and West, after checking to see how an intersection of lines from opposite 1/4 Section corners compared to the property fence corner.

SE Corner, NE1/4 SW1/4 - Set 5/8" dia. by 24" rebar w/orange cap PLS #17048 (exposed 0.2') at the midpoint of the East line of the SW1/4 of Section.

S1/4 Corner - Found 5/8" dia. rebar (0.4' deep) over broken off C.M.

SW Corner, NW1/4 SW1/4 - Set 5/8" dia. by 24" rebar (0.3' deep) on line at a proportional distance between the found SW Corner of Section and the found SW Corner of the NW1/4 NW1/4 SW1/4 of Section, being an iron pin w/alum. I.D.O.T. cap.

SW Corner, NW1/4 NW1/4 SW1/4 - Found iron pin w/alum. I.D.O.T. cap (0.3' deep).



I hereby certify that this land surveying document was prepared and the related survey work was performed by me or under my direct personal supervision and that I am a duly licensed Land Surveyor under the laws of the State of Iowa.

*Dean A. Wilke* 2/07/11  
Dean A. Wilke Date

License number 17048

My license renewal date is December 31, 2011

Pages or sheets covered by this seal: This page only

List Corners to be Indexed			
Corner	Section	Twp.	Range
CENTER	36	83N	39W
SE CORNER			
NE1/4 SW1/4	36	83N	39W
S1/4 CORNER	36	83N	39W
SW CORNER			
NW1/4 SW1/4	36	83N	39W
SW COR., NW1/4			
NW1/4 SW1/4	36	83N	39W