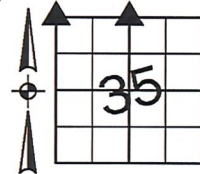


Denise Meeves RECORDER
 Crawford County, Iowa
 Instr. Number: 2018-1770
 Recorded: 8/30/2018 at 3:32:55.0 PM
 Pages 1
 Fee Amount: \$7.00
 Revenue Tax:

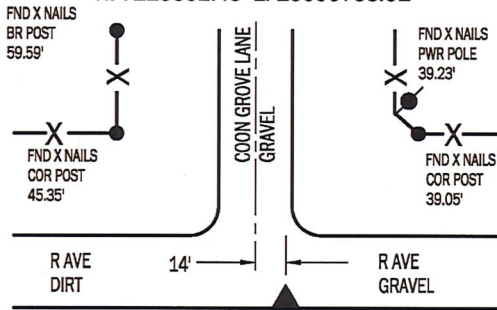
PREPARED BY AND RETURN TO: MIKE SCHULTE, SCHULTE SURVEYING, INC., 2003 390TH STREET, WESTSIDE, IA 51467 (712) 790-3489

UNITED STATES PUBLIC LAND SURVEY CORNER CERTIFICATE OF
 LAND SURVEY MONUMENTS SITUATED IN SECTION 35, TOWNSHIP 83 NORTH, RANGE 39 WEST, OF THE FIFTH
 PRINCIPAL MERIDIAN, CRAWFORD COUNTY, IOWA. PREVIOUSLY RECORDED IN SEE BELOW IN COUNTY
 RECORDER'S OFFICE. (book, page instrument number)



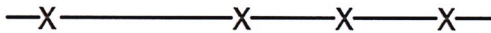
NW CORNER

FND 3/4" REBAR SET 5/8" REBAR WITH YPC 17979
 N: 7225352.45 E: 16600753.01

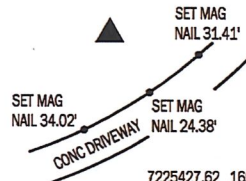


N1/4 CORNER

FND C.M.
 N: 7225434.87 E: 16603373.77



NO RECORDED TIES FOUND. USED COUNTY ENGINEER'S TIES TO FIND 3/4" REBAR AT SOUTH EDGE OF ROAD. TIES FIT VERY WELL SO MONUMENT WAS ACCEPTED. PULLED ON THE BAR AND FOUND IT WAS LOOSE AND ONLY 1' LONG. REPLACED 3/4" REBAR WITH 5/8" X 2' REBAR WITH YPC 17979.

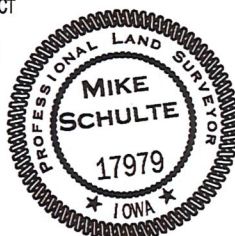


7225427.62	16603404.32	1270.0
7225414.67	16603387.43	1274.8
7225401.97	16603365.07	1280.1

USED TIES RECORDED IN INST 96-3386 TO FIND CONCRETE MONUMENT. I DIDN'T FIND THE TIES TO THE TREES, BUT THE SIGNS WERE OBVIOUS AND MADE FINDING THE MONUMENT EASY. RETIING THE CORNER DUE TO CHANGES IN THE TIE POINTS.

I HEREBY CERTIFY THAT THIS LAND SURVEYING DOCUMENT WAS PREPARED BY ME OR UNDER MY DIRECT PERSONAL SUPERVISION AND THAT I AM A DULY LICENSED PROFESSIONAL LAND SURVEYOR UNDER THE LAWS OF THE STATE OF IOWA.

Mike Schulte
 MIKE SCHULTE
 DATE: 2018/08/30
 LICENSE NUMBER: 17979
 LICENSE RENEWAL DATE IS DECEMBER 31, 2019
 PAGES COVERED BY THIS SEAL: 1 OF 1



*All distances are measured horizontally unless noted.

LIST CORNERS TO BE INDEXED

CORNER	SECTION	TWP	RANGE
N1/4 COR	35	83	39
S1/4 COR	26	83	39
NW COR	35	83	39
SW COR	26	83	39
SE COR	27	83	39
NE COR	34	83	39

BASIS OF BEARING

laRCS ZONE 6 - US SURVEY FEET
 laRTN DERIVED - NAD83(2011)(EPOCH 2010.00)

SCHULTE SURVEYING, INC.

DRAWN BY: MLS
 PROJ NUMBER: 18-043