

INDEXED DM/DM  
 FOLLOW UP DM  
 PROOFED SM  
 SCANNED DM

Instrument #: 2021-1227  
 06/04/2021 09:29:34 AM Total Pages: 1  
 PLC PLAT COR CERT  
 Recording Fee: \$0.00 Transfer Tax: \$0  
 Denise Meeves, Recorder, Crawford County Iowa



PREPARED BY: PAUL ASSMAN-CRAWFORD COUNTY ENGINEER'S OFFICE-COURTHOUSE-DENISON, IA.-712-263-2449

## UNITED STATES PUBLIC LAND SURVEY CORNER CERTIFICATE OF

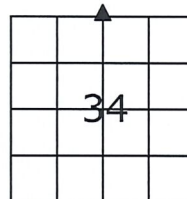
LAND SURVEY MONUMENT SITUATED IN DENISON TOWNSHIP, THE NORTH 1/4 CORNER OF SECTION 34, T-83N,  
R-39W OF THE FIFTH P.M. CRAWFORD COUNTY, IOWA.

PREVIOUSLY RECORDED IN THE DENISON TWP FIELD BOOK PAGE 68, COUNTY ENGINEER'S OFFICE

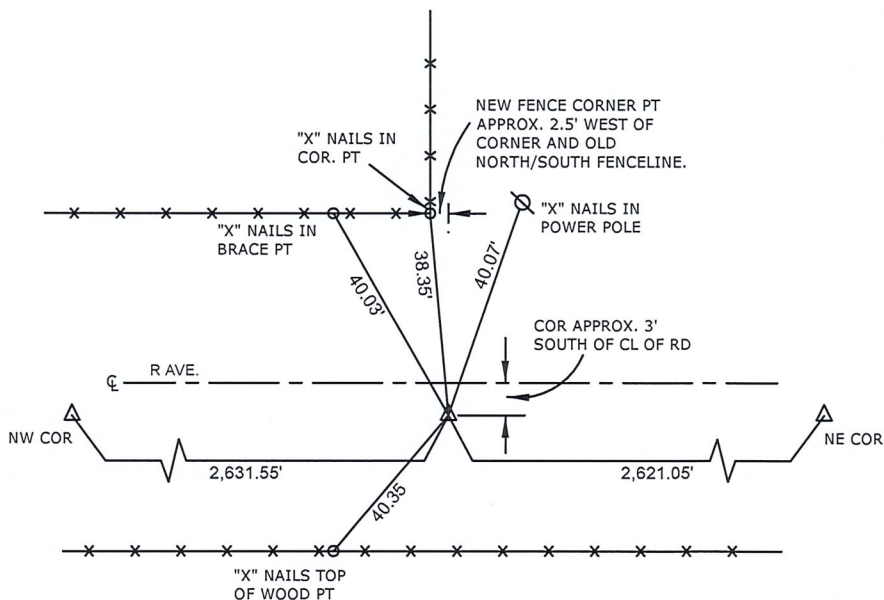
### MONUMENT DESCRIPTION AND REMARKS

NORTH 1/4 CORNER SEC. 34-83-39

NO CORNER FOUND UPON INITIAL SURVEY. COUNTY GRADED ROAD AND REESTABLISHED CORNER ON LINE WITH THE NORTHWEST AND NORTHEAST CORNERS AND IN LINE WITH OLD FENCE GOING NORTH. DISTANCE TO OLD FENCES MATCHED PREVIOUS TIE DISTANCES. THE CORNER POST OF THE NEW INSTALLED FENCE LIES APPROX. 2.5' WEST OF OLD FENCE LINE. SET 5/8" REBAR WITH RED CAP #11982 1.9' DEEP AND RETIED CORNER.



NORTH 1/4 CORNER SEC. 34-83-39



ALL DISTANCES ARE SLOPE CHAINED

**CERTIFICATION:**

I HEREBY CERTIFY THAT THIS LAND SURVEYING DOCUMENT WAS PREPARED AND THE RELATED SURVEY WORK WAS PERFORMED BY ME OR UNDER MY DIRECT PERSONAL SUPERVISION AND THAT I AM A DULY LICENSED LAND SURVEYOR UNDER THE LAWS OF THE STATE OF IOWA.

*Paul J. Assman*  
 Signature

*5/27/21*  
 Date of Survey

PAUL J. ASSMAN  
 Typed Name

11982  
 L.S. No.

12-31-22  
 License Renewal Date

Pages covered by this seal 1

