

STATE OF IOWA  
DENISON COUNTY

INDEXED  
FOLLOW UP  
PROCESSED

2001 DE 21 AM 9:14

2001-3687

INST. NO.  
DENISE MEEVES, RECORDER

Denise Meeves  
FEE #6 Mary Eiten, Deputy

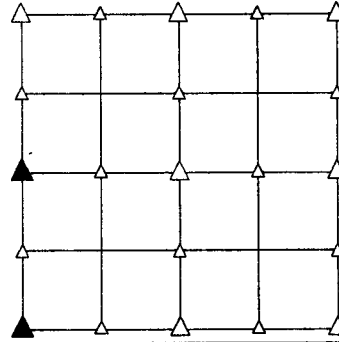
PREPARED BY - TERENCE E. CRAWFORD - SUNDBRIST ENGINEERING - 120 S. MAIN, DENISON, IOWA 51442 - PHONE (712)263-8118

# UNITED STATES PUBLIC LAND SURVEY CORNER CERTIFICATE OF

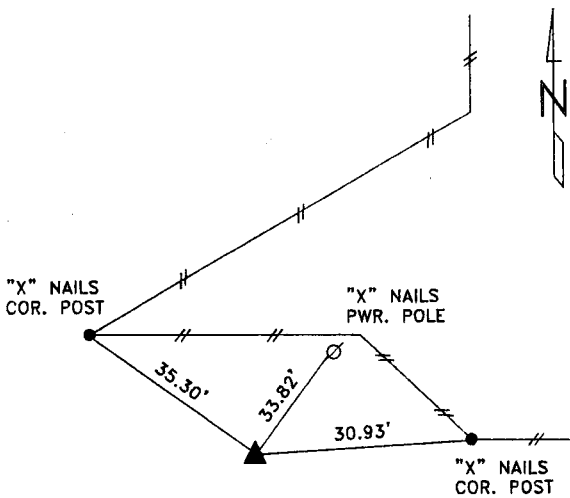
LAND SURVEY MONUMENT SITUATED IN SECTION 23, T 83 N, R 39 W OF  
THE 5TH P.M., CRAWFORD COUNTY, IOWA.  
PREVIOUSLY RECORDED IN BOOK \_\_\_\_\_, PAGE \_\_\_\_\_, OTHER \_\_\_\_\_

## MONUMENT DESCRIPTION AND REMARKS

W1/4 CORNER - FOUND 1/2" DIA. IRON PIN 1.0' DEEP W/YELLOW  
STEEL POST ON SOUTH SIDE.  
SW CORNER - FOUND CM 0.1' DEEP.

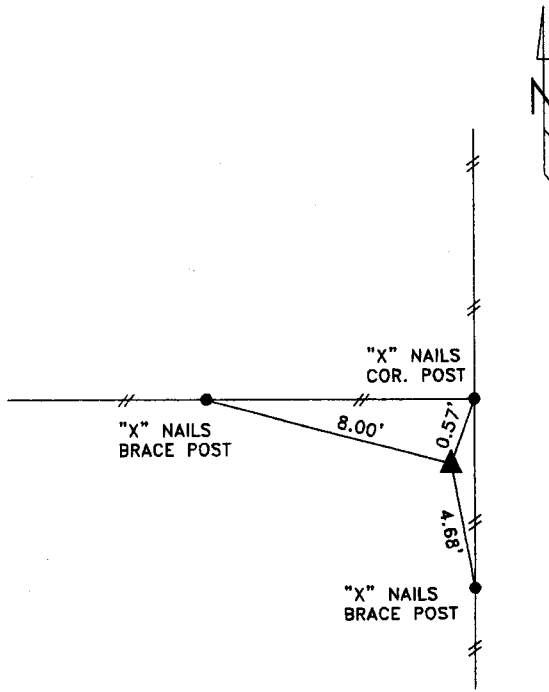


## PLAN VIEW SHOWING RELATIVE LOCATION OF MONUMENT AND REFERENCE POINTS.



DISTANCES SLOPE CHAINED

W1/4 CORNER SECTION 23-83-39



DISTANCES PLUMB CHAINED

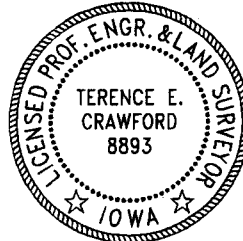
SW CORNER SECTION 23-83-39

I HEREBY CERTIFY THAT THIS LAND SURVEYING DOCUMENT WAS PREPARED  
AND THE RELATED SURVEY WORK WAS PERFORMED BY ME OR UNDER  
MY DIRECT SUPERVISION AND THAT I AM A DULY LICENSED LAND  
SURVEYOR UNDER THE LAWS OF THE STATE OF IOWA.

*Terence E. Crawford* DEC 06 2001  
TERENCE E. CRAWFORD DATE

IA LICENSE NO. 8893

EXP. DATE DECEMBER 31, 2001



SE PROJECT NO. 26001  
DRAWN BY: LLL