


INDEXED DM/DM  
 FOLLOW UP DM  
 PROOFED DM  
 SCANNED DM

**Instrument #: 2021-1226**  
 06/04/2021 09:29:34 AM Total Pages: 1  
 PLC PLAT COR CERT  
 Recording Fee: \$0.00 Transfer Tax: \$0  
 Denise Meeves, Recorder, Crawford County Iowa



PREPARED BY: PAUL ASSMAN-CRAWFORD COUNTY ENGINEER'S OFFICE-COURTHOUSE-DENISON, IA.-712-263-2449

## UNITED STATES PUBLIC LAND SURVEY CORNER CERTIFICATE OF

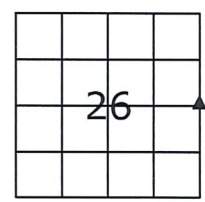
LAND SURVEY MONUMENT SITUATED IN DENISON TOWNSHIP, THE EAST 1/4 CORNER OF SECTION 26, T-83N,  
R-39W OF THE FIFTH P.M. CRAWFORD COUNTY, IOWA.

PREVIOUSLY RECORDED IN DENISON TWP FIELD BOOK PAGE 52, COUNTY ENGINEER'S OFFICE

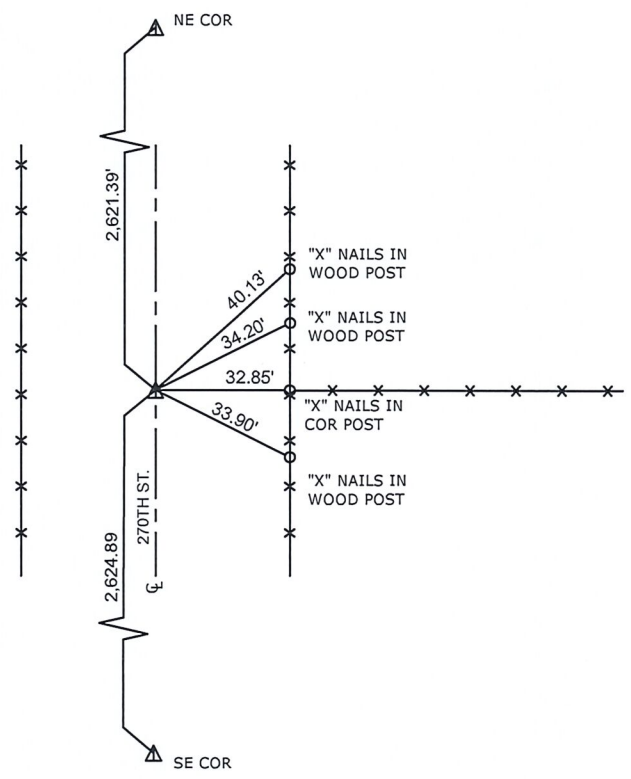
### MONUMENT DESCRIPTION AND REMARKS

EAST 1/4 CORNER SEC. 26-83-39

NO CORNER FOUND UPON INITIAL SURVEY. FOUND THREE GOOD EXISTING TIES AND RECORDED THE LOCATIONS OF THE TIES. CORNER LOCATION REESTABLISHED USING TIE DISTANCES. COUNTY GRADED ROAD AND RESET 5/8" REBAR WITH RED CAP #11982 1.3' DEEP AND RETIED CORNER.



EAST 1/4 CORNER SEC. 26-83-39



ALL DISTANCES ARE SLOPE CHAINED

**CERTIFICATION:**

I HEREBY CERTIFY THAT THIS LAND SURVEYING DOCUMENT WAS PREPARED AND THE RELATED SURVEY WORK WAS PERFORMED BY ME OR UNDER MY DIRECT PERSONAL SUPERVISION AND THAT I AM A DULY LICENSED LAND SURVEYOR UNDER THE LAWS OF THE STATE OF IOWA.

  
 Signature

5/27/21  
 Date of Survey

PAUL J. ASSMAN                      11982                      12-31-22  
 Typed Name                      L.S. No.                      License Renewal Date

Pages covered by this seal 1

