

RECORDED  
 FILED  
 INDEXED  
 2001 DE 21 AM 9:17  
 DIST. NO. 2001-3690  
 DENISE MEEVES, RECORDER  
 Denise Meeves  
 FEE \$6.00 Mary Eiten, Deputy

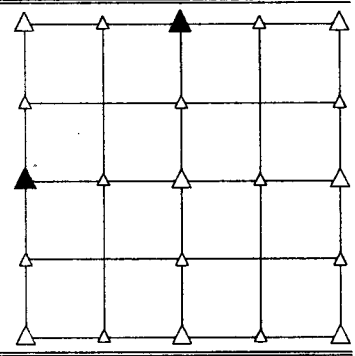
PREPARED BY - TERENCE E. CRAWFORD - SUNDQUIST ENGINEERING - 120 S. MAIN, DENISON, IOWA 51442 - PHONE (712)263-8118

## UNITED STATES PUBLIC LAND SURVEY CORNER CERTIFICATE OF

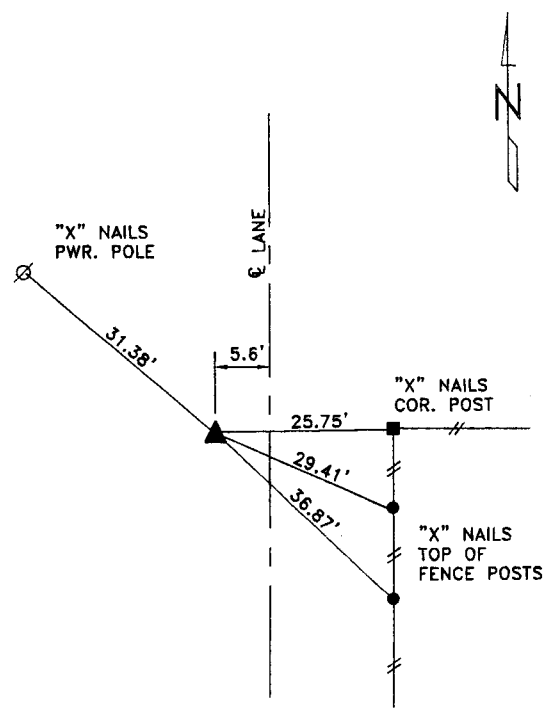
LAND SURVEY MONUMENT SITUATED IN SECTION 24, T 83 N, R 39 W OF  
 THE 5TH P.M., CRAWFORD COUNTY, IOWA.  
 PREVIOUSLY RECORDED IN BOOK \_\_\_\_\_, PAGE \_\_\_\_\_, OTHER \_\_\_\_\_

### MONUMENT DESCRIPTION AND REMARKS

W1/4 CORNER - SET 5/8" DIA. X 18" IRON PIN W/YELLOW CAP #8893, 0.5' DEEP, SET ON LINE AND AT SPLIT BETWEEN NW COR. & SW COR. OF SEC. 24.  
 N1/4 CORNER - FOUND 5/8" DIA. IRON PIN W/CAP #5796 0.3' ABOVE GROUND.

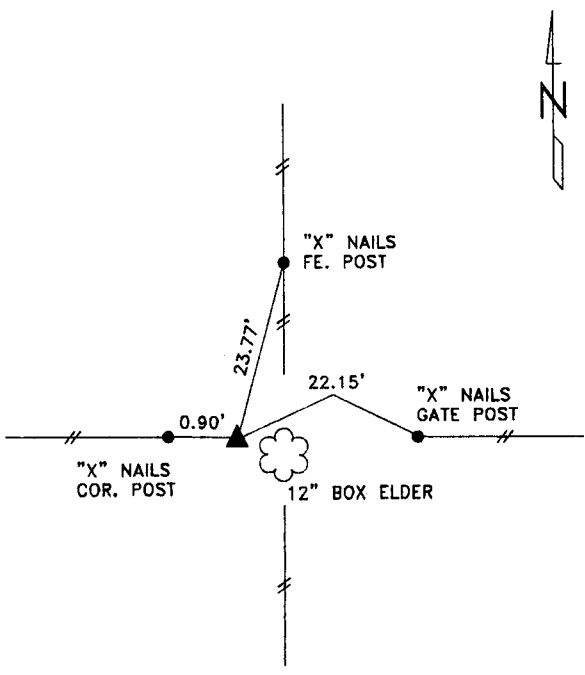


### PLAN VIEW SHOWING RELATIVE LOCATION OF MONUMENT AND REFERENCE POINTS.



DISTANCES SLOPE CHAINED

W1/4 CORNER SECTION 24-83-39



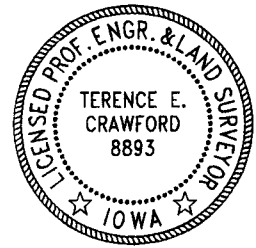
DISTANCES SLOPE CHAINED

N1/4 CORNER SECTION 24-83-39

I HEREBY CERTIFY THAT THIS LAND SURVEYING DOCUMENT WAS PREPARED AND THE RELATED SURVEY WORK WAS PERFORMED BY ME OR UNDER MY DIRECT SUPERVISION AND THAT I AM A DULY LICENSED LAND SURVEYOR UNDER THE LAWS OF THE STATE OF IOWA.

*Terence E. Crawford*  
 TERENCE E. CRAWFORD  
 IA LICENSE NO. 8893

DEC 06 2001  
 DATE  
 EXP. DATE DECEMBER 31, 2001



SE PROJECT NO. 26001  
 DRAWN BY: LLL