

FILED IN PUBLIC RECORDS
ON DECEMBER 21, 2001

2001 DE 21 AM 9:13

2001-3686

REGISTERED
DEWISOR, ILLINOIS RECORDER

Denise Melves
Mary Giken, Deputy

FILED BY
PROCESSED

PREPARED BY - TERENCE E. CRAWFORD - SUNDQUIST ENGINEERING - 120 S. MAIN, DENISON, IOWA 51442 - PHONE (712)263-8118

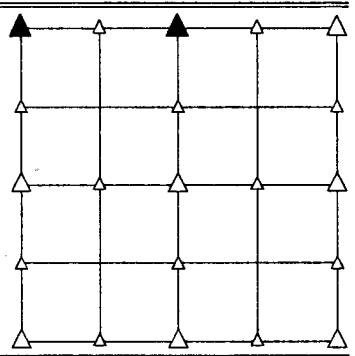
UNITED STATES PUBLIC LAND SURVEY CORNER CERTIFICATE OF

LAND SURVEY MONUMENT SITUATED IN SECTION 23, T 83 N, R 39 W OF
THE 5TH P.M., CRAWFORD COUNTY, IOWA.
PREVIOUSLY RECORDED IN BOOK _____, PAGE _____, OTHER _____

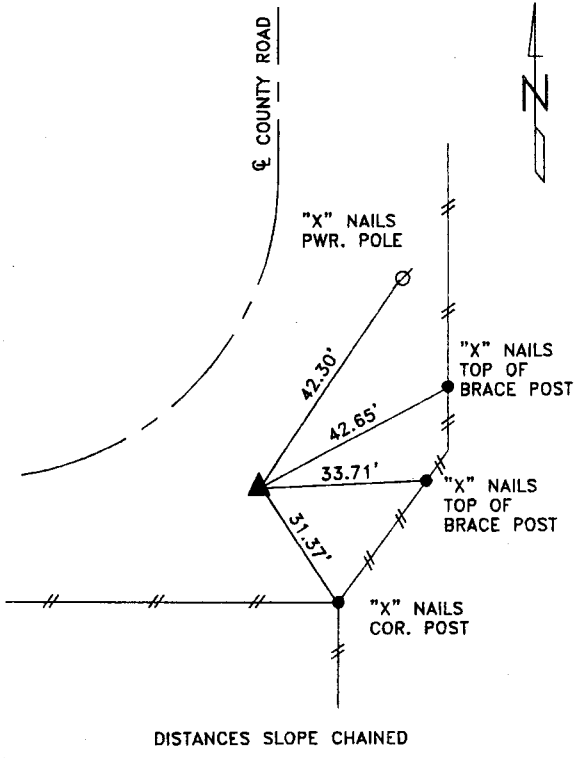
MONUMENT DESCRIPTION AND REMARKS

NW CORNER - FOUND CM 8" DEEP NEXT TO ORANGE STEEL SIGN
POST 3.0' TALL.

N1/4 CORNER - FOUND WOOD CORNER POST WITH REDHEAD IN TOP,
AS USED ON PREVIOUS SURVEYS AS THE ACCEPTED
CORNER POSITION. SET 5/8" DIA. X 18" IRON PIN
W/YELLOW CAP #8893 FLUSH, SET ON SOUTH SIDE
OF CORNER POST.

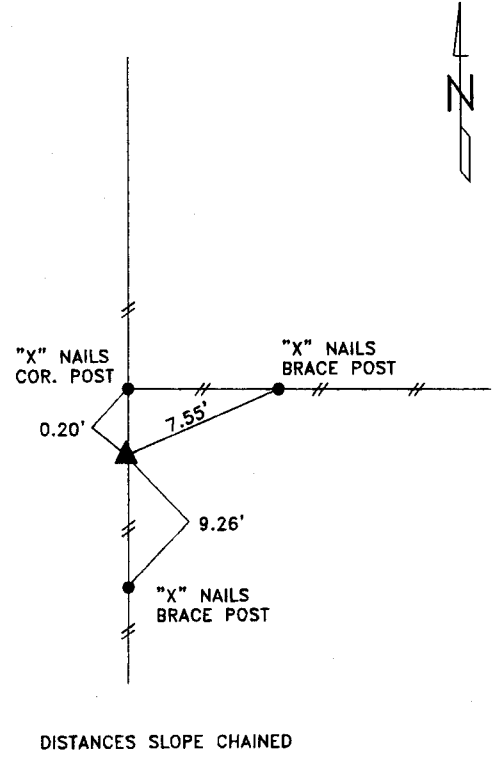


PLAN VIEW SHOWING RELATIVE LOCATION OF MONUMENT AND REFERENCE POINTS.



DISTANCES SLOPE CHAINED

NW CORNER SECTION 23-83-39



DISTANCES SLOPE CHAINED

N1/4 CORNER SECTION 23-83-39

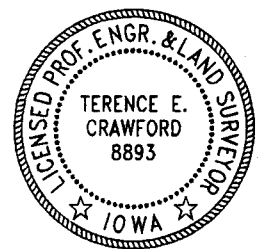
I HEREBY CERTIFY THAT THIS LAND SURVEYING DOCUMENT WAS PREPARED
AND THE RELATED SURVEY WORK WAS PERFORMED BY ME OR UNDER
MY DIRECT SUPERVISION AND THAT I AM A DULY LICENSED LAND
SURVEYOR UNDER THE LAWS OF THE STATE OF IOWA.

Terence E. Crawford

DEC 06 2001

TERENCE E. CRAWFORD
IA LICENSE NO. 8893

DATE
EXP. DATE DECEMBER 31, 2001



SE PROJECT NO. 26001
DRAWN BY: LLL