

INDEXED
 FOLLOW UP
 PROCESSED
 SCANNED



Crawford County Recorder Denise Meeves
 Fee Book 2007-0098 REC013119
 01/10/2007 @1003AM # Pages 1
 PLC PLAT CORNER CER
 Total Fees: \$7.00

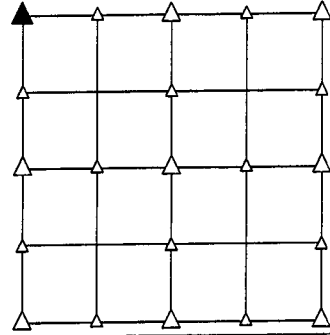
PREPARED BY - TERENCE E. CRAWFORD - SUNDQUIST ENGINEERING - 120 S. MAIN, DENISON, IOWA 51442 - PHONE (712) 263-8118

UNITED STATES PUBLIC LAND SURVEY CORNER CERTIFICATE OF

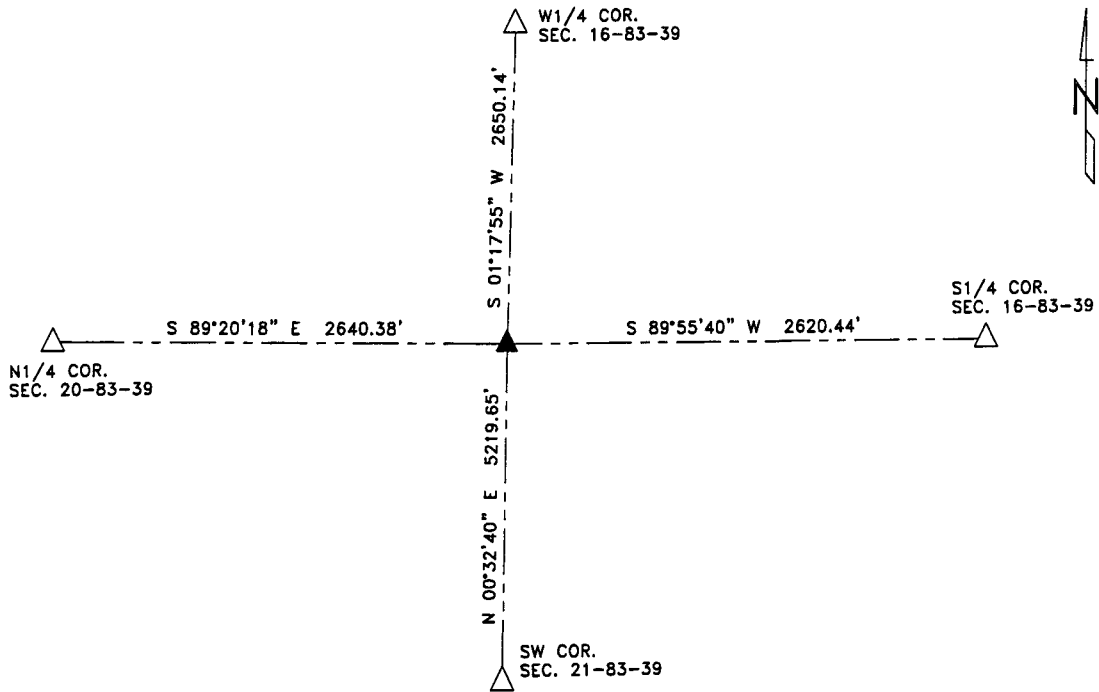
LAND SURVEY MONUMENT SITUATED IN SECTION 21, T 83 N, R 39 W OF
 THE 5TH P.M., CRAWFORD COUNTY, IOWA.
 PREVIOUSLY RECORDED IN BOOK , PAGE , OTHER

MONUMENT DESCRIPTION AND REMARKS

NW CORNER - SET 5/8" DIA. X 18" IRON PIN W/YELLOW CAP
 #8893 2.0' DEEP, SET WITH LOCAL EVIDENCE AND
 SURROUNDING SECTION CORNERS.



PLAN VIEW SHOWING RELATIVE LOCATION OF MONUMENT AND REFERENCE POINTS.



DISTANCES PLUMB CHAINED
 NW CORNER SECTION 21-83-39

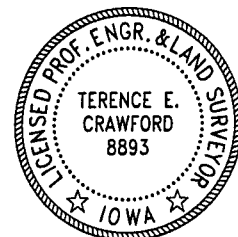
I HEREBY CERTIFY THAT THIS LAND SURVEYING DOCUMENT WAS PREPARED
 AND THE RELATED SURVEY WORK WAS PERFORMED BY ME OR UNDER MY
 DIRECT PERSONAL SUPERVISION AND THAT I AM A DULY LICENSED LAND
 SURVEYOR UNDER THE LAWS OF THE STATE OF IOWA.

Terence E. Crawford

DEC 18 2006

TERENCE E. CRAWFORD
 IA LICENSE NO. 8893

DATE
 EXP. DATE DECEMBER 31, 2007



SE PROJECT NO. 25506
 DRAWN BY: LLL