

1999 DE 13 AM 11:39

INDEXED
FOLLOW UP
PROOFED

INST. NO. **99-3323**
DENISE MEEVES, RECORDER
Denise Meeves
FEE \$16.00
Mary Gitten, Deputy

This document prepared by: Semke & Associates 712-792-2276
Michael G. Semke, L.S.#10318 - 608 N. Court St., Carroll, Iowa

UNITED STATES PUBLIC LAND SURVEY CORNER CERTIFICATE
OF

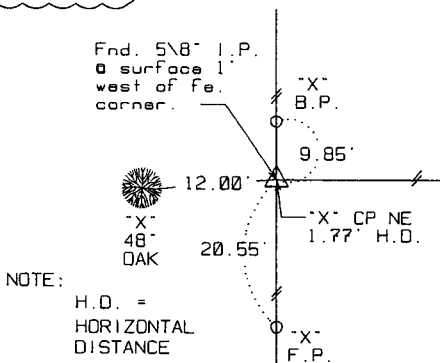
Land Survey Monuments situated in Section 19, Township 83, Range 39, of the Fifth Principal Meridian, Crawford County, Iowa. Previously recorded in _____ in County Recorder's Office.
(book, page, document number, etc.)

(Show reason for preparing this certificate, the evidence and detailed procedures used in establishing the corner positions and monumentation found or placed.)

PLAN - VIEW

(Show a minimum of three reference ties to durable physical objects, relevant monuments and physical conditions that will enable recovery of the corner.)

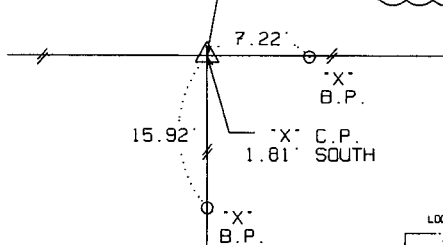
E 1/4 COR
19-83-39



NOTE:

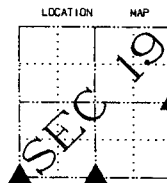
H.D. = HORIZONTAL DISTANCE

Fnd. 1/2" I.P.
2" deep, 2.0"
North of C.P.



NOTE: ALL TIES THIS CORNER ARE HORIZONTAL DISTANCES

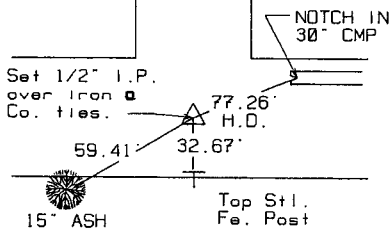
S 1/4 COR
19-83-39



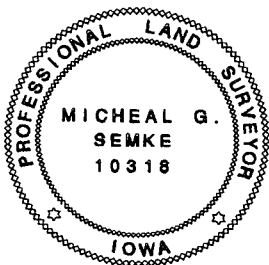
SW COR
19-83-39

NOTE:

H.D. = HORIZONTAL DISTANCE



Note: All ties slope chained unless noted.



I HEREBY CERTIFY THAT THIS CORNER CERTIFICATE WAS PREPARED BY ME OR UNDER MY DIRECT PERSONAL SUPERVISION AND THAT I AM A PROFESSIONAL LAND SURVEYOR UNDER THE LAWS OF THE STATE OF IOWA.

MY REGISTRATION IS SUBJECT TO RENEWAL 12-31-99.

DATE 12/16/99

Michael G. Semke
MICHAEL G. SEMKE, RLS NO 10318

List Corners to be Indexed

Corners	Section	Twp	Range
E 1/4	19	83	39
W 1/4	20	83	39
S 1/4	19	83	39
N 1/4	30	83	39
SW COR	19	83	39
SE COR	24	83	40
NE COR	25	83	40
NW COR	30	83	39