

INDEXED JP/HP
 FOLLOW UP JP
 PROOFED DM
 SCAINED my

Crawford County Recorder
 Denise Meeves
Fee Book 2010-0172 ✓
 01/28/2010 @10:03AM
 PLC PLAT CORNER CER # Pages: 1
 Book: Page: \$9.00
 Total Fees:

PREPARED BY - JOSEPH P. RUESCHENBERG - SUNDQUIST ENGINEERING - 120 S. MAIN, DENISON, IOWA 51442 - PHONE (712) 263-8118

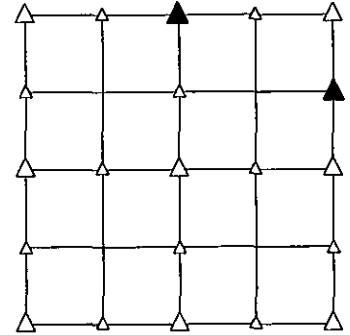
UNITED STATES PUBLIC LAND SURVEY CORNER CERTIFICATE OF

LAND SURVEY MONUMENT SITUATED IN SECTION 14, T 83 N, R 39 W OF
 THE 5TH P.M., CRAWFORD COUNTY, IOWA.
 PREVIOUSLY RECORDED IN BOOK _____, PAGE _____, OTHER _____

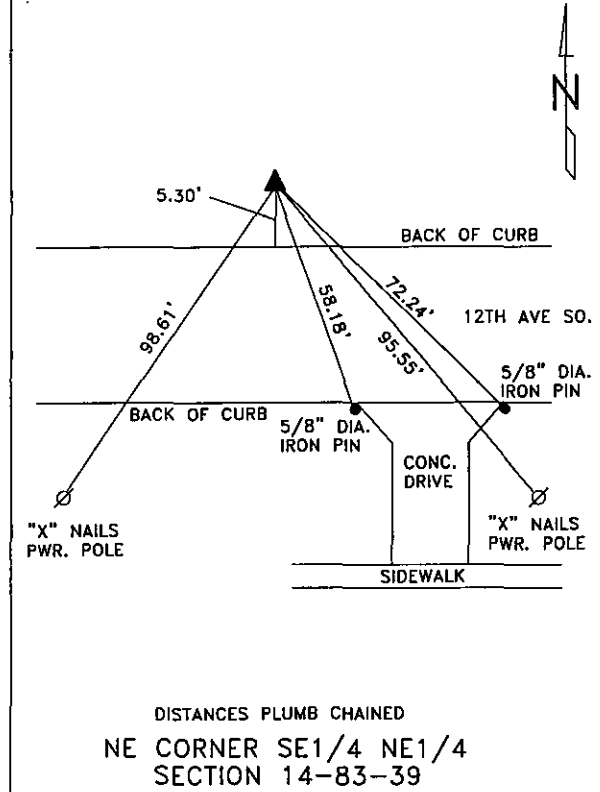
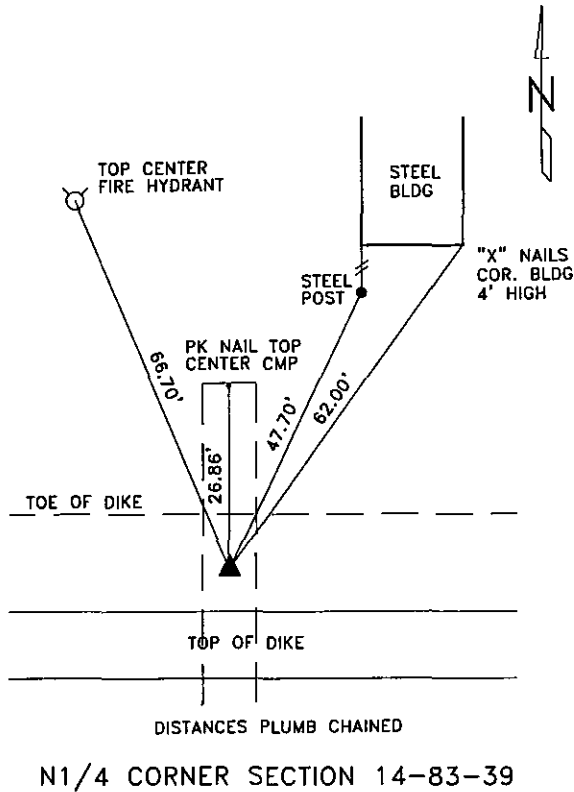
MONUMENT DESCRIPTION AND REMARKS

N1/4 CORNER - SET 5/8" DIA. X 18" IRON PIN W/ORANGE CAP #14709 0.4' DEEP, RESET FROM PREVIOUS SURVEY INFORMATION.

NE CORNER SE1/4 NE1/4 - SET 5/8" DIA. X 18" IRON PIN W/ORANGE CAP #14709 0.45' DEEP, RESET FROM PREVIOUS SURVEY INFORMATION.

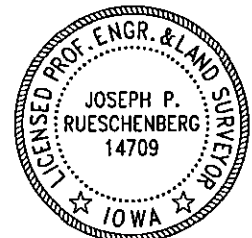


PLAN VIEW SHOWING RELATIVE LOCATION OF MONUMENT AND REFERENCE POINTS.



I HEREBY CERTIFY THAT THIS LAND SURVEYING DOCUMENT WAS PREPARED AND THE RELATED SURVEY WORK WAS PERFORMED BY ME OR UNDER MY DIRECT PERSONAL SUPERVISION AND THAT I AM A DULY LICENSED LAND SURVEYOR UNDER THE LAWS OF THE STATE OF IOWA.

Joseph P. Rueschenberg DEC 29 2009
 JOSEPH P. RUESCHENBERG DATE
 IA LICENSE NO. 14709 EXP. DATE DECEMBER 31, 2010



SE PROJECT NO. 23409
 DRAWN BY: LLL