

INDEXED AP
 FOLLOW UP AP
 PROCEED EM
 SCANNED zy

Crawford County Recorder
 Denise Meeves
Fee Book 2010-0171 ✓
 01/28/2010 @10:00AM
 PLC PLAT CORNER CER
 Book: Page: # Pages: 1
 Total Fees: \$9.00

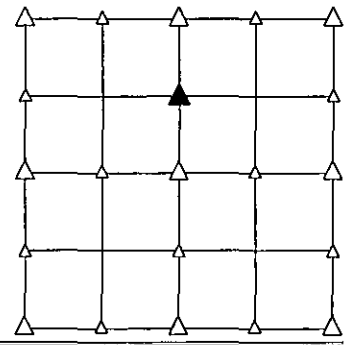
PREPARED BY - JOSEPH P. RUESCHENBERG - SUNDUQUIST ENGINEERING - 120 S. MAIN, DENISON, IOWA 51442 - PHONE (712) 263-8118

**UNITED STATES PUBLIC LAND SURVEY CORNER CERTIFICATE
 OF**

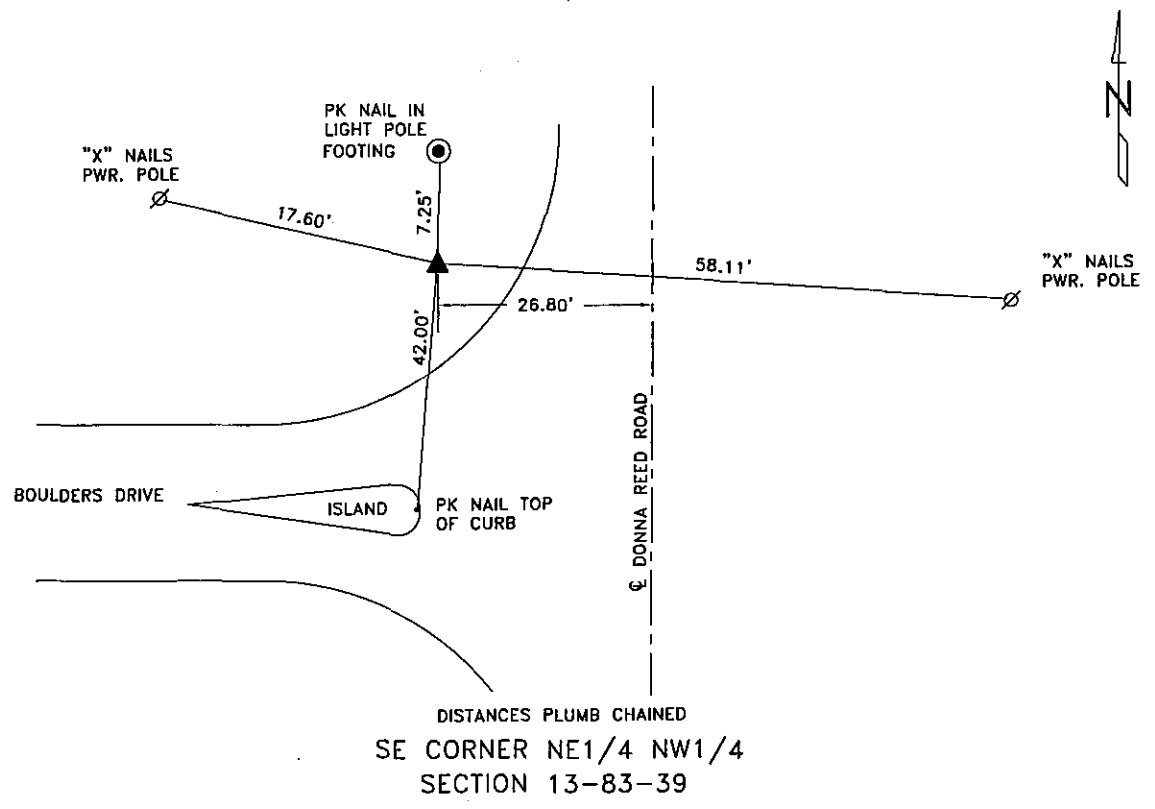
LAND SURVEY MONUMENT SITUATED IN SECTION 13, T 83 N, R 39 W OF
 THE 5TH P.M., CRAWFORD COUNTY, IOWA.
 PREVIOUSLY RECORDED IN BOOK , PAGE , OTHER

MONUMENT DESCRIPTION AND REMARKS

SE CORNER NE1/4 NW1/4 - SET 5/8" DIA. X 18" IRON PIN
 W/ORANGE CAP #14709 0.3' DEEP,
 RESET FROM PREVIOUS SURVEY
 INFORMATION.

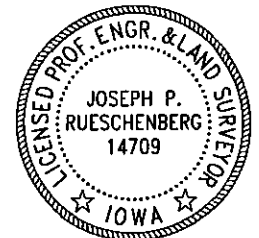


PLAN VIEW SHOWING RELATIVE LOCATION OF MONUMENT AND REFERENCE POINTS.



I HEREBY CERTIFY THAT THIS LAND SURVEYING DOCUMENT WAS PREPARED
 AND THE RELATED SURVEY WORK WAS PERFORMED BY ME OR UNDER MY
 DIRECT PERSONAL SUPERVISION AND THAT I AM A DULY LICENSED LAND
 SURVEYOR UNDER THE LAWS OF THE STATE OF IOWA.

Joseph P. Rueschenberg
 JOSEPH P. RUESCHENBERG DATE DEC 29 2009
 IA LICENSE NO. 14709 EXP. DATE DECEMBER 31, 2010



SE PROJECT NO. 23409
 DRAWN BY: LLL