

Instrument #: 2015-0279  
02/18/2015 08:26:39 AM Total Pages: 1  
PLC PLAT CORNER CER  
Recording Fee: \$7.00 Transfer Tax: \$0  
Denise Heaves, Recorder, Crawford County Iowa



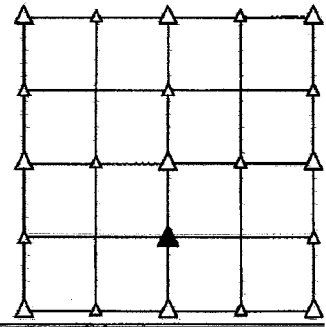
PREPARED BY - JOSEPH P. RUESCHENBERG - SUNDQUIST ENGINEERING - 120 S. MAIN, DENISON, IOWA 51442 - PHONE (712) 263-8118

### UNITED STATES PUBLIC LAND SURVEY CORNER CERTIFICATE OF

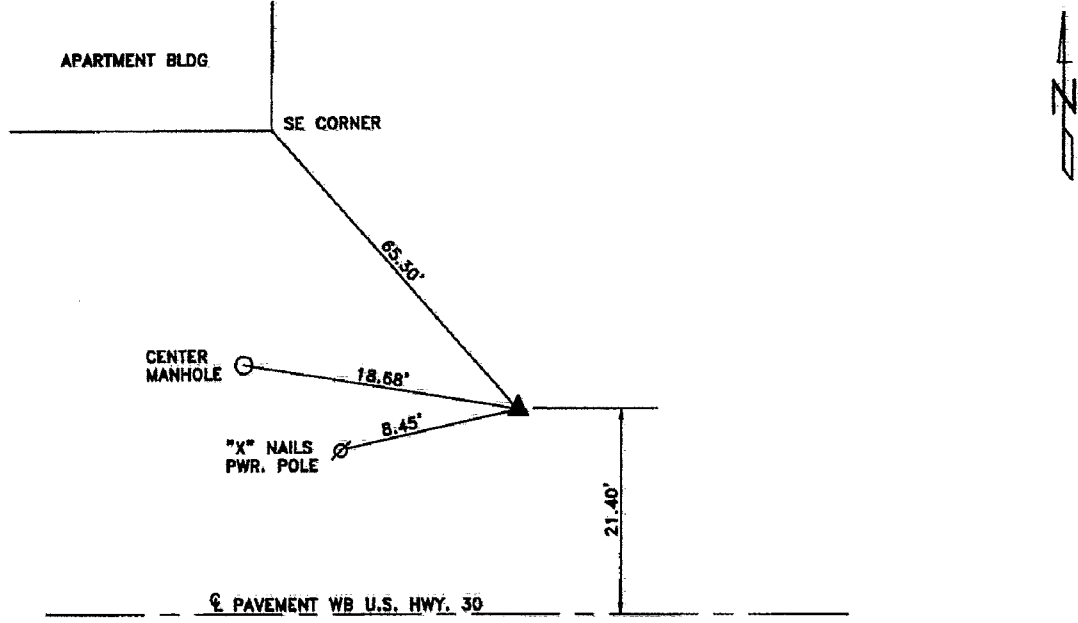
LAND SURVEY MONUMENT SITUATED IN SECTION 12, T 83 N, R 39 W OF  
THE 5TH P.M., CRAWFORD COUNTY, IOWA.  
PREVIOUSLY RECORDED IN BOOK \_\_\_\_\_, PAGE \_\_\_\_\_, OTHER \_\_\_\_\_

#### MONUMENT DESCRIPTION AND REMARKS

NE CORNER SW1/4 SE1/4 - SET 5/8" DIA. X 18" IRON PIN  
W/ORANGE CAP #14709 3" DEEP.  
RESET FROM PREVIOUS TIES.



#### PLAN VIEW SHOWING RELATIVE LOCATION OF MONUMENT AND REFERENCE POINTS.

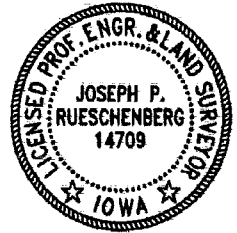


DISTANCES PLUMB CHAINED  
NW CORNER SW1/4 SE1/4  
SECTION 12-83-39

I HEREBY CERTIFY THAT THIS LAND SURVEYING DOCUMENT WAS PREPARED  
AND THE RELATED SURVEY WORK WAS PERFORMED BY ME OR UNDER MY  
DIRECT PERSONAL SUPERVISION AND THAT I AM A DULY LICENSED LAND  
SURVEYOR UNDER THE LAWS OF THE STATE OF IOWA.

*Joseph P. Rueschenberg* 1-22-2015  
JOSEPH P. RUESCHENBERG DATE

IA LICENSE NO. 14709 EXP. DATE DECEMBER 31, 2016



SE PROJECT NO. 20115  
DRAWN BY: LLL