



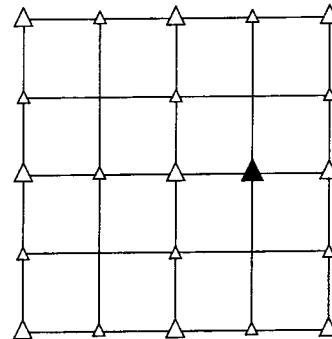
PREPARED BY - TERENCE E. CRAWFORD - SUNDQUIST ENGINEERING - 120 S. MAIN, DENISON, IOWA 51442 - PHONE (712) 263-8118

UNITED STATES PUBLIC LAND SURVEY CORNER CERTIFICATE OF

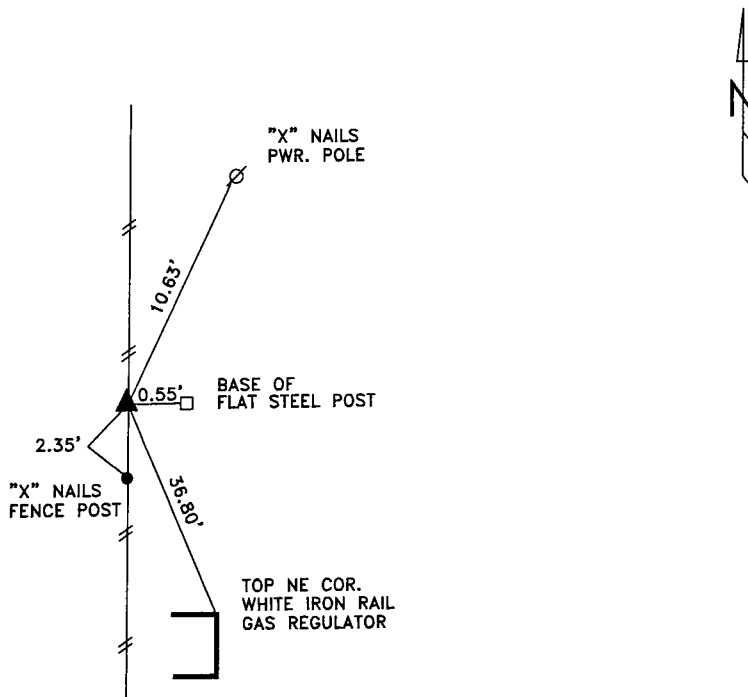
LAND SURVEY MONUMENT SITUATED IN SECTION 12, T 83 N, R 39 W OF
THE 5TH P.M., CRAWFORD COUNTY, IOWA.
PREVIOUSLY RECORDED IN BOOK _____, PAGE _____, OTHER _____

MONUMENT DESCRIPTION AND REMARKS

NE CORNER NW1/4 SE1/4 - SET 5/8" DIA. X 18" IRON PIN
W/YELLOW CAP #8893 UP 0.2', SET
FROM INFORMATION ON IDOT R-O-W
PLAT.



PLAN VIEW SHOWING RELATIVE LOCATION OF MONUMENT AND REFERENCE POINTS.

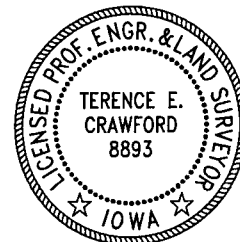


DISTANCES SLOPE CHAINED

NE CORNER NW1/4 SE1/4 SECTION 12-83-39

I HEREBY CERTIFY THAT THIS LAND SURVEYING DOCUMENT WAS PREPARED
AND THE RELATED SURVEY WORK WAS PERFORMED BY ME OR UNDER
MY DIRECT SUPERVISION AND THAT I AM A DULY LICENSED LAND
SURVEYOR UNDER THE LAWS OF THE STATE OF IOWA.

Terence E. Crawford MAR 15 2005
TERENCE E. CRAWFORD DATE
IA LICENSE NO. 8893 EXP. DATE DECEMBER 31, 2005



SE PROJECT NO. 21005
DRAWN BY: LLL