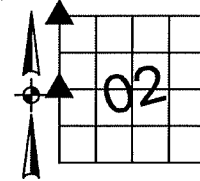


Denise Meeves RECORDER
 Crawford County, Iowa
 Instr. Number: 2020-0916
 Recorded: 5/7/2020 at 9:48:21.0 AM
 Pages 1
 County Recording Fee: \$7.00
 Iowa E-Filing Fee: \$3.13
 Combined Fee: \$10.13
 Revenue Tax:

PREPARED BY AND RETURN TO: MIKE SCHULTE, SCHULTE SURVEYING, INC., 2003 390TH STREET, WESTSIDE, IA 51467 (712) 790-3489

UNITED STATES PUBLIC LAND SURVEY CORNER CERTIFICATE OF
 LAND SURVEY MONUMENTS SITUATED IN SECTION 02, TOWNSHIP 84 NORTH, RANGE 41 WEST, OF THE FIFTH
 PRINCIPAL MERIDIAN, CRAWFORD COUNTY, IOWA. PREVIOUSLY RECORDED IN SEE BELOW IN COUNTY
 RECORDER'S OFFICE. (book, page instrument number)

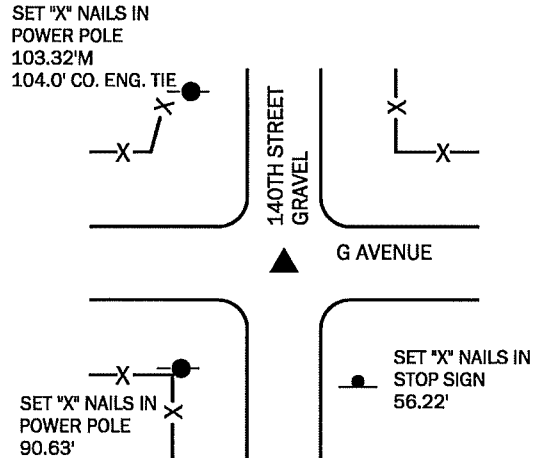
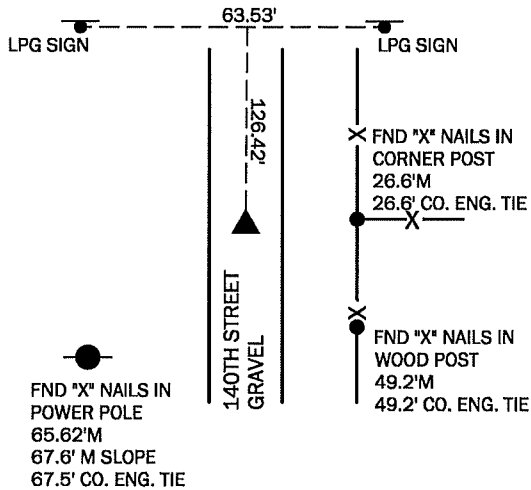


WEST 1/4 CORNER

SET 5/8" REBAR WITH YPC #17979
 N=7280291.64 E=16537738.53 EL=1348.57
 USED A METAL LOCATOR, HEARD NOTHING. USED COUNTY
 ENGINEER'S TIES AND CALCULATED CORNER POSITION,
 DUG 1'X1'X1' HOLE TO BLUE CLAY LINE, FOUND NOTHING.
 DIRT ROAD HAS BEEN CUT AWAY A LOT, COULD NOT FIND
 CONCRETE MONUMENT OR OAK STAKE.
 THIS CORNER CERTIFICATE IS BEING FILED BECAUSE
 THE CORNER MONUMENT HAS BEEN REPLACED.

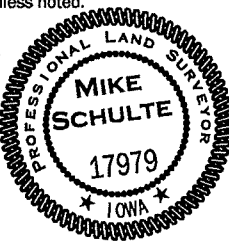
NORTHWEST CORNER

FND 5/8" REBAR 10" DEEP
 N=7283019.12 E=16537771.75 EL=1298.44
 USED A METAL LOCATOR AND COUNTY ENGINEER'S TIES TO
 FIND CORNER MONUMENT AS DESCRIBED IN COUNTY
 ENGINEER'S TIES. ACCEPTED MONUMENT.
 THIS CORNER CERTIFICATE IS BEING FILED BECAUSE
 THE CORNER DID NOT HAVE 3 REMAINING TIES OF RECORD.



*All distances are measured horizontally unless noted.
 I HEREBY CERTIFY THAT THIS LAND SURVEYING DOCUMENT WAS
 PREPARED BY ME OR UNDER MY DIRECT PERSONAL SUPERVISION AND
 THAT I AM A DULY LICENSED PROFESSIONAL LAND SURVEYOR UNDER
 THE LAWS OF THE STATE OF IOWA.

Mike Schulte
 MIKE SCHULTE
 LICENSE NUMBER: 17979
 LICENSE RENEWAL DATE IS DECEMBER 31, 2021
 PAGES COVERED BY THIS SEAL: 1 OF 1
 DATE: 2020/05/08



LIST CORNERS TO BE INDEXED

CORNER	SECTION	TWP	RANGE
NW	02	84	41
NE	03	84	41
SE	34	85	41
SW	35	85	41
W1/4	02	84	41
E1/4	03	84	41

BASIS OF BEARING
 IaRCS ZONE 6 - US SURVEY FEET
 IaRTN DERIVED - NAD83(2011) EPOCH 2010.00

SCHULTE SURVEYING, INC.

DRAWN BY: MLS
 PROJ NUMBER: 20-023