

2003 OCT -8 PM 12:24

2003-3916

DENISE MEEVES, RECORDER
 Denise Meeves
 FEE # 11.00

Mary Gitten, Deputy

L and H Engineers & Surveyors, 228 West Main Street, Cherokee, Iowa 51012. Tel. (712) 225-0560

UNITED STATES PUBLIC LAND SURVEY CORNER CERTIFICATE
 OF

LAND SURVEY MONUMENTS SITUATED IN SECTION 36, TOWNSHIP 84 NORTH, RANGE 41 WEST,
 OF THE 5th PRINCIPAL MERIDIAN, CRAWFORD COUNTY, IOWA.

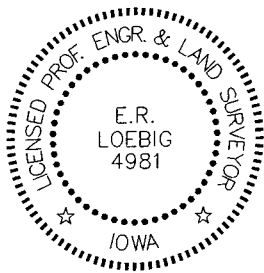
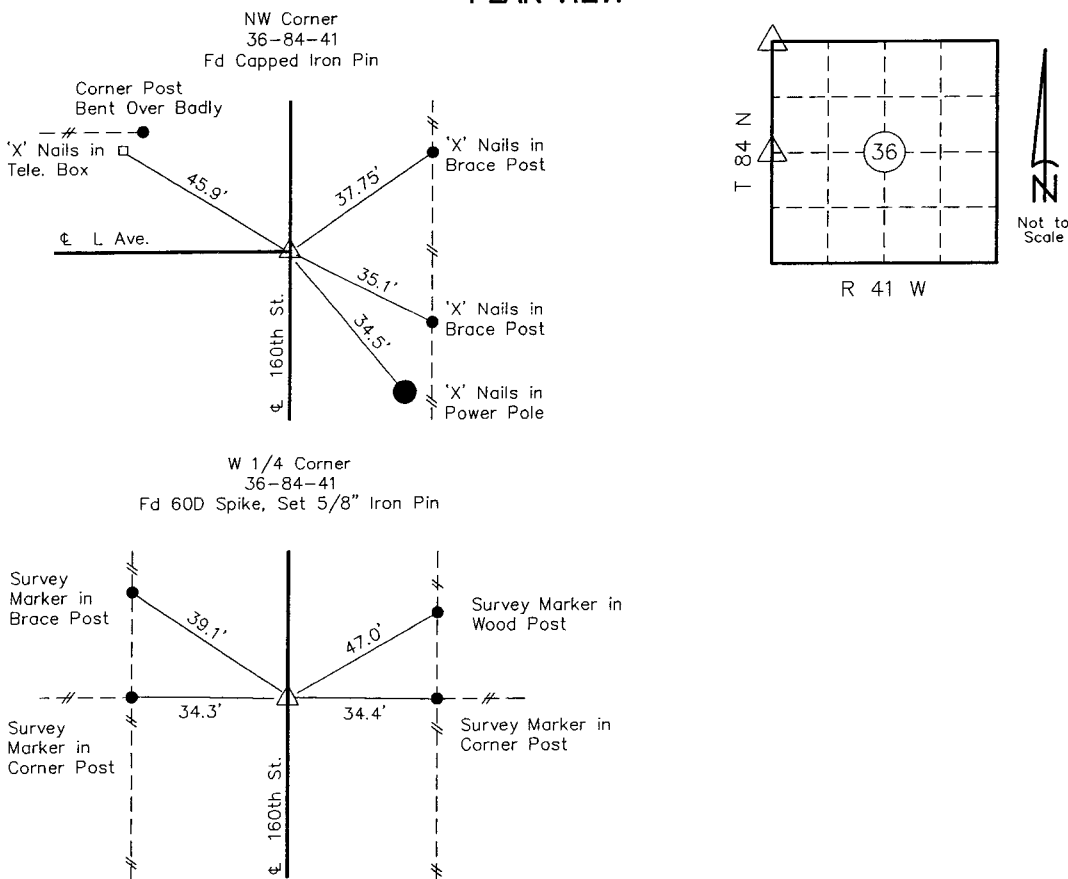
PREVIOUSLY RECORDED IN BOOK: _____, PAGE: _____

MONUMENT DESCRIPTION AND REMARKS: _____

- 1). NW Corner 36-84-41; Fd Capped Iron Pin
- 2). W 1/4 Corner 36-84-41; Fd 60D Spike, Set 5/8" Rebar

Stone ties were obtained from Crawford County Engineer's Office, were field verified and retied (using slope distance).

PLAN-VIEW



I hereby certify that this land surveying document was prepared and the related survey work was performed by me or under my direct personal supervision and that I am a duly licensed Land Surveyor under the laws of the State of Iowa.

E.R. Loebig 10-02-03
 E.R. Loebig, Land Surveyor Date
 License number: 4981
 My registration renewal date is December 31, 2003
 Pages or sheets covered by this seal: one (1)

Corners to be Indexed

Corner	Section	Twp.	Range
NW Cor.	36	84	41
W 1/4 Cor.	36	84	41

L and H Engineers & Surveyors
 228 West Main Street
 Cherokee, Iowa 51012
 Tel. (712) 225-0560
 Fax (712) 225-6017