

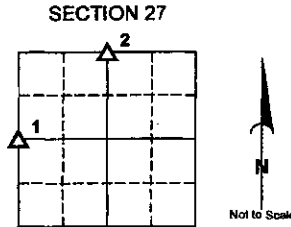
INDEXED *MEMO*
 FILED
 RECORDED
 5/2/2008

REC018766
 Crawford County Recorder
 Denise Meeves
Fee Book 2008-1398
 05/12/2008 @02:52PM
 PLC PLAT CORNER CER # Pages: 1
 Book: Page: # Pages: 1
 Total Fees: \$7.00

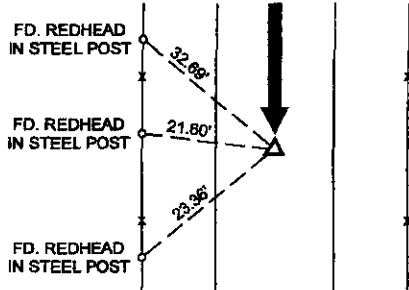
PREPARED BY AND RETURN TO: JEFFREY M. KRUEGER P.L.S., KUEHL AND PAYER LTD., 2002 WEST MAIN ST., SAC CITY, IA 50583 PH. (712)662-7859

UNITED STATES PUBLIC LAND SURVEY CORNER CERTIFICATE OF

LAND SURVEY MONUMENTS SITUATED IN SECTION 27
 TOWNSHIP 84 NORTH, RANGE 41 WEST
 OF THE 5TH P.M., CRAWFORD COUNTY, IOWA.



1.) W 1/4 CORNER



NOTE:
 ALL DISTANCES ON THIS TIE ARE
 SLOPE MEASUREMENTS

1.) W 1/4 CORNER 27-84-41 CRAWFORD COUNTY, IOWA:

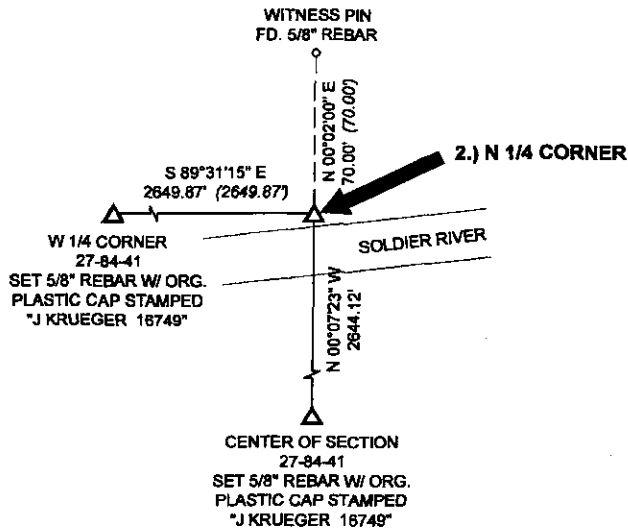
SEARCHED WITH METAL DETECTOR FOR 5/8" CAPPED REBAR SET IN INSTRUMENT NO. 99-0484 IN THE CRAWFORD COUNTY RECORDER'S OFFICE - UNABLE TO LOCATE IT. USED REFERENCE TIES FROM SAID INSTRUMENT TO SET 5/8" REBAR WITH ORANGE PLASTIC CAP STAMPED "J KRUEGER 16749", 12" DEEP.

THIS CERTIFICATE IS BEING PREPARED BECAUSE: THE CORNER MONUMENT HAS BEEN REPLACED OR MODIFIED.

2.) N 1/4 CORNER 27-84-41 CRAWFORD COUNTY, IOWA:

FOUND WITNESS 5/8" REBAR, FLUSH WITH GROUND, 70.00 FEET NORTH OF CORNER AS SHOWN ON INSTRUMENT NO. 94-1784 AND INSTRUMENT NO. 84-2241 IN THE CRAWFORD COUNTY RECORDER'S OFFICE. USED INFORMATION FROM SAID INSTRUMENTS TO SET 5/8" REBAR WITH ORANGE PLASTIC CAP STAMPED "J KRUEGER 16749", FLUSH WITH GROUND, ON NORTH SIDE OF RIVER BANK.

THIS CERTIFICATE IS BEING PREPARED BECAUSE: THE CORNER MONUMENT HAS BEEN REPLACED OR MODIFIED.



I hereby certify that this land surveying document was prepared and the related survey work was performed by me or under my direct personal supervision and that I am a duly licensed Land Surveyor under the laws of the State of Iowa.

Jeffrey M. Krueger
 Jeffrey M. Krueger
 License Number 16749
 My license renewal date is December 31, 2008
 Pages covered by this seal 1
 Date: 5-2-2008

List Corners to be Indexed

Corners	Section	Township	Range
1) W 1/4	27	84	41
2) N 1/4	27	84	41

PN: 080507
 DRAWN: JMK