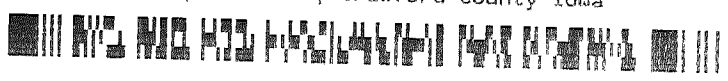


INDEXED km
 FOLLOW UP km
 PROOFED km
 SCANNED km

Instrument #: 2016-1566
 07/28/2016 11:11:06 AM Total Pages: 1
 PLC PLAT CORNER CER
 Recording Fee: \$0.00 Transfer Tax: \$0
 Denise Meeves, Recorder, Crawford County Iowa



PREPARED BY: PAUL ASSMAN-CRAWFORD COUNTY ENGINEER'S OFFICE-COURTHOUSE-DENISON, IA.-712-263-2449

UNITED STATES PUBLIC LAND SURVEY CORNER CERTIFICATE OF

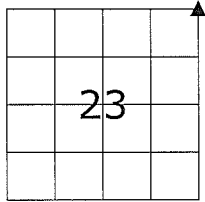
LAND SURVEY MONUMENT SITUATED IN CHARTER OAK TOWNSHIP, THE NORTHEAST CORNER OF SECTION 23,
T-84N, R-41W OF THE FIFTH P.M. CRAWFORD COUNTY, IOWA.

PREVIOUSLY RECORDED AS NO. 97-2682

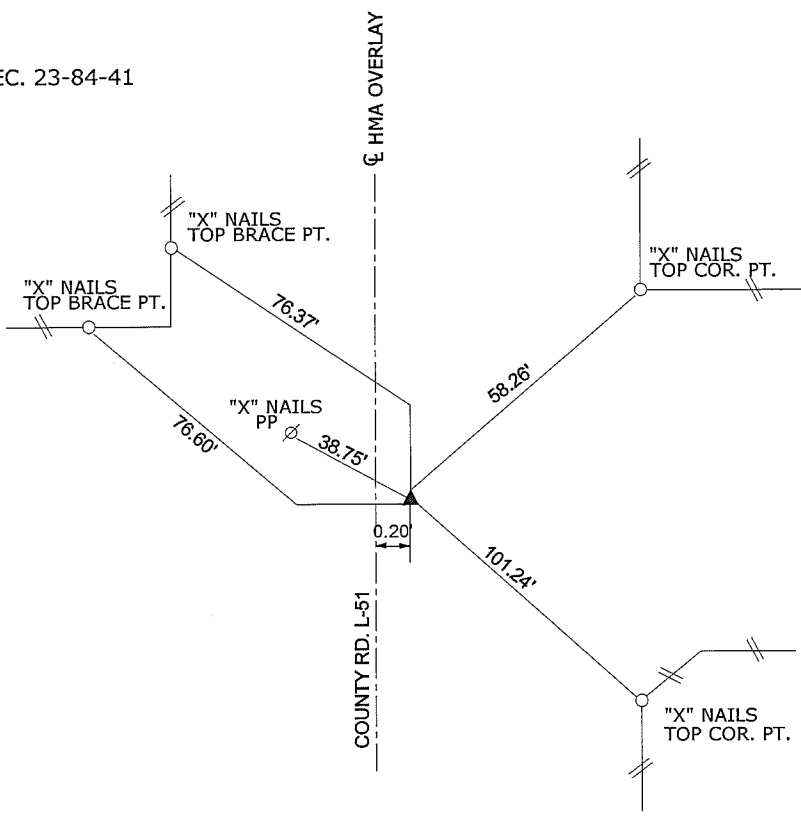
MONUMENT DESCRIPTION AND REMARKS

NORTHEAST CORNER SEC. 23-84-41

FOUND BOLT FLUSH WITH ASHPALT USING PREVIOUS TIES. COMPLETED HMA OVERLAY, RESET AND RETIED CORNER - SET CARRIAGE BOLT 0.05' DEEP



NORTHEAST CORNER SEC. 23-84-41



ALL DISTANCES ARE PLUMB CHAINED

CERTIFICATION:

I HEREBY CERTIFY THAT THIS LAND SURVEYING DOCUMENT WAS PREPARED AND THE RELATED SURVEY WORK WAS PERFORMED BY ME OR UNDER MY DIRECT PERSONAL SUPERVISION AND THAT I AM A DULY LICENSED LAND SURVEYOR UNDER THE LAWS OF THE STATE OF IOWA.

	7/27/16
Signature	Date of Survey
PAUL J. ASSMAN	12-31-16
Typed Name	License Renewal Date
11982	
L.S. No.	

