



UNITED STATES PUBLIC LAND SURVEY CORNER CERTIFICATE OF



Land Survey Monuments Situated in Section 23, Township 84N, Range 41W, Of The Fifth Principal Meridian, Crawford County, Iowa.

FILED DENISON, IOWA CRAWFORD COUNTY

Monument Description and Remarks:

95 MAY 19 AM 9:43

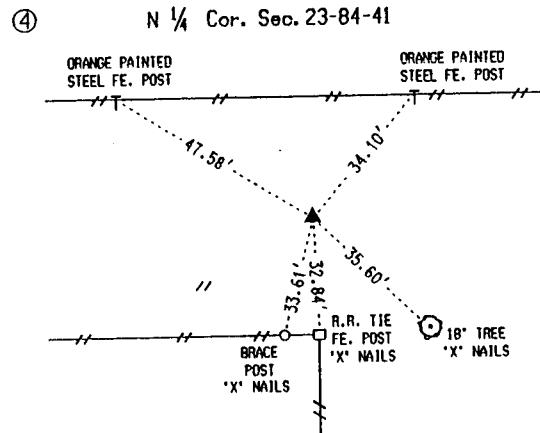
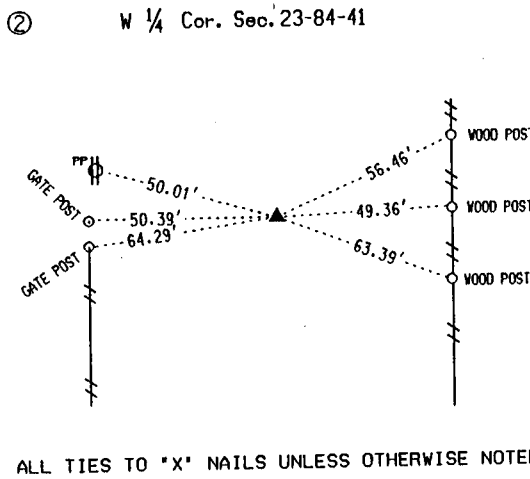
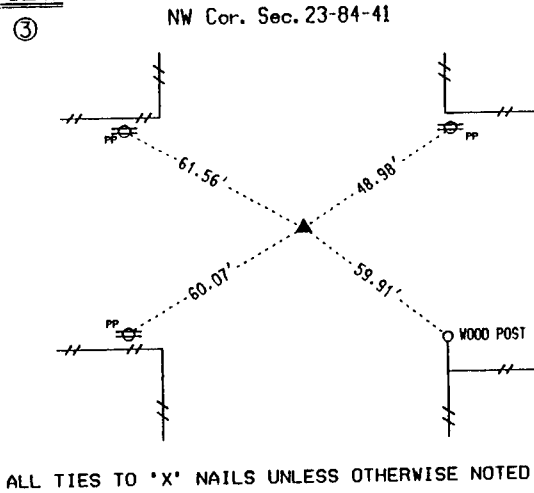
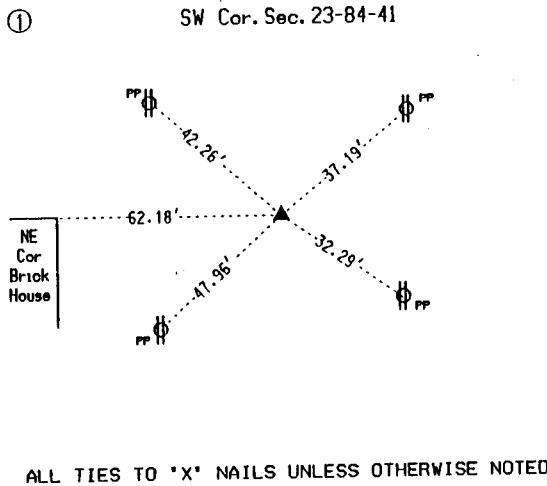
- ① SW Cor. Sec. 23-84-41, Found Bridge Spike
- ② W 1/4 Cor. Sec. 23-84-41, Found 5/8" Re-Rod, 6 inches deep, on line with line fence west
- ③ NW Cor. Sec. 23-84-41, Found 1 1/2" Re-Rod, 6 inches deep.
- ④ N 1/4 Cor. Sec. 23-84-41, Found W.P.A. Concrete Monument, 6 inches deep with Iron.

INST. NO. 95-1270 DENISE HEEVES, RECORDER

FEE \$0.00

INDEXED MFE FOLLOW UP MFE PROCEED

PLAN - VIEW



I hereby certify that the survey work was completed and this land surveying document was prepared by me or under my direct personal supervision and that I am a duly registered Land Surveyor under the laws of the state of Iowa.

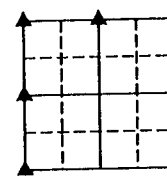
Signature: David L. Wilberding DAVID L. WILBERDING

Reg. No. 10315

Date: 5-18-95



My Registration Renewal Date is December 31, 1995



List Corners to be Indexed

Corner	Section	Twp	Range
① SW Cor	23	84N	41W
② W 1/4 Cor	23	84N	41W
③ NW Cor	23	84N	41W
④ N 1/4 Cor	23	84N	41W