

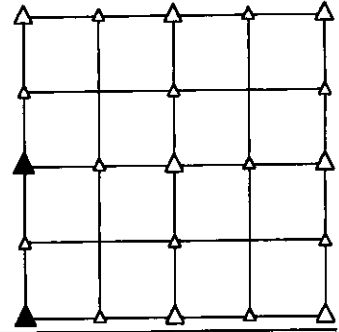
PREPARED BY - TERENCE E. CRAWFORD - SUNDQUIST ENGINEERING - 120 S. MAIN, DENISON, IOWA 51442 - PHONE (712) 263-8118

**UNITED STATES PUBLIC LAND SURVEY CORNER CERTIFICATE
 OF**

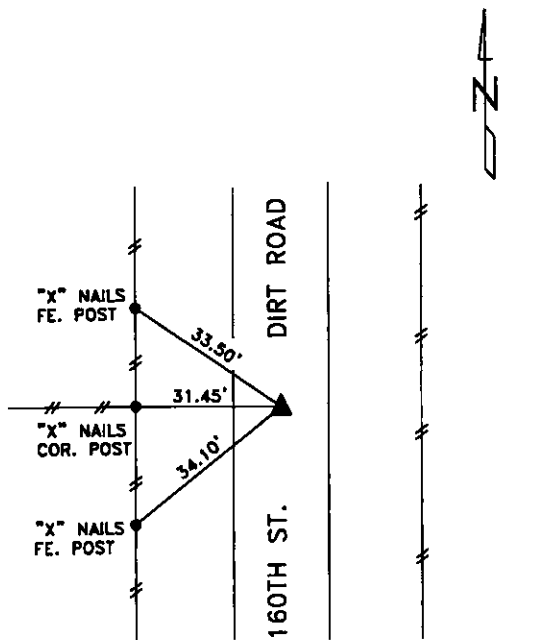
LAND SURVEY MONUMENT SITUATED IN SECTION 31, T 85 N, R 40 W OF
 THE 5TH P.M., CRAWFORD COUNTY, IOWA.
 PREVIOUSLY RECORDED IN BOOK _____, PAGE _____, OTHER _____

MONUMENT DESCRIPTION AND REMARKS

W1/4 CORNER - SET 5/8" DIA. X 18" IRON PIN W/YELLOW CAP #8893 0.4' DEEP, SET ON LINE BETWEEN NW COR. & SW COR. OF SEC. 31 & ON LINE W/OLD FENCE WEST.
 SW CORNER - FOUND 5/8" DIA. IRON PIN 0.3' DEEP.

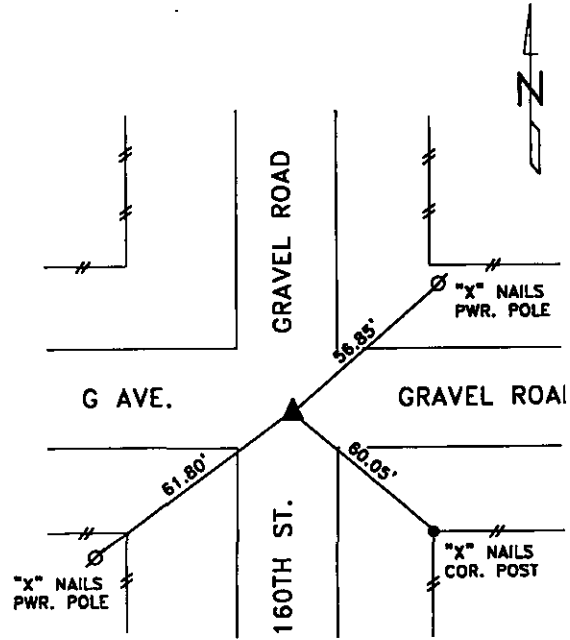


PLAN VIEW SHOWING RELATIVE LOCATION OF MONUMENT AND REFERENCE POINTS.



DISTANCES PLUMB CHAINED

W1/4 CORNER SECTION 31-85-40



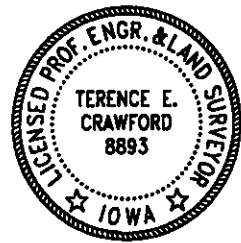
DISTANCES PLUMB CHAINED

SW CORNER SECTION 31-85-40

I HEREBY CERTIFY THAT THIS LAND SURVEYING DOCUMENT WAS PREPARED AND THE RELATED SURVEY WORK WAS PERFORMED BY ME OR UNDER MY DIRECT PERSONAL SUPERVISION AND THAT I AM A DULY LICENSED LAND SURVEYOR UNDER THE LAWS OF THE STATE OF IOWA.

Terence E. Crawford 10-11-11
 TERENCE E. CRAWFORD DATE

IA LICENSE NO. 8893 EXP. DATE DECEMBER 31, 2011



SE PROJECT NO. 24211
 DRAWN BY: LLL